



ADVANCED  
TORQUE  
TECHNOLOGY



INTRODUCING

**B-RAD X**

3,000/4,000-M



RAD PNEUMATIC



E-RAD BLU



B-RAD XTREME



B-RAD BATTERY



V-RAD ELECTRIC



AUDIT EQUIPMENT

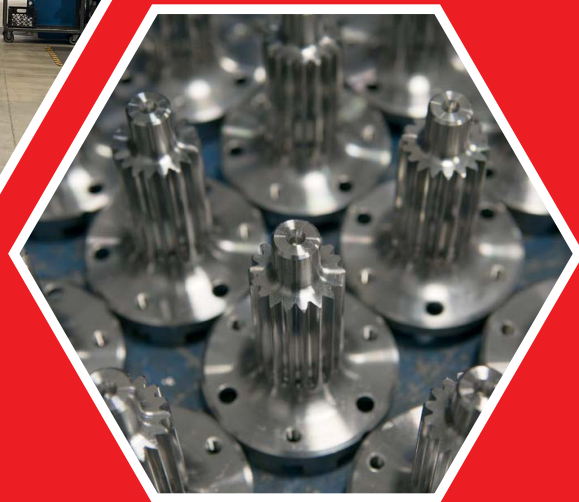
**2025** | **PRODUCT CATALOGUE**

# CONTENTS



<b>OUR STORY</b>	<b>4</b>
Company Profile	6
What is RAD Torque Systems?	7
Our Manufacturing Facility	8
Custom Tools	9
ISO 17025 Accredited Calibration Lab	9
Finding The Right Tool	10
 <b>RAD PNEUMATIC SERIES</b>	 <b>12</b>
RAD Single Speed	14
RAD High Speed	16
RAD Wheel Nut Bolting & OTR Mining	18
 <b>E-RAD BLU SERIES</b>	 <b>20</b>
E-RAD BLU	22
E-RAD BLU-S	24
 <b>B-RAD BATTERY SERIES</b>	 <b>26</b>
B-RAD Xtreme	28
B-RAD Select	30
B-RAD Select Offset	32
DIGITAL B-RAD	34
 <b>V-RAD ELECTRIC SERIES</b>	 <b>36</b>
V-RAD Select	38
 <b>AUDIT EQUIPMENT</b>	 <b>40</b>
B-RAD S	42
RAD Smart Sockets™	44
RAD Calibration Systems	46
 <b>ACCESSORIES</b>	 <b>48</b>
RAD Safety Accessories	50
Nose Extensions	50
Reaction Arms	51
Regulator and Tool Holder	51
 <b>RAD LIMITED WARRANTY</b>	 <b>53</b>

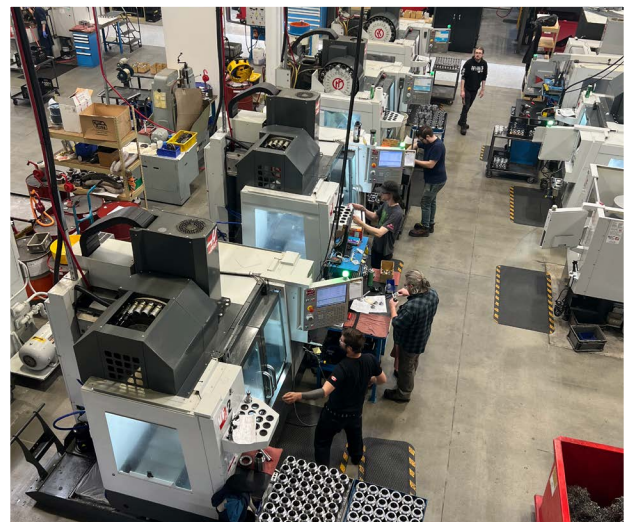
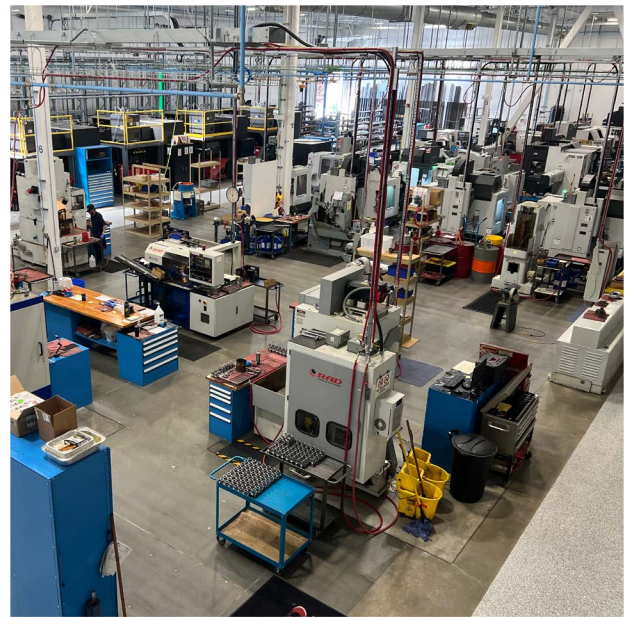
# OUR STORY



# Company Profile

At RAD Torque Systems we manufacture extreme torque equipment, which includes pneumatic, battery powered, and electronic pistol grip torque wrenches. For 30 years, we have carefully designed and developed our tools in-house from our Canadian manufacturing facility to ensure quality from conception through to production. We believe this gives us greater control over every piece that goes into our product. That's why a RAD Torque tool is more durable, accurate and efficient than the competition.

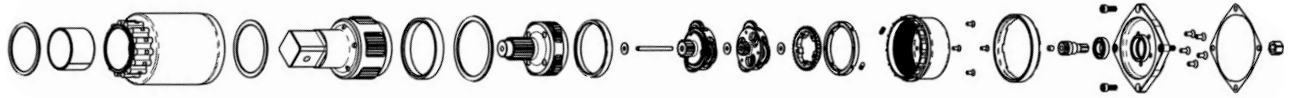
Together with our parent company, New World Technologies Inc., we work to be a leader in the industry – always using latest technology to achieve the highest level of innovation, quality, and performance, which has resulted in multiple patents.





# What is RAD Torque Systems?

RAD Torque Systems manufactures “planetary” torque wrenches. The name “RAD” is taken from the method used to assemble the gearbox known as “RADial” planetary gear reduction. RAD Torque tools are best known for the gearbox, which offers the best power-to-weight ratio on the market. That’s why a RAD Torque tool is lighter, stronger, and faster.



Exploded view of RAD gearbox



**The best power-to-weight  
ratio on the market!**



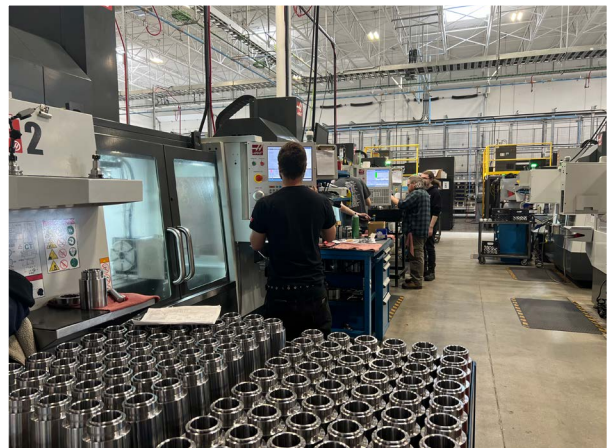
# Our Manufacturing Facility

In 2022, RAD Torque Systems moved into a state-of-the-art, 60,000 sq. ft. manufacturing facility. In addition to this facility, RAD Torque Systems recently expanded its operations with a dedicated WaterJet and Welding center located in a separate building. To meet growing demand, the company has invested millions of dollars in advanced CNC machines and cutting-edge manufacturing technology.

## Our Capabilities Include:

- 2 Fastems Systems
- 8 Okuma Horizontal Mills (5-axis)
- 12 Haas Vertical Mills (4-axis)
- 5 Multi-Axis Lathes
- 13 Lathes
- 2 Milling Machines
- 2 Water Jets
- 3 Shapers
- 4 Hobbing Machines
- 5 Shaping Machines

RAD Torque Systems is also supported by a team of highly skilled mechanical, electrical, and software engineers, who play a vital role in the innovation and development of our product lines.





# Custom Tools

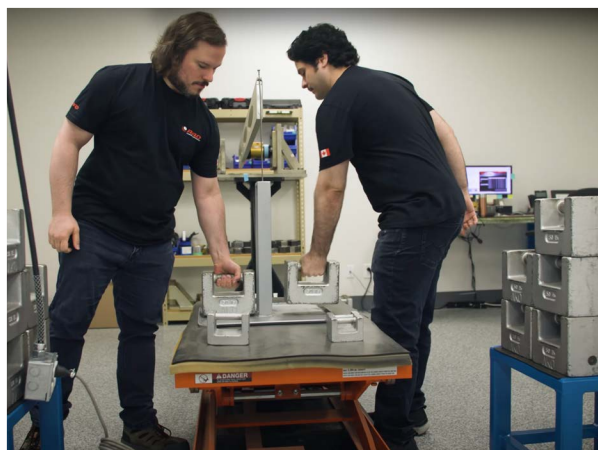
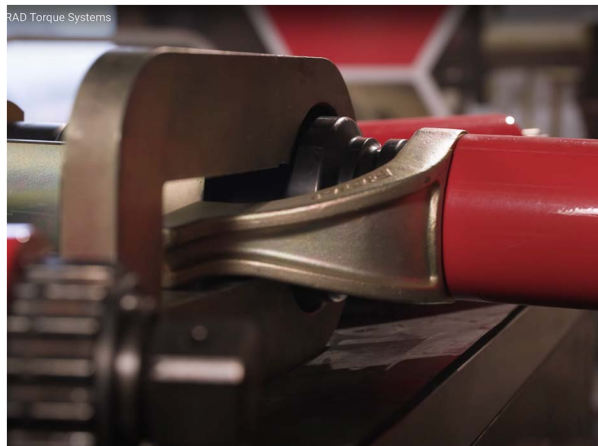
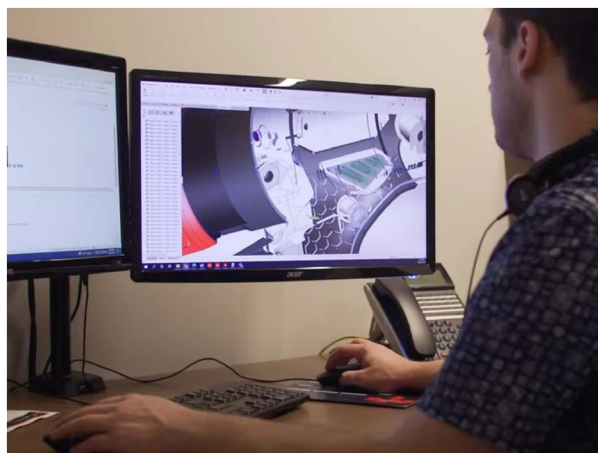
Not all bolts are the same. That's why RAD Torque Systems will manufacture custom reaction arms and custom tools to fit most challenging bolting applications.

Our team of mechanical engineers work closely with you to understand your specific requirements and create tools that are tailored to your needs. By working with RAD Torque to develop a customized solution to your torque challenges you can ensure you are getting equipment that will perform efficiently and effectively – improving the productivity and quality of your work.

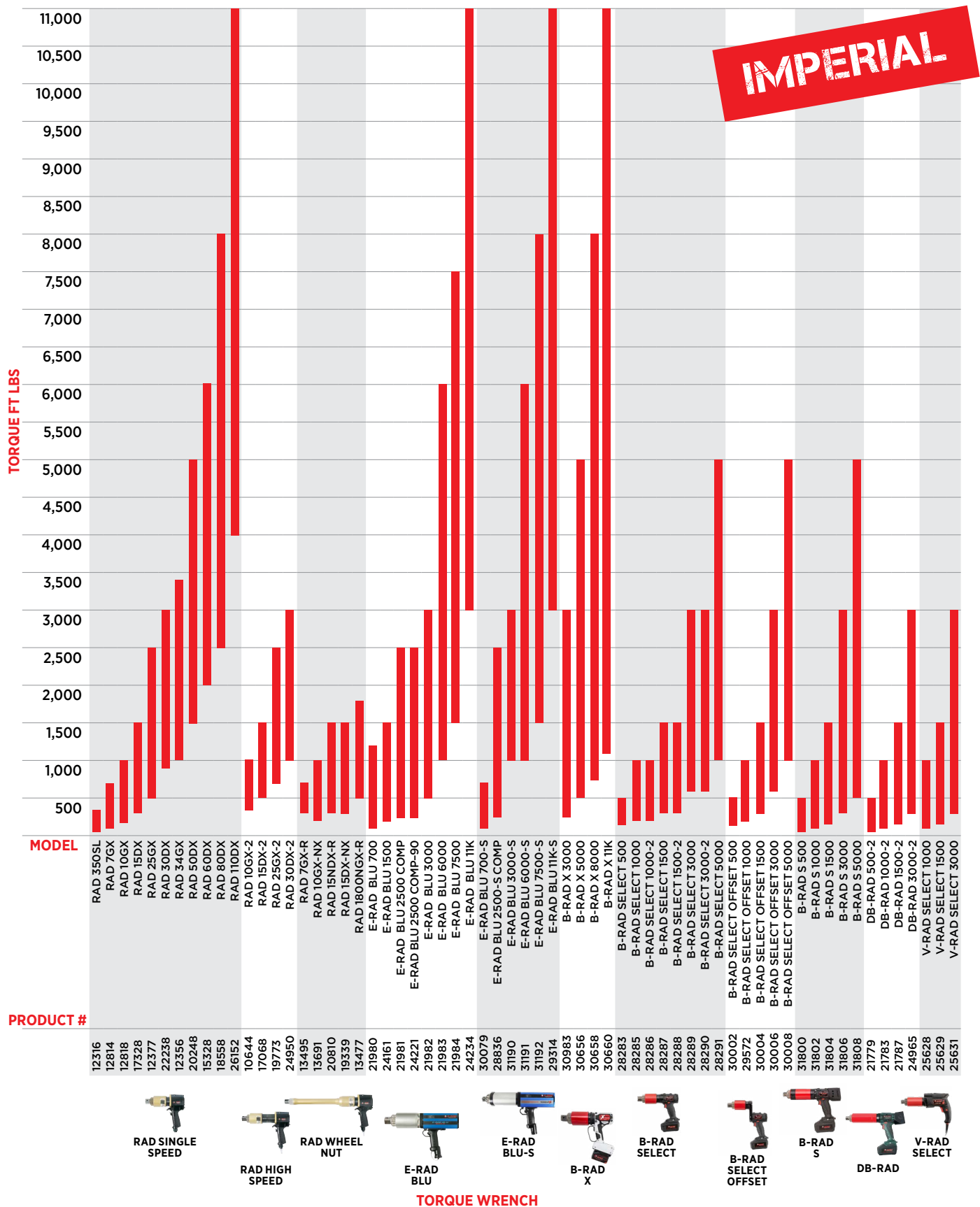
Customizing tools to fit your specific needs also creates a safer work environment.

# ISO 17025 Accredited Calibration Lab

RAD Torque Systems has an accredited calibration laboratory to ensure maximum quality and calibration traceability (Cert # L2325 Calibration). Our calibration lab is committed to the professional practice and to the quality and impartiality of its calibration service. Our calibrations are performed only by fully trained and qualified technicians using calibrated equipment traceable to national standards.

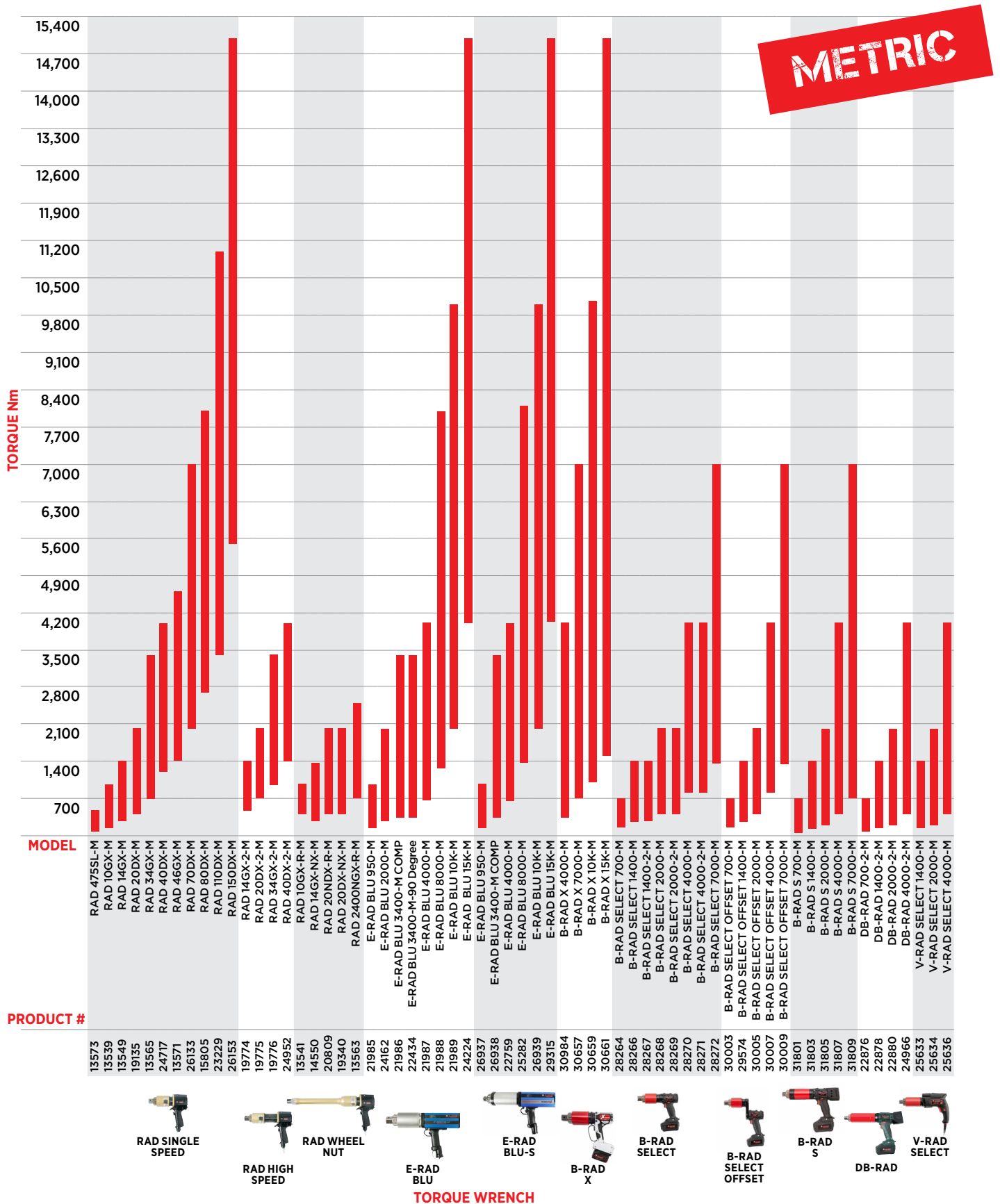


# Find The Right Tool





# With The Right Torque



# RAD PNEUMATIC

## SERIES

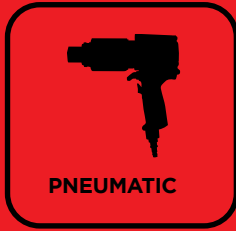
## PRECISION DESIGN LIGHTWEIGHT + ERGONOMIC

RAD Torque Pneumatic Series of air tools provides uncompromised power and durability in a pistol grip wrench that can withstand the toughest environments. RAD Pneumatic tools come in a wide range of sizes for any job – big or small.

RAD Pneumatic tools come with planetary gear boxes, which mean the torque wrenches are vibration free and have the accuracy to prevent accidental under-and over-tightening.

### INCLUDED ACCESSORIES

- Reaction arm & retaining ring
- Tool holder with FRL unit, 10 ft. / 3.6 m hose and fittings
- Safety instruction and operator's manual
- Calibrated to ISO 17025 standards



ELECTRONIC



BATTERY



ELECTRIC



AUDIT EQUIPMENT



# RAD SINGLE SPEED





# Extreme duty torque wrenches for heavy duty applications

PNEUMATIC



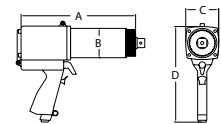
30 years of experience in gearbox engineering and design has brought about our latest generation in planetary gearboxes – RAD Single Speed. Designed for extreme duty use in a variety of industries worldwide, RAD Single Speed torque wrenches offer:

## FEATURES

- The ultimate in power-to-weight ratio
- Wide torque range to suit multiple applications
- Unmatched reliability delivered by one of the most advanced engineered gear boxes on the market
- Controlled torque - accuracy of +/- 4% and repeatability of +/- 2%

## FRL UNIT

- Low weight tool holder made from high-density polypropylene
- Includes pressure gauge, filter, regulator and oiler



## IMPERIAL

PART NUMBER	TOOL MODEL	DRIVE SIZE	TORQUE (ft. lbs.) LOW HIGH	RPM	WEIGHT (lbs.)	NOISE LEVEL	DIMENSION A	DIMENSION B	DIMENSION C	DIMENSION D
12316	RAD 350SL	0.75"	50 350	65	6	80 db	6.6"	2.4"	2.75"	8.75"
12814	RAD 7GX	0.75"	100 700	30	8	80 db	9.0"	2.5"	2.75"	9.0"
12818	RAD 10GX	0.75"	200 1000	20	8	80 db	8.15"	2.5"	2.75"	8.07"
17328	RAD 15DX	1.0"	300 1500	10	8.6	80 db	8.0"	2.7"	2.75"	8.1"
12377	RAD 25GX	1.0"	500 2500	9	13.5	85 db	9.7"	3.1"	3.3"	9.5"
22238	RAD 30DX	1.0"	900 3000	8	14.8	85 db	10"	3.2"	3.3"	9.5"
12356	RAD 34GX*	1.0"	1000 3400	12	20	85 db	12.5"	3.4"	3.7"	10.8"
20248	RAD 50DX	1.5"	1500 5000	6.7	23.5	85 db	11.25"	3.75"	3.75"	10.4"
15328	RAD 60DX	1.5"	2000 6000	6.6	27.6	85 db	13.7"	4.0"	4.0"	10.9"
18558	RAD 80DX	1.5"	2500 8000	4	30.5	85 db	12.15"	4.25"	4.25"	10.65"
26152	RAD 110DX	1.5"	4000 11000	3	42	85 db	13.9"	5.0"	5.0"	11.07"

## METRIC

PART NUMBER	TOOL MODEL	DRIVE SIZE	TORQUE (Nm) LOW HIGH	RPM	WEIGHT (Kg)	NOISE LEVEL	DIMENSION A (mm)	DIMENSION B (mm)	DIMENSION C (mm)	DIMENSION D (mm)
13573	RAD 475SL-M	0.75"	70 475	65	2.7	80 db	167	61	70	222
13539	RAD 10GX-M	0.75"	150 950	30	3.6	80 db	228	63	70	228
13549	RAD 14GX-M	0.75"	275 1400	20	3.8	80 db	228	63	70	228
19135	RAD 20DX-M	1.0"	400 2000	10	4.0	80 db	203	69	70	228
13565	RAD 34GX-M	1.0"	700 3400	9	6.1	85 db	240	78	83	241
24717	RAD 40DX-M	1.0"	1200 4000	8	6.7	85 db	254	81	83	241
13571	RAD 46GX-M*	1.0"	1400 4600	12	9.0	85 db	317	86	94	274
26133	RAD 70DX-M	1.5"	2000 7000	6.7	10.6	85 db	285	95	95	264
15805	RAD 80DX-M	1.5"	2700 8000	6.6	12.4	85 db	348	101	101	276
23229	RAD 110DX-M	1.5"	3400 11000	4	13.7	85 db	308	108	108	270
26153	RAD 150DX-M	1.5"	5500 15000	3	18.9	85 db	353	127	127	281

Accuracy of +/-4%, Repeatability of +/-2% | \*Also available in a 1.5" square drive.

# RAD HIGH SPEED



# Extreme duty torque wrenches with high RPM productivity

PNEUMATIC



Looking for high RPM productivity? RAD High Speed torque wrenches incorporate a precision-engineered, high-speed gearbox designed for faster run down and quick reaction point positioning on time sensitive bolting applications.

The two-speed models feature a unique fully automatic gearbox design, eliminating the time-consuming switch between high and low speed gear.

## FEATURES

- The ultimate in power-to-weight ratio
- Wide torque range to suit multiple applications
- Unmatched reliability delivered by one of the most advanced engineered gear boxes on the market
- Controlled torque accuracy of +/- 4% and repeatability of +/- 2%

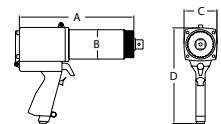
## FRL UNIT

- Low weight tool holder made from high-density polypropylene
- Includes pressure gauge, filter, regulator and oiler



## IMPERIAL

PART NUMBER	TOOL MODEL	DRIVE SIZE	TORQUE (ft. lbs.) LOW HIGH	RPM	WEIGHT (lbs.)	NOISE LEVEL	DIMENSION A	DIMENSION B	DIMENSION C	DIMENSION D
10644	RAD 10GX-2	0.75"	350 1000	85	9.9	80 db	10.3"	2.5"	2.75"	8.1"
17068	RAD 15DX-2	1.0"	500 1500	50	10.5	80 db	9.9"	2.7"	2.75"	8.1"
19773	RAD 25GX-2	1.0"	700 2500	44	16.6	80 db	12.0"	3.1"	3.3"	10.0"
24950	RAD 30DX-2	1.0"	1000 3000	49	16.1	80 db	12.2"	3.2"	2.75"	9.5"



## METRIC

PART NUMBER	TOOL MODEL	DRIVE SIZE	TORQUE (Nm) LOW HIGH	RPM	WEIGHT (Kg)	NOISE LEVEL	DIMENSION A (mm)	DIMENSION B (mm)	DIMENSION C (mm)	DIMENSION D (mm)
19774	RAD 14GX-2-M	0.75"	475 1400	85	4.5	80 db	261	63	70	205
19775	RAD 20DX-2-M	1.0"	700 2000	50	4.7	80 db	251	68	70	205
19776	RAD 34GX-2-M	1.0"	950 3400	44	7.5	80 db	305	78	84	254
24952	RAD 40DX-2-M	1.0"	1400 4000	49	7.3	80 db	309	81	83	254

Accuracy of +/-4%, Repeatability of +/-2%

# RAD WHEEL NUT & OTR MINING





# Precision Wheel Nut Bolting for Mining

PNEUMATIC



RAD Wheel Nut Bolting & Off-The-Road (OTR) tools were designed with one job in mind – to secure wheel nuts on OTR mining trucks. This pneumatic torque wrench comes with a nose extension that is ideal for reaching wheel nut studs that are recessed and have tight clearances.

## FEATURES

- Removable custom reaction arms designed to fit virtually on any wheel configuration.
- Extended reaction point for safe and quick operation
- Accuracy to ensure correct tightened wheels.

## FRL UNIT

- Low weight tool holder made from high-density polypropylene
- Includes pressure gauge, filter, regulator and oiler

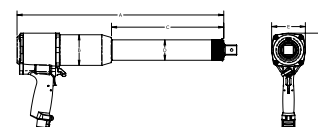


## NOSE EXTENSION (-R)

Developed exclusively for extreme duty maintenance of mining haul trucks from 50–400-ton capacities and front-end loaders. The extended nose allows safe access of virtually all wheel configurations found on today's heavy equipment.

## NOSE EXTENSION KIT (-NX)

Designed with flexibility in mind. Complete with 3 different reaction arms and a nose extension for hard-to-reach areas, the NX Kit is a “go anywhere” tool capable of a variety of applications but especially suitable for off-road construction equipment.



## IMPERIAL

PART NUMBER	TOOL MODEL	DRIVE SIZE	TORQUE (ft. lbs.) LOW HIGH	RPM	WEIGHT (lbs.)	NOISE LEVEL	DIMENSION A	DIMENSION B	DIMENSION C	DIMENSION D	DIMENSION E	DIMENSION F
13495	RAD 7GX-R	0.75"	300 700	115	12	80 db	13.61"	2.48"	3.06"	1.68"	2.75"	8.98"
13691	RAD 10GX-NX	0.75"	200 1000	20	8	80 db	20.4"	2.48"	9.55"	1.68"	2.75"	8.98"
20810	RAD 15NDX-R	1.0"	300 1500	10	16	80 db	20.19"	2.7"	12.1"	1.75"	2.75"	8.98"
19339	RAD 15DX-NX	1.0"	300 1500	10	8.6	80 db	20.2"	2.7"	9.77"	1.75"	2.75"	8.98"
13477	RAD 1800NGX-R	1.0"	500 1800	10	27.5	85 db	20.26"	3"	11"	2"	3.31"	9.53"

## METRIC

PART NUMBER	TOOL MODEL	DRIVE SIZE	TORQUE (Nm) LOW HIGH	RPM	WEIGHT (Kg)	NOISE LEVEL	DIMENSION A (mm)	DIMENSION B (mm)	DIMENSION C (mm)	DIMENSION D (mm)	DIMENSION E (mm)	DIMENSION F (mm)
13541	RAD 10GX-R-M	0.75"	400 1000	115	5.4	80 db	345	63	78	43	70	228
14550	RAD 14GX-NX-M	0.75"	275 1400	20	3.6	80 db	518	63	243	43	70	228
20809	RAD 20NDX-R-M	1.0"	400 2000	10	7.2	80 db	513	69	307	44	70	228
19340	RAD 20DX-NX-M	1.0"	400 2000	10	3.9	80 db	513	69	248	44	70	228
13563	RAD 2400NGX-R-M	1.0"	700 2400	10	12.4	85 db	515	76	279	51	84	242

Accuracy of +/-4%, Repeatability of +/-2%

# E-RAD BLU

**SERIES**

## ADVANCED ELECTRONICS HIGH DEGREE OF ACCURACY

When the wind industry needs bolts torqued, the tool of choice to get the job done is the E-RAD BLU. These electronic torque wrenches deliver continuous torque in an ergonomic, lightweight, design to complete the job in record time. With the E-RAD BLU users also can use different handles per controller case.

The E-RAD BLU-S combines all the technology in the E-RAD BLU but with transducer technology for even more accuracy.

### INCLUDED ACCESSORIES

- Reaction arm & retaining ring
- E-RAD tool handle
- E-RAD touch controller
- Single 15 ft. / 4.5 m cable
- Calibrated to ISO 17025



PNEUMATIC



ELECTRONIC



BATTERY



ELECTRIC



AUDIT EQUIPMENT



# E-RAD BLU



SHOWN WITH OPTIONAL  
MOUNTING ACCESSORY



90 DEGREE\*



OFFSET\*

\*Only available on certain models.

## CASE

Durable, light weight,  
shock proof. Designed  
to protect your  
RAD investment.



Bluetooth® is a registered trademark of Bluetooth SIG, Inc. and any use of such marks by New World Technologies Inc. is under license. Other trademarks and trade names are those of their respective owners.





# Ability to use different handles with controller case

E-RAD BLU precision torque wrench tools are designed to provide a high degree of accuracy ( $\pm 2.8\%$ ) and repeatability ( $\pm 2\%$ ). Using a patented gearbox design and the precision of an electric AC Servo motor, these tools deliver smooth continuous torque. Best of all, it's the most affordable system on the market.

## FEATURES

- Advanced data logging and tool management features
- Military grade single cable and connector system
- Available in a 90-degree gearbox
- LED indicator lights (pass/fail)
- Push-button select torque
- Lightweight and ergonomic pistol grip

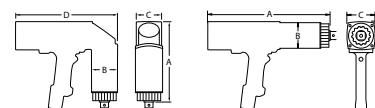
## TOUCH CONTROL CASE

- Easy to use interface
- Pre-sets for torque and angle adjustments
- Quick error-free torque and angle adjustments
- Complete recalibrations
- Data logging with export to laptop



## RAD SMART SOCKETS™

RAD SMART SOCKETS™ can connect to the E-RAD BLU tool via **Bluetooth®** technology. This combination allows you to automatically calibrate your E-RAD BLU to any joint!



## IMPERIAL

PART NUMBER	TOOL MODEL	DRIVE SIZE	TORQUE (ft. lbs.) LOW HIGH	RPM 120V 230V	WEIGHT (lbs.)	DIMENSION A	DIMENSION B	DIMENSION C	DIMENSION D
21980	E-RAD BLU 700	0.75"	100 700	15 30	12	13.25"	2.5"	3.0"	10.65"
24161	E-RAD BLU 1500	1.0"	200 1500	8 16	13	13.28"	2.7"	3.0"	10.65"
21981	E-RAD BLU 2500 COMP	1.0"	250 2500	4.9 10	18	14.8"	3.0"	3.0"	10.65"
24221	E-RAD BLU 2500 COMP-90-Degree	1.0"	250 2500	6 12	18	9.65"	3.0"	3.1"	11.83"
21982	E-RAD BLU 3000	1.0"	500 3000	4.1 8.5	23.5	16.75"	3.4"	3.5"	11.29"
21983	E-RAD BLU 6000	1.5"	1000 6000	2.1 4.5	29	16.5"	4.0"	3.5"	11.29"
21984	E-RAD BLU 7500	1.5"	1500 7500	1.5 3	33	17.0"	4.25"	4.25"	11.29"
24234	E-RAD BLU 11K*	1.5"	3000 11000	1.2 2.3	43	18.3"	5.0"	5.0"	11.29"

## METRIC

PART NUMBER	TOOL MODEL	DRIVE SIZE	TORQUE (Nm) LOW HIGH	RPM 120V 230V	WEIGHT (Kg)	DIMENSION A (mm)	DIMENSION B (mm)	DIMENSION C (mm)	DIMENSION D (mm)
21985	E-RAD BLU 950-M	0.75"	135 950	15 30	5.5	340	65	78	275
24162	E-RAD BLU 2000-M	1.0"	270 2000	8 16	5.9	337	69	78	275
21986	E-RAD BLU 3400-M COMP	1.0"	340 3400	4.9 10	7.6	380	76	78	275
22434	E-RAD BLU 3400-M COMP-90-Degree	1.0"	340 3400	6 12	8.3	210	76	78	300
21987	E-RAD BLU 4000-M	1.0"	675 4000	4.1 8.5	11	430	86	88	287
21988	E-RAD BLU 8000-M	1.5"	1350 8000	2.1 4.5	13.5	419	100	100	287
21989	E-RAD BLU 10K-M	1.5"	2000 10000	1.5 3	15	432	105	105	287
24224	E-RAD BLU 15K-M*	1.5"	4000 15000	1.2 2.3	20	465	127	127	287

Accuracy of  $\pm 2.8\%$ , Repeatability of  $\pm 2\%$  | \*Also available in a 2.5" square drive.

# E-RAD BLU-S



## CASE

Durable, light weight, shock proof. Designed to protect your RAD investment.

## SOFT SLING

Great for horizontal or vertical applications and allows the tool to easily pivot between these two orientations.

Bluetooth® is a registered trademark of Bluetooth SIG, Inc. and any use of such marks by New World Technologies Inc. is under license. Other trademarks and trade names are those of their respective owners.

# Supreme Transducer Technology with High Accuracy

ELECTRONIC



The integrated transducer measures torque output in real time, ensuring the tool stops precisely where it needs to. This feedback loop allows the E-RAD BLU-S to operate accurately regardless of the joint condition and will even allow you to check a previously tightened bolt without applying too much torque.

## FEATURES

- Built-in transducer
- Advanced data logging and tool management features
- Password protection on three user levels: basic, intermediate, and advanced
- Operator identification ensures traceability of each torque sequence performed
- Capable of torque and angle bolting sequence
- LED indicator lights (pass/fail)
- Extremely low noise level at only 75dB

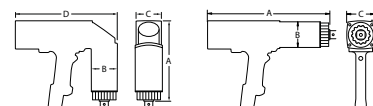
## TOUCH CONTROL CASE

- Easy to use interface
- Pre-sets for torque and angle adjustments
- Quick error-free torque and angle adjustments
- Complete recalibrations
- Data logging with export to laptop



## RAD SMART SOCKETS™

RAD SMART SOCKETS™ can connect to the E-RAD BLU tool via **Bluetooth®** technology. This combination allows you to automatically calibrate your E-RAD BLU to any joint!



## IMPERIAL

PART NUMBER	TOOL MODEL	DRIVE SIZE	TORQUE (ft. lbs.) LOW HIGH	RPM 120V 230V	WEIGHT (lbs.)	DIMENSION A	DIMENSION B	DIMENSION C	DIMENSION D
30079	E-RAD BLU-S 700	0.75"	100 700	15 30	13	14.96"	2.84"	3.03"	10.65"
28836	E-RAD BLU-S 2500 COMP	1.0"	250 2500	5 10	19	16.21"	3.41"	3.03"	10.65"
31190	E-RAD BLU-S 3000	1.0"	500 3000	5 10	24.5	17.76"	3.73"	3.48"	11.29"
31191	E-RAD BLU-S 6000	1.5"	1000 6000	2.1 4.5	30	17.71"	4.35"	3.48"	11.29"
31192	E-RAD BLU-S 7500	1.5"	1500 8000	1.5 3	34	18.53"	4.48"	3.48"	11.29"
29314	E-RAD BLU-S 11K*	1.5"	3000 11000	1.5 2.3	44	19.81"	5.21"	3.48"	11.29"

## METRIC

PART NUMBER	TOOL MODEL	DRIVE SIZE	TORQUE (Nm) LOW HIGH	RPM 120V 230V	WEIGHT (Kg)	DIMENSION A (mm)	DIMENSION B (mm)	DIMENSION C (mm)	DIMENSION D (mm)
26937	E-RAD BLU-S 950-M	0.75"	135 950	15 30	5.9	380	72	77	270.5
26938	E-RAD BLU-S 3400-M COMP	1.0"	340 3400	5 10	8.6	412	87	77	270.5
22759	E-RAD BLU-S 4000-M	1.0"	675 4000	5 10	11.1	451	95	88	287
25282	E-RAD BLU-S 8000-M	1.5"	1350 8100	2.1 4.5	13.6	450	110.5	88	287
26939	E-RAD BLU-S 10K-M	1.5"	2000 10000	1.5 3	15.4	471	114	88	287
29315	E-RAD BLU-S 15K-M*	1.5"	4050 15000	1.5 2.3	20	503	132	88	287

Accuracy of +/- 2.8%, Repeatability of +/- 2% | \*Also available in a 2.5" square drive.

# B-RAD BATTERY

**SERIES**

## ADVANCED ELECTRONICS HIGH DEGREE OF ACCURACY

No compressed air or electricity? No problem! RAD Torque System's battery powered torque wrench, the B-RAD Series, is fuelled by lithium-ion batteries that give you the same industrial strength power. In fact, the very first B-RAD was the first digital cordless torque wrench on the market.

Now you can torque up to 11,000 ft. lbs./ 15,000 Nm with the all-new B-RAD Xtreme, which is available in three different sizes.

### INCLUDED ACCESSORIES

- Reaction arm and retaining ring
- Charger and two 18V batteries
- Weatherproof storage case
- Calibrated to ISO 17025 standards





PNEUMATIC



ELECTRONIC



BATTERY



ELECTRIC



AUDIT EQUIPMENT



# B-RAD XTREME

NEW!



DISPLAY

## CASE

Durable, light weight,  
shock proof. Designed  
to protect your  
RAD investment.



# All New Tool with Extreme Battery-Powered Torque!

BATTERY



The all-new B-RAD Xtreme (B-RAD X) raises the bar for torque range capacity with a battery tool, maxing out at an impressive 11,000 ft. lbs./ 15,000 Nm. – making the B-RAD X officially the biggest cordless torque tool on the market. Plus, with 4% accuracy this tool will stand up to the toughest scrutiny. The B-RAD X captures attention with its sleek new white design and rubber handle paired with RAD Torque's patented and world-renowned gearbox technology.

## MODELS

- B-RAD X 3000/ 4000-M
- B-RAD X 5000/ 7000-M
- B-RAD X 8000/ 10K-M
- B-RAD X 11K/ 15K-M

## FEATURES

- Brushless DC motor for added durability and accuracy
- Redesigned anti-fatigue trigger switch
- Standard hand-guard for added operator protection
- Two-hand start options to prevent hand injuries
- Battery latch lock to protect batteries from falling
- 4-button interface with high-contrast LED display provides feedback during operation.

## ACCESSORIES



### SOFT SLING

Great for horizontal or vertical applications and allows the tool to easily pivot between these two orientations.



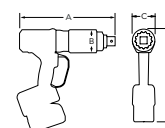
### TOP HANDLE

The top handle is intended for horizontal applications, or applications that can tolerate the extra envelope this adds to the tool.



### REAR HANDLE

The rear handle is intended for vertical applications, or for use in conjunction with the sling in horizontal applications to provide a better leverage point over just the handle by itself.



## IMPERIAL

PART NUMBER	TOOL MODEL	DRIVE SIZE	TORQUE (FT LBS) LOW	TORQUE (FT LBS) HIGH	RPM	WEIGHT (lbs)	DIMENSION A (in)	DIMENSION B (in)	DIMENSION C (in)	DIMENSION D (in)
30983	B-RAD X 3000	1"	250	3000	3.9	17	11.75	3.25	3.5	13.75
30656	B-RAD X 5000	1.5"	500	5000	2.4	23	12.5	3.75	3.75	14.25
30658	B-RAD X 8000	1.5"	740	8000	1.7	30	13.75	4.25	4.25	14.5
30660	B-RAD X 11K*	1.5"	1100	11000	1.2	42	15.25	5	5	14.75

## METRIC

PART NUMBER	TOOL MODEL	DRIVE SIZE	TORQUE (Nm) LOW	TORQUE (Nm) HIGH	RPM	WEIGHT (Kg)	DIMENSION A (mm)	DIMENSION B (mm)	DIMENSION C (mm)	DIMENSION D (mm)
30984	B-RAD X 4000-M	1"	340	4000	3.9	7.9	298	83	89	349
30657	B-RAD X 7000-M	1.5"	700	7000	2.4	10.5	318	95	95	362
30659	B-RAD X 10K-M	1.5"	1000	10850	1.7	13.8	349	108	108	369
30661	B-RAD X 15K-M*	1.5"	1500	15000	1.2	19.3	387	127	127	375

Accuracy of +/-4%, Repeatability of +/-2% | \*Also available in a 2.5" square drive.



# B-RAD SELECT



DISPLAY



# Torque ranges up to 5000 ft. lbs. / 7000 Nm

BATTERY



The B-RAD Select Series offers higher speed and longer battery life while incorporating a new torque display with buttons. The B-RAD Select allows the user to easily select the target torque. Patented Product.

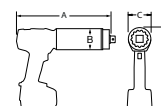
## FEATURES

- Digital torque settings, able to increase or decrease the value by 10 ft. lbs./ 10 Nm
- Torque ranges up to 5,000 ft. lbs./ 7,000 Nm
- Equipped with the latest lithium-ion technology
- Suitable for pre-torque and service jobs where electricity or compressed air are not available
- Longer battery life

## CASE

Durable, light weight, shock proof. Designed to protect your RAD investment.

## IMPERIAL



PART NUMBER	TOOL MODEL	DRIVE SIZE	TORQUE (ft. lbs.) LOW	TORQUE (ft. lbs.) HIGH	RPM	WEIGHT (lbs.)	DIMENSION A	DIMENSION B	DIMENSION C	DIMENSION D
28283	B-RAD SELECT 500	0.75"	130	500	21.5	7.7	9.1"	2.5"	2.65"	10.3"
28285	B-RAD SELECT 1000	0.75"	200	1000	10.5	7.8	9.1"	2.5"	2.65"	10.3"
28286	B-RAD SELECT 1000-2	0.75"	400	1000	71	9.4	11"	2.5"	2.65"	10.3"
28287	B-RAD SELECT 1500	1.0"	300	1500	6	8.9	9.6"	2.7"	2.7"	10.3"
28288	B-RAD SELECT 1500-2	1.0"	300	1500	19.5	10.7	11.75"	2.7"	2.7"	10.3"
28289	B-RAD SELECT 3000	1.0"	600	3000	3	13.3	11.2"	3.2"	3.2"	10.5"
28290	B-RAD SELECT 3000-2	1.0"	600	3000	20	14.7	13.25"	3.2"	3.2"	10.5"
28291	B-RAD SELECT 5000	1.5"	1000	5000	2.1	19.3	11.6"	3.75"	3.75"	10.7"

## METRIC

PART NUMBER	TOOL MODEL	DRIVE SIZE	TORQUE (Nm) LOW	TORQUE (Nm) HIGH	RPM	WEIGHT (Kg)	DIMENSION A (mm)	DIMENSION B (mm)	DIMENSION C (mm)	DIMENSION D (mm)
28264	B-RAD SELECT 700-M	0.75"	170	700	21.5	3.5	231	63	67	262
28266	B-RAD SELECT 1400-M	0.75"	300	1400	10.5	3.5	231	63	67	262
28267	B-RAD SELECT 1400-2-M	0.75"	540	1400	71	4.3	279	63	67	262
28268	B-RAD SELECT 2000-M	1.0"	400	2000	6	4.0	244	69	69	262
28269	B-RAD SELECT 2000-2-M	1.0"	400	2000	19.5	4.9	298	69	69	262
28270	B-RAD SELECT 4000-M	1.0"	800	4000	3	6.0	285	81	81	266
28271	B-RAD SELECT 4000-2-M	1.0"	800	4000	20	6.7	337	81	81	266
28272	B-RAD SELECT 7000-M	1.5"	1350	7000	2.1	8.8	295	95	95	272

Accuracy of +/-5%, Repeatability of +/-2%

# B-RAD SELECT OFFSET



# The B-RAD Select with an offset gearbox for tight spaces

BATTERY



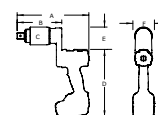
The B-RAD Select Offset offers more flexibility for those tight spaces. The design is meant to allow the tool to get into spaces, specifically flanges, where there isn't enough overhead clearance for most pistol grip tools. An excellent battery-powered alternative for flanges that only hydraulics could fit in. Patented Product.

## FEATURES

- Now with digital torque settings, able to increase or decrease the value by 10 ft. lbs./ 10 Nm
- Torque ranges up to 5,000 ft. lbs./ 7,000 Nm
- Equipped with the latest lithium-ion technology.
- Suitable for pre-torque and service jobs where electricity or compressed air are not available.
- Longer battery life

## CASE

Durable, light weight, shock proof. Designed to protect your RAD investment.



## IMPERIAL

PART NUMBER	TOOL MODEL	DRIVE SIZE	TORQUE (ft. lbs.)		RPM	WEIGHT (lbs.)	DIMENSION A	DIMENSION B	DIMENSION C	DIMENSION D	DIMENSION E	DIMENSION F
			LOW	HIGH								
30002	B-RAD SELECT OFFSET 500	0.75"	130	500	21.5	8.7	10.2"	6.1"	2.5"	10.3"	3.3"	3.3"
29572	B-RAD SELECT OFFSET 1000	0.75"	200	1000	10.5	8.8	10.3"	6.1"	2.5"	10.3"	3.3"	3.3"
30004	B-RAD SELECT OFFSET 1500	1.0"	300	1500	6	9.9	10.9"	6.8"	2.7"	10.3"	3.4"	3.3"
30006	B-RAD SELECT OFFSET 3000	1.0"	600	3000	3	14.3	12.3"	8.2"	3.2"	10.3"	3.6"	3.3"
30008	B-RAD SELECT OFFSET 5000	1.5"	1000	5000	2.1	20.3	13.2"	9.1"	3.7"	10.3"	3.9"	3.3"

## METRIC

PART NUMBER	TOOL MODEL	DRIVE SIZE	TORQUE (Nm)		RPM	WEIGHT (Kg)	DIMENSION A (mm)	DIMENSION B (mm)	DIMENSION C (mm)	DIMENSION D (mm)	DIMENSION E (mm)	DIMENSION F (mm)
			LOW	HIGH								
30003	B-RAD SELECT OFFSET 700-M	0.75"	170	700	21.5	3.9	260	155	63	262	83	83
29574	B-RAD SELECT OFFSET 1400-M	0.75"	270	1400	10.5	3.9	300	165	63	262	83	83
30005	B-RAD SELECT OFFSET 2000-M	1.0"	400	2000	6	4.4	277	172	69	262	86	83
30007	B-RAD SELECT OFFSET 4000-M	1.0"	800	4000	3	6.4	312	208	81	262	92	83
30009	B-RAD SELECT OFFSET 7000-M	1.5"	1350	7000	2.1	9.2	335	230	95	262	100	83

Accuracy of +/-5%, Repeatability of +/-2%

# DIGITAL B-RAD



DISPLAY



# Ideal for applications where compressed air is not available

Digital B-RAD is the world's first digital, cordless, and lithium-ion battery tool on the market. With advanced patented technology containing digital display and single increment torque settings.

BATTERY



## FEATURES

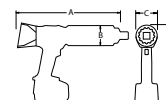
- Available with torque and angle option
- Programmable pre-set torque settings
- Latest lithium-ion 18V battery technology
- High accuracy of +/-5%
- Automatic 2-speed gearbox
- Patented product

## CASE

Durable, light weight, shock proof. Designed to protect your RAD investment.



PART NUMBER	DESCRIPTION
26400	DB-RAD ANGLE OPTION



## IMPERIAL

PART NUMBER	TOOL MODEL	DRIVE SIZE	TORQUE (ft. lbs.) LOW HIGH	RPM	WEIGHT (lbs.)	NOISE LEVEL	DIMENSION A	DIMENSION B	DIMENSION C	DIMENSION D
21779	DB-RAD 500-2	0.75"	50 500	59	11	80 db	12.67"	2.5"	2.5"	10.25"
21783	DB-RAD 1000-2	0.75"	100 1000	19	11.6	80 db	13"	2.5"	2.5"	10.25"
21787	DB-RAD 1500-2	1.0"	150 1500	17	11.8	80 db	13"	2.7"	2.7"	10.50"
24965	DB-RAD 3000-2	1.0"	300 3000	13	19.5	80 db	15.2"	3.2"	3.2"	10.5"

## METRIC

PART NUMBER	TOOL MODEL	DRIVE SIZE	TORQUE (Nm) LOW HIGH	RPM	WEIGHT (Kg)	NOISE LEVEL	DIMENSION A (mm)	DIMENSION B (mm)	DIMENSION C (mm)	DIMENSION D (mm)
22876	DB-RAD 700-2-M	0.75"	70 700	59	5.0	80 db	321	63	63	279
22878	DB-RAD 1400-2-M	0.75"	140 1400	19	5.2	80 db	330	63	63	279
22880	DB-RAD 2000-2-M	1.0"	200 2000	17	5.3	80 db	330	68	68	279
24966	DB-RAD 4000-2-M	1.0"	400 4000	9	7.1	80 db	398	81	81	279

Accuracy of +/-5%, Repeatability of +/-2%

# V-RAD SELECT

**SERIES**

## LIGHTWEIGHT + COMPACT ELECTRIC POWERED

V-RAD Select Series offers a lightweight electric torque wrench, with feature designed to delivery accuracy in an easy-to-use tool.

### INCLUDED ACCESSORIES

- All V-RAD Electrical Series Tool Includes:
- Reaction arm & retaining ring
- Weatherproof storage case
- Calibrated to ISO 17025 standards



PNEUMATIC



ELECTRONIC



BATTERY



ELECTRIC



AUDIT EQUIPMENT



# V-RAD SELECT





# Quick adjust torque with equal power in forward and reverse

ELECTRIC



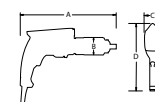
V-RAD Select electric torque wrench is used for the installation or removal of heavy-duty fasteners where accuracy, power, and safety are required. Quick adjust torque settings. Equal power in forward and reverse.

## FEATURES

- Torque ranges up to 3,000 ft. lbs./ 4,000 Nm
- Digital torque settings to increase and decrease the value by 10 ft. lbs./ 10 Nm
- Available in both 120V or 230V

## CASE

Durable, light weight, shock proof.  
Designed to protect your RAD investment.



## IMPERIAL

PART NUMBER	TOOL MODEL	DRIVE SIZE	TORQUE (ft. lbs.) LOW HIGH	RPM	WEIGHT (lbs.)	DIMENSION A	DIMENSION B	DIMENSION C	DIMENSION D
25628	V-RAD SELECT 1000	0.75"	100 1000	8.8	8.6	12"	2.5"	2.9"	8"
25629	V-RAD SELECT 1500	1.0"	150 1500	5.7	9.6	12.25"	2.7"	2.9"	8"
25631	V-RAD SELECT 3000	1.0"	300 3000	2.7	13.7	13.5"	3.1"	3.1"	8"

## METRIC

PART NUMBER	TOOL MODEL	DRIVE SIZE	TORQUE (Nm) LOW HIGH	RPM	WEIGHT (Kg)	DIMENSION A (mm)	DIMENSION B (mm)	DIMENSION C (mm)	DIMENSION D (mm)
25633	V-RAD SELECT 1400-M	0.75"	140 1400	8.8	3.9	305	64	74	203
25634	V-RAD SELECT 2000-M	1.0"	200 2000	5.7	5.9	311	69	74	203
25636	V-RAD SELECT 4000-M	1.0"	400 4000	2.7	6.2	343	79	79	203

Accuracy of +/-5%, Repeatability of +/-2%

# RAD AUDIT EQUIPMENT

## SERIES

## INSTANT TORQUE READ-OUT

Accurate and reliable torque output starts with calibration. That's why RAD Torque is using its state-of-the-art labs to build torque transducers and audit equipment to ensure that your RAD tools are operating perfectly, whether in a calibration lab or during a job - even directly on the application. RAD Calibration Systems are used by service centers around the world, and the patented RAD Smart Socket™ can be used to audit the torque output of any continuous output torque tool, replacing the standard socket and measuring torque precisely where it's applied!

### INCLUDED ACCESSORIES

- Weatherproof storage case
- Charger and USB cord
- Calibration certificate to ISO 17025



PNEUMATIC



ELECTRONIC



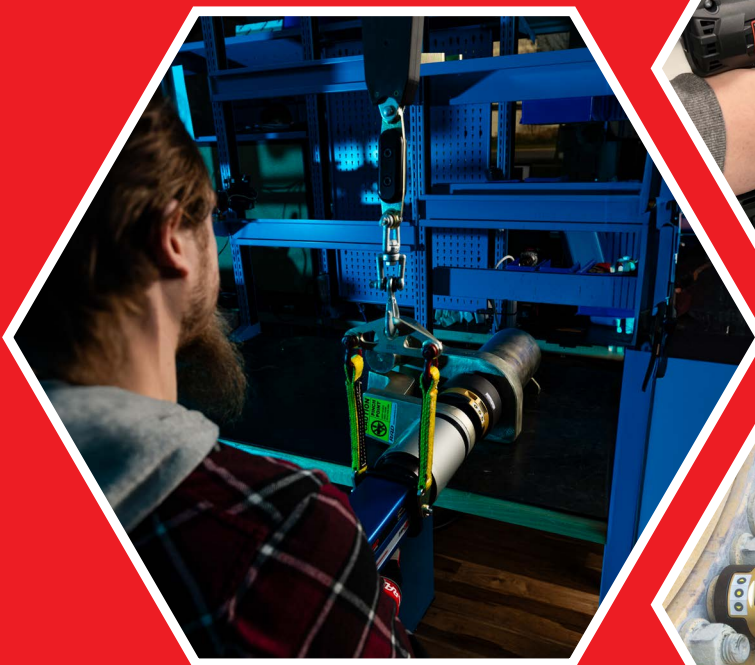
BATTERY



ELECTRIC



AUDIT EQUIPMENT



# B-RAD S



DISPLAY

Bluetooth® is a registered trademark of Bluetooth SIG, Inc. and any use of such marks by New World Technologies Inc. is under license. Other trademarks and trade names are those of their respective owners.



# Advanced on-the-go auditing, at your fingertips

AUDIT EQUIPMENT



The B-RAD S auditing tool, leveraging strain gauge technology, features a built-in transducer for real-time torque measurements, ensuring on-the-spot accuracy. It excels in bolt auditing applications, thanks to the integrated "prove" mode, allowing operators to check previously tightened bolts without the risk of over-torquing.

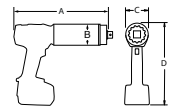
A must-have for on-the-go auditing, the B-RAD S torque wrench instills unmatched confidence in bolt tightening. With torque and angle capabilities, **Bluetooth®** connectivity, torque check function, and automatic reaction arm release, it guarantees precise and reliable torque applications. Tailored for professionals in various industries, it seamlessly combines mobility with precision, delivering a flawless auditing experience and the assurance of securely tightened bolts.

## FEATURES

- Torque range up to 5,000 ft. lbs./ 7,000 Nm
- Longer battery life
- Bolt counter
- Brushless motor
- Password protection
- Built-in transducer

## CASE

Durable, light weight, shock proof. Designed to protect your RAD investment.



## IMPERIAL

PART NUMBER	TOOL MODEL	DRIVE SIZE	TORQUE (ft. lbs.) LOW HIGH	RPM	WEIGHT (lbs.)	NOISE LEVEL	DIMENSION A	DIMENSION B	DIMENSION C	DIMENSION D
31800	B-RAD S 500	0.75"	50 500	21	9.2	85	12.25"	2.48"	2.75"	10"
31802	B-RAD S 1000	0.75"	100 1000	9.6	9.4	85	12.25"	2.48"	2.75"	10"
31804	B-RAD S 1500	1.0"	150 1500	5.6	10.8	85	12.63"	2.7"	2.75"	10"
31806	B-RAD S 3000	1.0"	300 3000	3	15.9	85	13.25"	3.18"	3.18"	10.13"
31808	B-RAD S 5000	1.5"	500 5000	1.9	21.7	85	14.25"	3.74"	3.74"	10.5"

## METRIC

PART NUMBER	TOOL MODEL	DRIVE SIZE	TORQUE (Nm) LOW HIGH	RPM	WEIGHT (Kg)	NOISE LEVEL	DIMENSION A (mm)	DIMENSION B (mm)	DIMENSION C (mm)	DIMENSION D (mm)
31801	B-RAD S 700-M	0.75"	70 700	21	4.2	85	311	63	70	254
31803	B-RAD S 1400-M	0.75"	135 1400	9.6	4.3	85	311	63	70	254
31805	B-RAD S 2000-M	1.0"	200 2000	5.6	4.9	85	321	69	70	254
31807	B-RAD S 4000-M	1.0"	400 4000	3.0	7.2	85	337	81	81	257
31809	B-RAD S 7000-M	1.5"	700 7000	1.9	9.8	85	362	95	95	267

Accuracy of +/-5%, Repeatability of +/-2%

# RAD SMART SOCKETS™



ANDROID APP ON  
Google play



Bluetooth® is a registered trademark of Bluetooth SIG, Inc. and any use of such marks by New World Technologies Inc. is under license. Other trademarks and trade names are those of their respective owners.

# Strain gauge technology measures torque with instant read-out

AUDIT EQUIPMENT



RAD Smart Sockets™ use RAD Torque's transducer technology combined with custom sockets to measure the actual torque applied to the bolt during a torque cycle. Its compact size and innovative technology make the Smart Socket™ a perfect audit tool for inspecting bolted joints and it can function as a calibration device for various torque tools. Patented product.

## FEATURES

- Measures and displays peak torque
- Full data collection - export to email by PDF, XLS, CSV
- View in real time via **Bluetooth®** onto your smartphone or tablet

## CASE

Durable, light weight, shock proof. Designed to protect your RAD investment.



## IMPERIAL

SMART SOCKET™ SERIES	PART NUMBER	SOCKET HEX SIZE	DRIVE SIZE	WEIGHT (lbs.)	DIMENSION (in)	
					HEIGHT A	DIAMETER B
SMART SOCKET™ 1500/2000-M (Imperial range: 150-1500)	25448	1-1/2" (38mm)	1"	2.96	3.42"	2.83"
	22157	1-3/4"	1"	2.85	3.42"	2.83"
SMART SOCKET™ 3400/4600-M (Imperial range: 340-3400)	22110	1-7/8"	1"	4.05	3.52"	3.39"
	24124	2.0" (51mm)	1"	3.72	3.52"	3.39"
	29997	2-1/16"	1"	3.89	3.60"	3.39"
	30211	2-1/4" (57mm)	1"	3.75	3.64"	3.39"
SMART SOCKET™ 8000/10800-M (Imperial range: 800-8000)	30212	2-5/8" (67mm)	1.5"	8.04	4.50"	4.13"
	28722	2-3/4" (70mm)	1.5"	8.28	4.75"	4.13"
	21915	3.0" (76mm)	1.5"	9.76	4.75"	4.53"
SMART SOCKET™ 12000/16200-M (Imperial range: 1200-12000)	27645	3-3/4" (95mm)	1.5"	13.3	5.21"	5.30"
	32405	4-1/8" (105mm)	1.5"	16	5.20"	5.95"
	27290	4-5/8"	1.5"	17.3	5.45"	6.40"
	27289	3 7/8"	1.5"	17.1	5.45"	5.75"
SMART SOCKET™ 18000/24000-M* (Imperial range: 1800-18000)	33773	3 7/8"	2.5"	21	6.50"	5.71"

## METRIC

SMART SOCKET™ SERIES	PART NUMBER	SOCKET HEX SIZE	DRIVE SIZE	WEIGHT (Kg)	DIMENSION (mm)	
					HEIGHT A	DIAMETER B
SMART SOCKET™ 1500/2000-M (Metric range: 200-2000)	20879	33mm	1"	1.2	100	72
	21363	36mm	1"	1.2	87	72
	22158	41mm (1-5/8")	1"	1.2	87	72
	20880	46mm (1-13/16")	1"	1.2	87	72
SMART SOCKET™ 3400/4600-M (Metric range: 460-4600)	20881	50mm	1"	1.5	89	86
	20882	55mm	1"	1.5	89	86
	20883	60mm	1"	1.5	89	86
SMART SOCKET™ 8000/10800-M (Metric range: 1100-10800)	23690	65mm (2-9/16")	1.5"	4	121	115
	28722	70mm (2-3/4")	1.5"	4	121	105
	20885	80mm	1.5"	4	121	115
SMART SOCKET™ 12000/16200-M (Metric range: 1600-16200)	25657	90mm	1.5"	5.8	126	131
	25658	100mm (3-15/16")	1.5"	7.2	132	146

Accuracy of +/-1% | \*Must be used with a deep reaction arm.

# RAD CALIBRATION SYSTEMS

## TRANSDUCER FEATURES

- Ranges up to 7,000 ft. lbs./ 9,500 Nm
- Screen on transducer allows for convenient reading
- Connect to RAD Torque Transducer Software via your computer or tablet
- Classified to BS 7882:2017 as Class 1 or better for the primary range (+/-0.5% of reading from 20% to 100% of full scale)

## Small calibration system



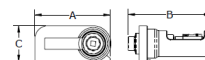
TRANSDUCER



SMALL CALIBRATION SYSTEM

## IMPERIAL

PART NUMBER	DESCRIPTION	TORQUE (ft. lbs.)		DRIVE SIZE	WEIGHT (lbs.)	DIMENSION A	DIMENSION B	DIMENSION C
		LOW	HIGH					
23442	RAD CALIBRATION SYSTEM 1500	75	1500	1.0"	4	11.75"	11.53"	5.50"
23443	RAD CALIBRATION SYSTEM 3500	175	3500	1.5"	10	14.50"	13.53"	7.00"
23444	RAD CALIBRATION SYSTEM 7000	350	7000	1.5"	11	14.50"	13.53"	7.00"



## METRIC

PART NUMBER	DESCRIPTION	TORQUE (Nm)		DRIVE SIZE	WEIGHT (Kg)	DIMENSION A (mm)	DIMENSION B (mm)	DIMENSION C (mm)
		LOW	HIGH					
23442	RAD CALIBRATION SYSTEM 1500	100	2000	1.0"	1.8	298	293	140
23443	RAD CALIBRATION SYSTEM 3500	250	4750	1.5"	4.5	368	344	178
23444	RAD CALIBRATION SYSTEM 7000	475	9500	1.5"	4.9	368	344	178



# Highly accurate calibration systems

AUDIT  
EQUIPMENT

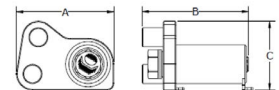


The RAD Calibration Systems have earned their place in calibration laboratories worldwide because of their high accuracy and repeatability.

Introducing the solution for big torque tools – RAD Torque's Large Calibration Stand. With the power to calibrate tools up to a whopping 18K ft. lbs./24K Nm, precision meets extreme performance. The Large Calibration Stand is paired with RAD's Smart Sockets (12K and 18K\*) to calibrate in two different sizes.



- 4340-material bolt, heat-treated for unparalleled strength and durability
- Optional 12K or 18K\* Smart Sockets, delivering accurate data logging for all your calibration needs
- Secure shipping crate to protect your investment



## IMPERIAL

PART NUMBER	DESCRIPTION	TORQUE (ft. lbs.)		DRIVE SIZE	WEIGHT (lbs.)	DIMENSION A	DIMENSION B	DIMENSION C
		LOW	HIGH					
30526	RAD 12K CALIBRATION SYSTEM	600	12K	1.5"	235	15.08"	19.70"	10.60"
33736	RAD 18K CALIBRATION SYSTEM*	900	18K	2.5"	235	15.08"	19.70"	10.60"

## METRIC

PART NUMBER	DESCRIPTION	TORQUE (Nm)		DRIVE SIZE	WEIGHT (Kg)	DIMENSION A (mm)	DIMENSION B (mm)	DIMENSION C (mm)
		LOW	HIGH					
30526	RAD 12K CALIBRATION SYSTEM	800	16K	1.5"	106.5	383	501	270
33736	RAD 18K CALIBRATION SYSTEM*	1200	24K	2.5"	106.5	383	501	270

\*Must be used with a deep reaction arm.

# ACCESSORIES

**LEADING THE BOLTING  
INDUSTRY IN SAFETY**



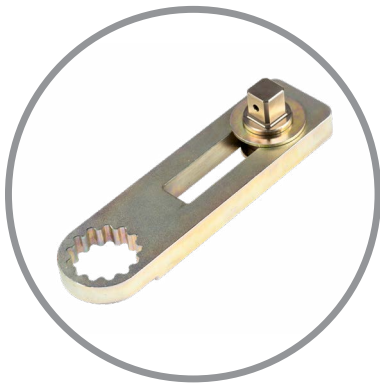
# ACCESSORIES

## RAD Safety

Ergonomics and safety are very important during the design phase of any new RAD tool. In addition to making the job safer through ergonomic design, we want our tools to be easy to use, powerful, accurate and very reliable. RAD believes safety features should not impede workplace efficiency and speed, but should make workers aware of the risks involved in working with powerful tools. RAD has developed a range of ergonomic and safety enhancing features.

### ERGONOMIC FEATURES

- RAD's patented planetary gear reduction drive system delivers 88 times less vibration than impact wrenches.
- No risk of HAVS injuries (Hand-Arm-Vibration-Syndrome). Lower risk than impact wrenches.
- Pistol grip trigger/control reduces operator error.
- RAD's low profile reaction arm eliminates all operational load on the operator.



Reaction Arms



Trigger Guard



Hand Guards

## RAD Nose Extensions

Available for most RAD models.  
Please contact us for custom inquiries.



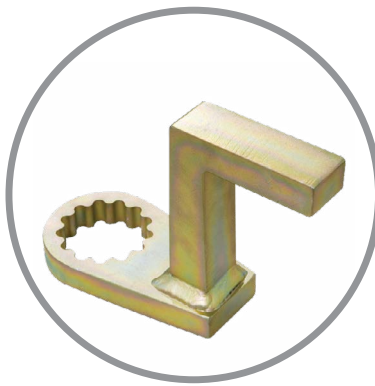


# RAD Reaction Arms

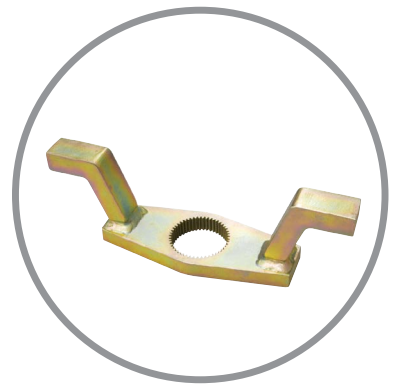
Each RAD tool includes a standard reaction arm. In addition to this, you can order the below special reaction arms to ensure correct reaction for different applications. Please consult our website for dimensions and part numbers.



**Standard  
Reaction Arm**



**Deep Socket  
Reaction Arm**



**Double Ended  
Reaction Arm**

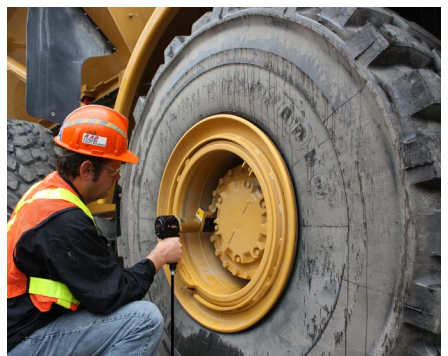
## Regulator & Tool Holder

Our regulator and tool holder make it easy to carry the RAD Pneumatic tool from job to job.

### FEATURES

- Offset handle for balanced carrying when the tool is stored in the storage pocket
- Comes complete with FRL and house assembly
- High-density polypropylene construction means the tool holder will stand up to the most demanding conditions
- Lightweight – only 4 lbs./ 1.8 Kgs
- Torque chart holder for quick reference
- Accessory pocket (6" x 6" or 152 x 152 mm) allows for quick and easy access to accessories such as reaction arms, snap rings and sockets





# NOTES

# NOTES



# RAD Torque Tool Limited Warranty

## New Tool Warranty

Any new tool branded with the RAD name and purchased from New World Technologies Inc., or through one of its authorized distributors or agents, is warranted to the original purchaser against defects in materials and workmanship for a period of one (1) year from the date of original calibration. Electric drive components such as electric motors, switches, and batteries etc., are covered for a period of six (6) months from the date of original calibration. Under the terms of this warranty, New World Technologies Inc., at its option and F.O.B. either its factory or an authorized service center, will replace or repair for the original purchaser, free of charge, any part or parts, found upon examination by New World Technologies Inc., to be defective in material or workmanship or both. If any product or part is replaced or repaired under the terms of this warranty, that product or part will carry the remainder of the warranty from the date of original calibration.

## Repaired Tool Warranty

Once a tool is beyond its new tool warranty, New World Technologies Inc., for a period of three (3) months from the date of repair, will replace or repair for the original purchaser, free of charge, any part or parts, found upon examination by New World Technologies Inc., to be defective in material or workmanship or both. If any product or part is replaced or repaired under the terms and conditions of this warranty, that product or part will carry the remainder of the warranty from the date of original repair.

To qualify for the above mentioned warranties, written notice to New World Technologies Inc. must be given immediately upon discovery of such defect, at which time New World Technologies Inc. will issue an authorization to return the tool. The defective item must promptly be returned to New World Technologies Inc. all freight charges prepaid. When returning a tool, the reaction arm/s being used with the tool must also be returned.

## Exclusions from Warranty

Tools or accessories found by New World Technologies Inc.'s sole judgement to have been altered, damaged, misused, abused, badly worn due to excessive utilization, lost, or improperly maintained will NOT be covered under the terms of this warranty.

Tools returned without the reaction arm/s will not be covered under the terms of this warranty.

Consumable parts and accessories (such as extensions, reaction blanks/arms) are not covered under this warranty.

Tools that have been relabeled without prior written consent of New World Technologies Inc. will not be covered under this warranty.

Equipment and accessories not manufactured by New World Technologies Inc. (measuring equipment, etc.) are warranted only to the extent of the original manufacturer's warranty.

*\*There is no other express warranty. Implied warranties, including those of merchantability and fitness for a particular purpose are limited to one year from date of calibration and to the extent permitted by law. Liability for consequential damages under any and all warranties are excluded to the extent exclusion is permitted by law.*

**NEW WORLD TECHNOLOGIES INC.**  
**1.800.983.0044**  
**INFO@RADTORQUE.COM**

# WORLDWIDE DISTRIBUTION



RAD Torque Systems works with a global group of Master Distributors to deliver our tools around the world. This worldwide distribution network ensures that you have access to our tools whenever and wherever you need them. This distribution network helps us stay engaged with customers and their needs so we can quickly adapt to changing industry and introduce new products as needed to meet these evolving demands.

Our worldwide distribution and sales network is a key component of our commitment to delivering high-quality tools and exceptional customer service.

CONTACT US AT [INFO@RADTORQUE.COM](mailto:info@radtorque.com) AND WE'LL CONNECT YOU WITH YOUR LOCAL DISTRIBUTOR!

01-2025



NEW WORLD TECHNOLOGIES INC  
#100 - 30722 MARSHALL ROAD | ABBOTSFORD, BC V2T 0H9 | CANADA

[RADTORQUE.COM](http://RADTORQUE.COM)