

LARGE CALIBRATION STAND 18K

Part Number: **33736**



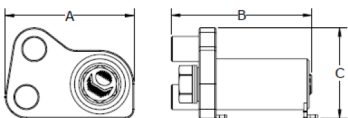
LIGHTER **FASTER** STRONGER

Redesigned for larger RAD Torque tools, the new Large Calibration Stand comes in two different sizes (with supporting Smart Sockets) - a 12K and an 18K. The large stand features a rundown fixture designed and produced to accurately calibrate RAD tools over 7,000 ft. lbs/ 9,500 Nm.

SPECIFICATIONS

Torque Ranges: 900 ft. lbs - 18,000 ft. lbs
Weight: 235 lbs.
Square Drive: 2.5"
Repeatability: +/-1%
Accuracy: +/-1%

DIMENSIONS



DIMENSION A	DIMENSION B	DIMENSION C
15.08"	19.70"	10.60"



Non
Impacting



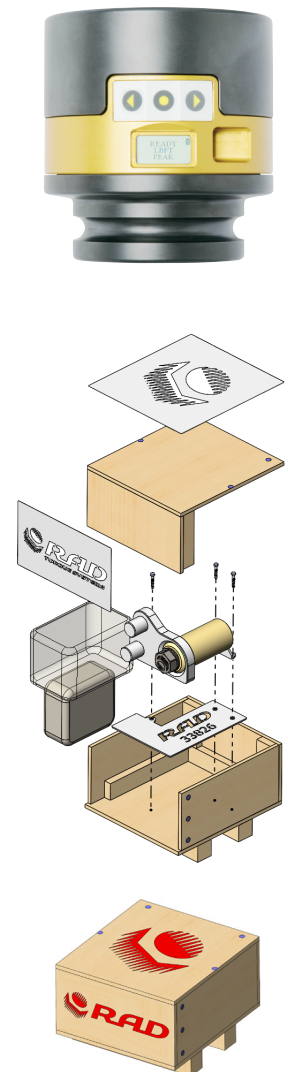
Safe &
Reliable



Class 1 Division
2 Group A, B,
C, D T4



Accredited
ISO/IEC 17025



NEW WORLD TECHNOLOGIES INC

#100 - 30722 MARSHALL RD | ABBOTSFORD, BC V2T 0H9 | CANADA
604.852.0405 | INFO@RADTORQUE.COM | RADTORQUE.COM