



ADVANCED
TORQUE
TECHNOLOGY



**NEW
LARGE
CALIBRATION
SYSTEM**



RAD PNEUMATIC



E-RAD BLU



B-RAD XTREME



B-RAD BATTERY



V-RAD ELECTRIC



AUDIT EQUIPMENT

2024 | **PRODUCT CATALOGUE**

CONTENTS

| | |
|--------------------------------------|-----------|
| OUR STORY | 4 |
| Company Profile | 6 |
| What is RAD Torque Systems? | 7 |
| Our Manufacturing Facility | 8 |
| Custom Tools | 9 |
| ISO 17025 Accredited Calibration Lab | 9 |
| Finding The Right Tool | 10 |
| RAD PNEUMATIC SERIES | 12 |
| RAD Single Speed | 14 |
| RAD High Speed | 16 |
| RAD Wheel Nut Bolting & OTR Mining | 18 |
| E-RAD BLU SERIES | 20 |
| E-RAD BLU | 22 |
| E-RAD BLU-S | 24 |
| B-RAD BATTERY SERIES | 26 |
| B-RAD Xtreme | 28 |
| B-RAD Select | 30 |
| B-RAD Select Offset | 32 |
| DIGITAL B-RAD | 34 |
| V-RAD ELECTRIC SERIES | 36 |
| V-RAD Select | 38 |
| AUDIT EQUIPMENT | 40 |
| B-RAD S | 42 |
| RAD Smart Sockets™ | 44 |
| RAD Calibration Systems | 46 |
| ACCESSORIES | 48 |
| RAD Safety Accessories | 50 |
| Nose Extensions | 50 |
| Reaction Arms | 51 |
| Regulator and Tool Holder | 51 |
| RAD LIMITED WARRANTY | 53 |

OUR STORY

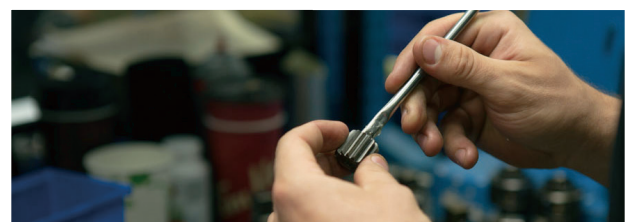
OUR STORY



Company Profile

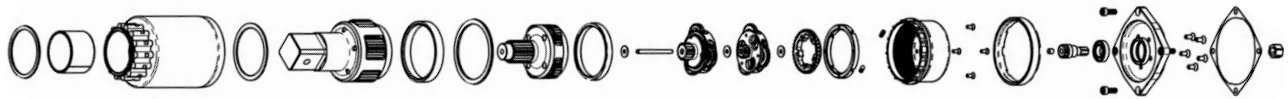
At RAD Torque Systems we manufacture extreme torque equipment, which includes pneumatic, battery powered, and electronic pistol grip torque wrenches. For 30 years, we have carefully designed and developed our tools in-house from our Canadian manufacturing facility to ensure quality from conception through to production. We believe this gives us greater control over every piece that goes into our product. That's why a RAD Torque tool is more durable, accurate and efficient than the competition.

Together with our parent company, New World Technologies Inc., we work to be a leader in the industry – always using latest technology to achieve the highest level of innovation, quality, and performance, which has resulted in multiple patents.



What is RAD Torque Systems?

RAD Torque Systems manufactures “planetary” torque wrenches. The name “RAD” is taken from the method used to assemble the gearbox known as “RADial” planetary gear reduction. RAD Torque tools are best known for the gearbox, which offers the best power-to-weight ratio on the market. That’s why a RAD Torque tool is lighter, stronger, and faster.



Exploded view of RAD gearbox



The best power-to-weight ratio on the market!



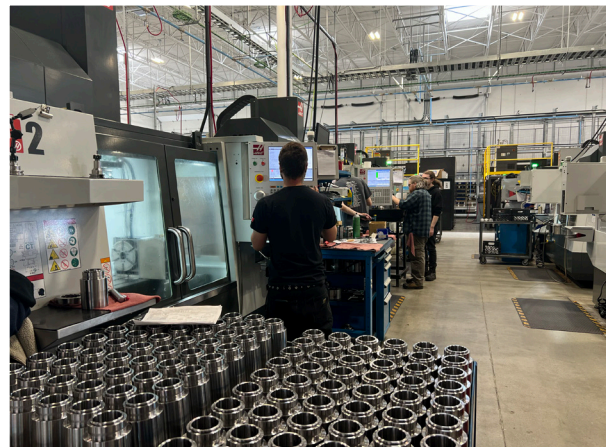
Our Manufacturing Facility

In 2022, RAD Torque Systems moved to a new 60,000 sq. ft. state-of-the-art manufacturing facility. As part of this expansion, RAD has invested millions of dollars in new CNC Machines to keep up with growing demand.

RAD Torque System has:

- 16 CNC Machines Centres
- 10 Lathes
- 4 Multi-Spindle Lathes
- 10 Gear Cutting Machines
- CAD and CAM Processing

RAD Torque Systems also has a team of mechanical, electrical and software engineers who play a vital role in the research and development of all our product lines.

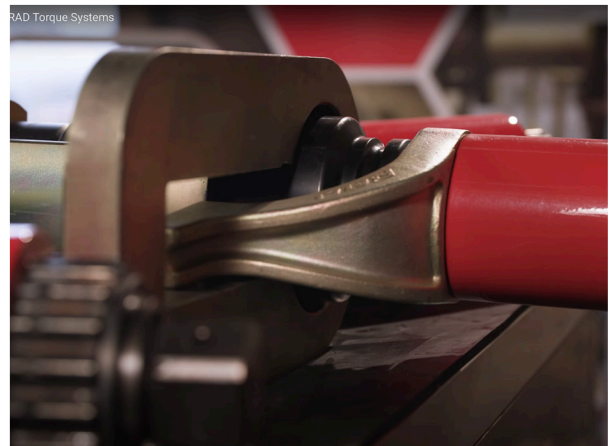
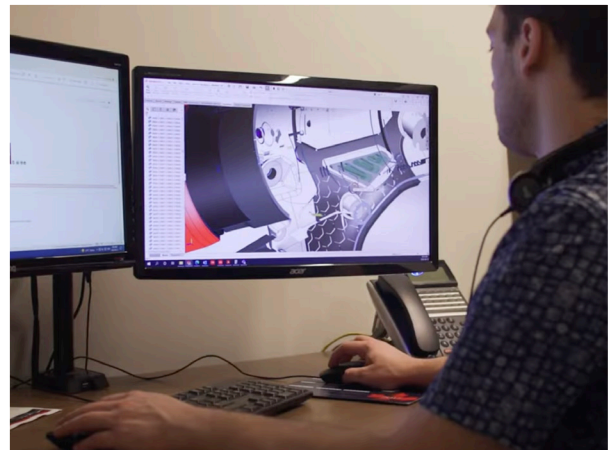


Custom Tools

Not all bolts are the same. That's why RAD Torque Systems will manufacture custom reaction arms and custom tools to fit most challenging bolting applications.

Our team of mechanical engineers work closely with you to understand your specific requirements and create tools that are tailored to your needs. By working with RAD Torque to develop a customized solution to your torque challenges you can ensure you are getting equipment that will perform efficiently and effectively – improving the productivity and quality of your work.

Customizing tools to fit your specific needs also creates a safer work environment.

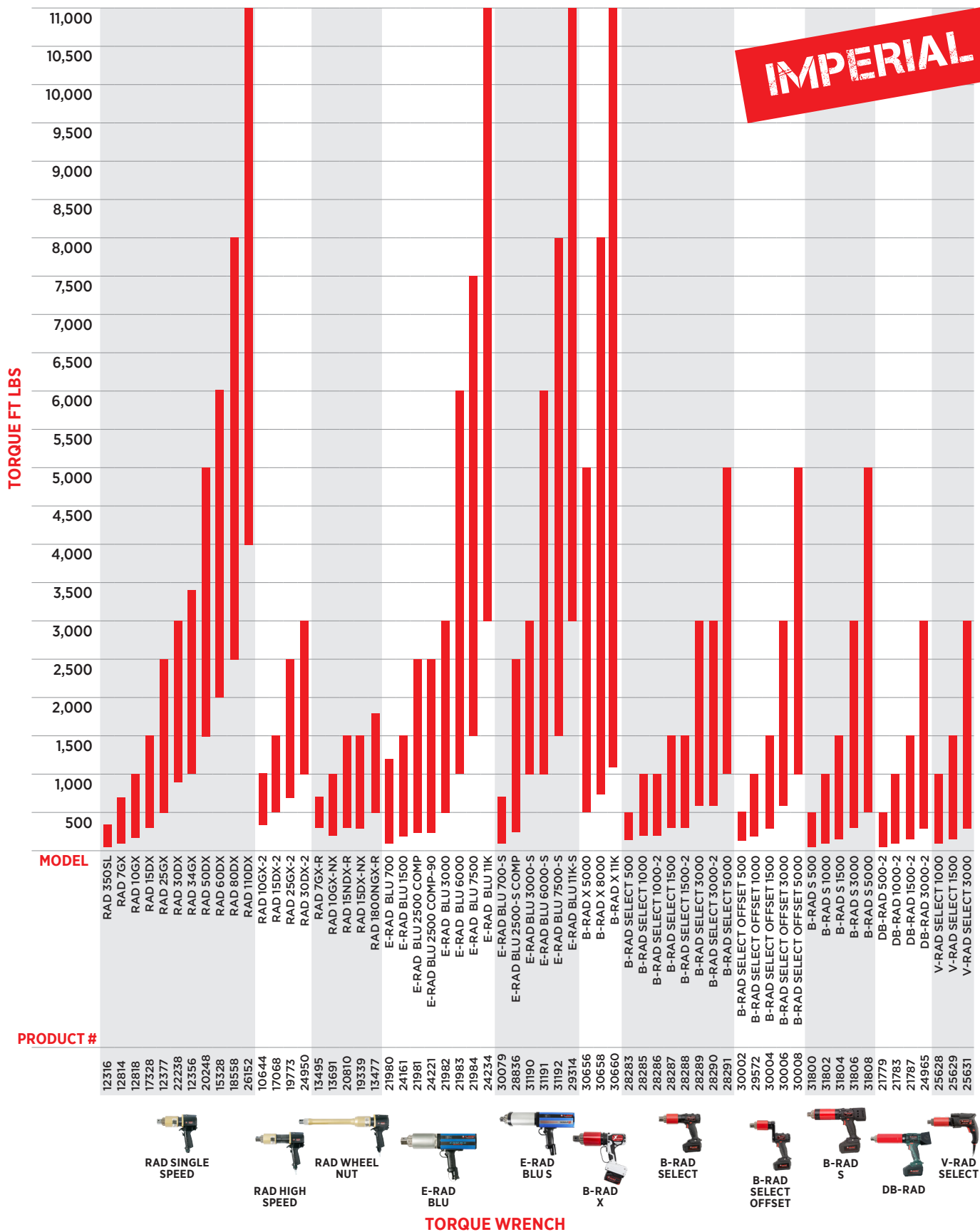


ISO 17025 Accredited Calibration Lab

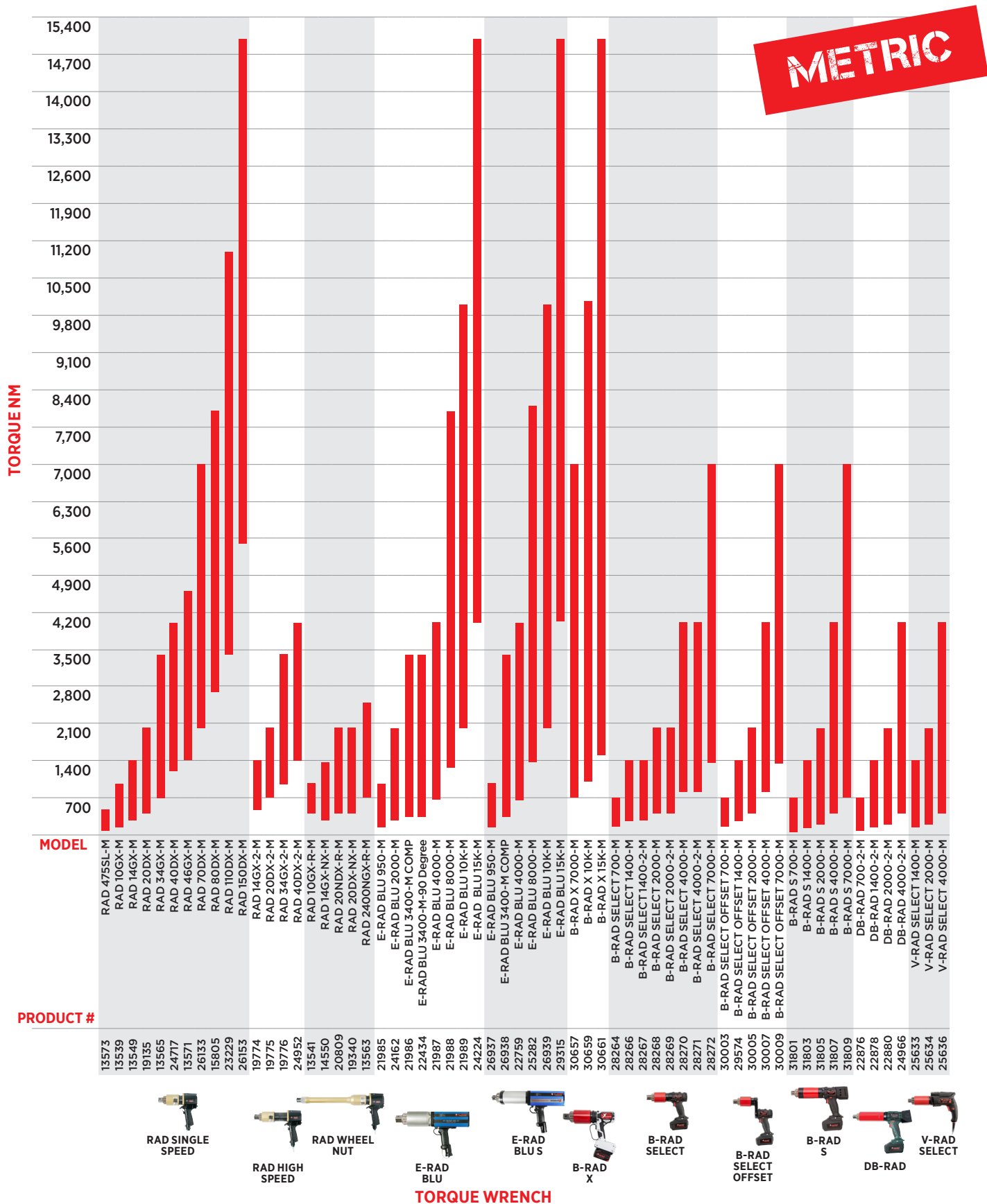
RAD Torque Systems has an accredited calibration laboratory to ensure maximum quality and calibration traceability (Cert # L2325 Calibration). Our calibration lab is committed to the professional practice and to the quality and impartiality of its calibration service. Our calibrations are performed only by fully trained and qualified technicians using calibrated equipment traceable to national standards.



Find The Right Tool



With The Right Torque



RAD PNEUMATIC

SERIES

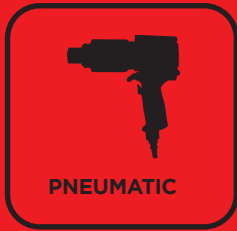
PRECISION DESIGN LIGHTWEIGHT + ERGONOMIC

RAD Torque Pneumatic Series of air tools provides uncompromised power and durability in a pistol grip wrench that can withstand the toughest environments. RAD Pneumatic tools come in a wide range of sizes for any job – big or small.

RAD Pneumatic tools come with planetary gear boxes, which mean the torque wrenches are vibration free and have the accuracy to prevent accidental under-and over-tightening.

INCLUDED ACCESSORIES

- Reaction arm & retaining ring
- Tool holder with FRL unit, 10 ft. / 3.6 m hose and fittings
- Safety instruction and operator's manual
- Calibrated to ISO 17025 standards



PNEUMATIC



ELECTRONIC



BATTERY



ELECTRIC



AUDIT EQUIPMENT



RAD SINGLE SPEED



Extreme duty torque wrenches for heavy duty applications

PNEUMATIC



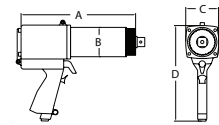
30 years of experience in gearbox engineering and design has brought about our latest generation in planetary gearboxes – RAD Single Speed. Designed for extreme duty use in a variety of industries worldwide, RAD Single Speed torque wrenches offer:

FEATURES

- The ultimate in power-to-weight ratio
- Wide torque range to suit multiple applications
- Unmatched reliability delivered by one of the most advanced engineered gear boxes on the market
- Controlled torque - accuracy of +/- 4% and repeatability of +/- 2%

FRL UNIT

- Low weight tool holder made from high-density polypropylene
- Includes pressure gauge, filter, regulator and oiler



IMPERIAL

| PART NUMBER | TOOL MODEL | DRIVE SIZE | TORQUE (ft. lbs.) LOW | TORQUE (ft. lbs.) HIGH | RPM | WEIGHT (lbs.) | NOISE LEVEL | DIMENSION A | DIMENSION B | DIMENSION C | DIMENSION D |
|-------------|------------|------------|-----------------------|------------------------|-----|---------------|-------------|-------------|-------------|-------------|-------------|
| 12316 | RAD 350SL | 0.75" | 50 | 350 | 65 | 6 | 80 db | 6.6" | 2.4" | 2.75" | 8.75" |
| 12814 | RAD 7GX | 0.75" | 100 | 700 | 30 | 8 | 80 db | 9.0" | 2.5" | 2.75" | 9.0" |
| 12818 | RAD 10GX | 0.75" | 200 | 1000 | 20 | 8 | 80 db | 8.15" | 2.5" | 2.75" | 8.07" |
| 17328 | RAD 15DX | 1.0" | 300 | 1500 | 10 | 8.6 | 80 db | 8.0" | 2.7" | 2.75" | 8.1" |
| 12377 | RAD 25GX | 1.0" | 500 | 2500 | 9 | 13.5 | 85 db | 9.7" | 3.1" | 3.3" | 9.5" |
| 22238 | RAD 30DX | 1.0" | 900 | 3000 | 8 | 14.8 | 85 db | 10" | 3.2" | 3.3" | 9.5" |
| 12356 | RAD 34GX* | 1.0" | 1000 | 3400 | 12 | 20 | 85 db | 12.5" | 3.4" | 3.7" | 10.8" |
| 20248 | RAD 50DX | 1.5" | 1500 | 5000 | 6.7 | 23.5 | 85 db | 11.25" | 3.75" | 3.75" | 10.4" |
| 15328 | RAD 60DX | 1.5" | 2000 | 6000 | 6.6 | 27.6 | 85 db | 13.7" | 4.0" | 4.0" | 10.9" |
| 18558 | RAD 80DX | 1.5" | 2500 | 8000 | 4 | 30.5 | 85 db | 12.15" | 4.25" | 4.25" | 10.65" |
| 26152 | RAD 110DX | 1.5" | 4000 | 11000 | 3 | 42 | 85 db | 13.9" | 5.0" | 5.0" | 11.07" |

METRIC

| PART NUMBER | TOOL MODEL | DRIVE SIZE | TORQUE (Nm) LOW | TORQUE (Nm) HIGH | RPM | WEIGHT (Kg) | NOISE LEVEL | DIMENSION A (mm) | DIMENSION B (mm) | DIMENSION C (mm) | DIMENSION D (mm) |
|-------------|-------------|------------|-----------------|------------------|-----|-------------|-------------|------------------|------------------|------------------|------------------|
| 13573 | RAD 475SL-M | 0.75" | 70 | 475 | 65 | 2.7 | 80 db | 167 | 61 | 70 | 222 |
| 13539 | RAD 10GX-M | 0.75" | 150 | 950 | 30 | 3.6 | 80 db | 228 | 63 | 70 | 228 |
| 13549 | RAD 14GX-M | 0.75" | 275 | 1400 | 20 | 3.8 | 80 db | 228 | 63 | 70 | 228 |
| 19135 | RAD 20DX-M | 1.0" | 400 | 2000 | 10 | 4.0 | 80 db | 203 | 69 | 70 | 228 |
| 13565 | RAD 34GX-M | 1.0" | 700 | 3400 | 9 | 6.1 | 85 db | 240 | 78 | 83 | 241 |
| 24717 | RAD 40DX-M | 1.0" | 1200 | 4000 | 8 | 6.7 | 85 db | 254 | 81 | 83 | 241 |
| 13571 | RAD 46GX-M* | 1.0" | 1400 | 4600 | 12 | 9.0 | 85 db | 317 | 86 | 94 | 274 |
| 26133 | RAD 70DX-M | 1.5" | 2000 | 7000 | 6.7 | 10.6 | 85 db | 285 | 95 | 95 | 264 |
| 15805 | RAD 80DX-M | 1.5" | 2700 | 8000 | 6.6 | 12.4 | 85 db | 348 | 101 | 101 | 276 |
| 23229 | RAD 110DX-M | 1.5" | 3400 | 11000 | 4 | 13.7 | 85 db | 308 | 108 | 108 | 270 |
| 26153 | RAD 150DX-M | 1.5" | 5500 | 15000 | 3 | 18.9 | 85 db | 353 | 127 | 127 | 281 |

Accuracy of +/-4%, Repeatability of +/-2% | *Also available in a 1.5" square drive.

RAD HIGH SPEED



Extreme duty torque wrenches with high RPM productivity

PNEUMATIC



Looking for high RPM productivity? RAD High Speed torque wrenches incorporate a precision-engineered, high-speed gearbox designed for faster run down and quick reaction point positioning on time sensitive bolting applications.

The two-speed models feature a unique fully automatic gearbox design, eliminating the time-consuming switch between high and low speed gear.

FEATURES

- The ultimate in power-to-weight ratio
- Wide torque range to suit multiple applications
- Unmatched reliability delivered by one of the most advanced engineered gear boxes on the market
- Controlled torque accuracy of $\pm 4\%$ and repeatability of $\pm 2\%$

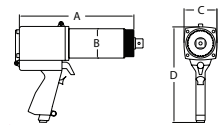
FRL UNIT

- Low weight tool holder made from high-density polypropylene
- Includes pressure gauge, filter, regulator and oiler



IMPERIAL

| PART NUMBER | TOOL MODEL | DRIVE SIZE | TORQUE (ft. lbs.) LOW | TORQUE (ft. lbs.) HIGH | RPM | WEIGHT (lbs.) | NOISE LEVEL | DIMENSION A | DIMENSION B | DIMENSION C | DIMENSION D |
|-------------|------------|------------|-----------------------|------------------------|-----|---------------|-------------|-------------|-------------|-------------|-------------|
| 10644 | RAD 10GX-2 | 0.75" | 350 | 1000 | 85 | 9.9 | 80 db | 10.3" | 2.5" | 2.75" | 8.1" |
| 17068 | RAD 15DX-2 | 1.0" | 500 | 1500 | 50 | 10.5 | 80 db | 9.9" | 2.7" | 2.75" | 8.1" |
| 19773 | RAD 25GX-2 | 1.0" | 700 | 2500 | 44 | 16.6 | 80 db | 12.0" | 3.1" | 3.3" | 10.0" |
| 24950 | RAD 30DX-2 | 1.0" | 1000 | 3000 | 49 | 16.1 | 80 db | 12.2" | 3.2" | 2.75" | 9.5" |



METRIC

| PART NUMBER | TOOL MODEL | DRIVE SIZE | TORQUE (Nm) LOW | TORQUE (Nm) HIGH | RPM | WEIGHT (Kg) | NOISE LEVEL | DIMENSION A (mm) | DIMENSION B (mm) | DIMENSION C (mm) | DIMENSION D (mm) |
|-------------|--------------|------------|-----------------|------------------|-----|-------------|-------------|------------------|------------------|------------------|------------------|
| 19774 | RAD 14GX-2-M | 0.75" | 475 | 1400 | 85 | 4.5 | 80 db | 261 | 63 | 70 | 205 |
| 19775 | RAD 20DX-2-M | 1.0" | 700 | 2000 | 50 | 4.7 | 80 db | 251 | 68 | 70 | 205 |
| 19776 | RAD 34GX-2-M | 1.0" | 950 | 3400 | 44 | 7.5 | 80 db | 305 | 78 | 84 | 254 |
| 24952 | RAD 40DX-2-M | 1.0" | 1400 | 4000 | 49 | 7.3 | 80 db | 309 | 81 | 83 | 254 |

Accuracy of $\pm 4\%$, Repeatability of $\pm 2\%$

RAD WHEEL NUT & OTR MINING



Precision Wheel Nut Bolting for Mining

PNEUMATIC



RAD Wheel Nut Bolting & Off-The-Road (OTR) tools were designed with one job in mind – to secure wheel nuts on OTR mining trucks. This pneumatic torque wrench comes with a nose extension that is ideal for reaching wheel nut studs that are recessed and have tight clearances.

FEATURES

- Removable custom reaction arms designed to fit virtually on any wheel configuration.
- Extended reaction point for safe and quick operation
- Accuracy to ensure correct tightened wheels.

FRL UNIT

- Low weight tool holder made from high-density polypropylene
- Includes pressure gauge, filter, regulator and oiler



NOSE EXTENSION (-R)

Developed exclusively for extreme duty maintenance of mining haul trucks from 50–400-ton capacities and front-end loaders. The extended nose allows safe access of virtually all wheel configurations found on today's heavy equipment.

NOSE EXTENSION KIT (-NX)

Designed with flexibility in mind. Complete with 3 different reaction arms and a nose extension for hard-to-reach areas, the NX Kit is a “go anywhere” tool capable of a variety of applications but especially suitable for off-road construction equipment.

IMPERIAL

| PART NUMBER | TOOL MODEL | DRIVE SIZE | TORQUE (ft. lbs.) LOW HIGH | RPM | WEIGHT (lbs.) | NOISE LEVEL | DIMENSION A | DIMENSION B | DIMENSION C | DIMENSION D | DIMENSION E | DIMENSION F |
|-------------|---------------|------------|-------------------------------|-----|---------------|-------------|-------------|-------------|-------------|-------------|-------------|-------------|
| 13495 | RAD 7GX-R | 0.75" | 300 700 | 115 | 12 | 80 db | 13.61" | 2.48" | 3.06" | 1.68" | 2.75" | 8.98" |
| 13691 | RAD 10GX-NX | 0.75" | 200 1000 | 20 | 8 | 80 db | 20.4" | 2.48" | 9.55" | 1.68" | 2.75" | 8.98" |
| 20810 | RAD 15NDX-R | 1.0" | 300 1500 | 10 | 16 | 80 db | 20.19" | 2.7" | 12.1" | 1.75" | 2.75" | 8.98" |
| 19339 | RAD 15DX-NX | 1.0" | 300 1500 | 10 | 8.6 | 80 db | 20.2" | 2.7" | 9.77" | 1.75" | 2.75" | 8.98" |
| 13477 | RAD 1800NGX-R | 1.0" | 500 1800 | 10 | 27.5 | 85 db | 20.26" | 3" | 11" | 2" | 3.31" | 9.53" |

METRIC

| PART NUMBER | TOOL MODEL | DRIVE SIZE | TORQUE (Nm) LOW HIGH | RPM | WEIGHT (Kg) | NOISE LEVEL | DIMENSION A (mm) | DIMENSION B (mm) | DIMENSION C (mm) | DIMENSION D (mm) | DIMENSION E (mm) | DIMENSION F (mm) |
|-------------|-----------------|------------|-------------------------|-----|-------------|-------------|------------------|------------------|------------------|------------------|------------------|------------------|
| 13541 | RAD 10GX-R-M | 0.75" | 400 1000 | 115 | 5.4 | 80 db | 345 | 63 | 78 | 43 | 70 | 228 |
| 14550 | RAD 14GX-NX-M | 0.75" | 275 1400 | 20 | 3.6 | 80 db | 518 | 63 | 243 | 43 | 70 | 228 |
| 20809 | RAD 20NDX-R-M | 1.0" | 400 2000 | 10 | 7.2 | 80 db | 513 | 69 | 307 | 44 | 70 | 228 |
| 19340 | RAD 20DX-NX-M | 1.0" | 400 2000 | 10 | 3.9 | 80 db | 513 | 69 | 248 | 44 | 70 | 228 |
| 13563 | RAD 2400NGX-R-M | 1.0" | 700 2400 | 10 | 12.4 | 85 db | 515 | 76 | 279 | 51 | 84 | 242 |

Accuracy of +/-4%, Repeatability of +/-2%

E-RAD BLU

SERIES

ADVANCED ELECTRONICS HIGH DEGREE OF ACCURACY

When the wind industry needs bolts torqued, the tool of choice to get the job done is the E-RAD BLU. These electronic torque wrenches deliver continuous torque in an ergonomic, lightweight, design to complete the job in record time. With the E-RAD BLU users also can use different handles per controller case.

The E-RAD BLU-S combines all the technology in the E-RAD BLU but with transducer technology for even more accuracy.

INCLUDED ACCESSORIES

- Reaction arm & retaining ring
- E-RAD tool handle
- E-RAD touch controller
- Single 15 ft. / 4.5 m cable
- Calibrated to ISO 17025



PNEUMATIC



ELECTRONIC



BATTERY



ELECTRIC



AUDIT EQUIPMENT



E-RAD BLU



90 DEGREE*



OFFSET*

*Only available on certain models.



**SHOWN WITH OPTIONAL
MOUNTING ACCESSORY**

CASE

Durable, light weight,
shock proof. Designed
to protect your
RAD investment.



Ability to use different handles with controller case

ELECTRONIC



E-RAD BLU precision torque wrench tools are designed to provide a high degree of accuracy (+/- 2.8%) and repeatability (+/- 2%). Using a patented gearbox design and the precision of an electric AC Servo motor, these tools deliver smooth continuous torque. Best of all, it's the most affordable system on the market.

FEATURES

- Advanced data logging and tool management features
- Military grade single cable and connector system
- Available in a 90-degree gearbox
- LED indicator lights (pass/fail)
- Push-button select torque
- Lightweight and ergonomic pistol grip

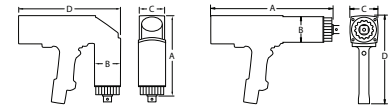
TOUCH CONTROL CASE

- Easy to use interface
- Pre-sets for torque and angle adjustments
- Quick error-free torque and angle adjustments
- Complete recalibrations
- Data logging with export to laptop



RAD SMART SOCKETS™

RAD SMART SOCKETS™ can connect to the E-RAD BLU tool via Bluetooth technology. This combination allows you to automatically calibrate your E-RAD BLU to any joint!



IMPERIAL

| PART NUMBER | TOOL MODEL | DRIVE SIZE | TORQUE (ft. lbs.) LOW | TORQUE (ft. lbs.) HIGH | RPM 120V | RPM 230V | WEIGHT (lbs.) | DIMENSION A | DIMENSION B | DIMENSION C | DIMENSION D |
|-------------|-------------------------------|------------|-----------------------|------------------------|----------|----------|---------------|-------------|-------------|-------------|-------------|
| 21980 | E-RAD BLU 700 | 0.75" | 100 | 700 | 15 | 30 | 12 | 13.25" | 2.5" | 3.0" | 10.65" |
| 24161 | E-RAD BLU 1500 | 1.0" | 200 | 1500 | 8 | 16 | 13 | 13.28" | 2.7" | 3.0" | 10.65" |
| 21981 | E-RAD BLU 2500 COMP | 1.0" | 250 | 2500 | 4.9 | 10 | 18 | 14.8" | 3.0" | 3.0" | 10.65" |
| 24221 | E-RAD BLU 2500 COMP-90 Degree | 1.0" | 250 | 2500 | 6 | 12 | 18 | 9.65" | 3.0" | 3.1" | 11.83" |
| 21982 | E-RAD BLU 3000 | 1.0" | 500 | 3000 | 4.1 | 8.5 | 23.5 | 16.75" | 3.4" | 3.5" | 11.29" |
| 21983 | E-RAD BLU 6000 | 1.5" | 1000 | 6000 | 2.1 | 4.5 | 29 | 16.5" | 4.0" | 3.5" | 11.29" |
| 21984 | E-RAD BLU 7500 | 1.5" | 1500 | 7500 | 1.5 | 3 | 33 | 17.0" | 4.25" | 4.25" | 11.29" |
| 24234 | E-RAD BLU 11K* | 1.5" | 3000 | 11000 | 1.2 | 2.3 | 43 | 18.3" | 5.0" | 5.0" | 11.29" |

METRIC

| PART NUMBER | TOOL MODEL | DRIVE SIZE | TORQUE (Nm) LOW | TORQUE (Nm) HIGH | RPM 120V | RPM 230V | WEIGHT (Kg) | DIMENSION A (mm) | DIMENSION B (mm) | DIMENSION C (mm) | DIMENSION D (mm) |
|-------------|----------------------------|------------|-----------------|------------------|----------|----------|-------------|------------------|------------------|------------------|------------------|
| 21985 | E-RAD BLU 950-M | 0.75" | 135 | 950 | 15 | 30 | 5.5 | 340 | 65 | 78 | 275 |
| 24162 | E-RAD BLU 2000-M | 1.0" | 270 | 2000 | 8 | 16 | 5.9 | 337 | 69 | 78 | 275 |
| 21986 | E-RAD BLU 3400-M COMP | 1.0" | 340 | 3400 | 4.9 | 10 | 7.6 | 380 | 76 | 78 | 275 |
| 22434 | E-RAD BLU 3400-90-M Degree | 1.0" | 340 | 3400 | 6 | 12 | 8.3 | 210 | 76 | 78 | 300 |
| 21987 | E-RAD BLU 4000-M | 1.0" | 675 | 4000 | 4.1 | 8.5 | 11 | 430 | 86 | 88 | 287 |
| 21988 | E-RAD BLU 8000-M | 1.5" | 1350 | 8000 | 2.1 | 4.5 | 13.5 | 419 | 100 | 100 | 287 |
| 21989 | E-RAD BLU 10K-M | 1.5" | 2000 | 10000 | 1.5 | 3 | 15 | 432 | 105 | 105 | 287 |
| 24224 | E-RAD BLU 15K-M* | 1.5" | 4000 | 15000 | 1.2 | 2.3 | 20 | 465 | 127 | 127 | 287 |

Accuracy of +/-2.8%, Repeatability of +/-2% | *Also available in a 2.5" square drive.

E-RAD BLU-S



CASE

Durable, light weight, shock proof. Designed to protect your RAD investment.

SOFT SLING

Great for horizontal or vertical applications and allows the tool to easily pivot between these two orientations.

Supreme Transducer Technology with High Accuracy

ELECTRONIC



The integrated transducer measures torque output in real time, ensuring the tool stops precisely where it needs to. This feedback loop allows the E-RAD BLU-S to operate accurately regardless of the joint condition and will even allow you to check a previously tightened bolt without applying too much torque.

FEATURES

- Built-in transducer
- Advanced data logging and tool management features
- Password protection on three user levels: basic, intermediate, and advanced
- Operator identification ensures traceability of each torque sequence performed
- Capable of torque and angle bolting sequence
- LED indicator lights (pass/fail)
- Extremely low noise level at only 75dB

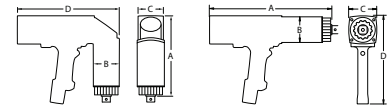
TOUCH CONTROL CASE

- Easy to use interface
- Pre-sets for torque and angle adjustments
- Quick error-free torque and angle adjustments
- Complete recalibrations
- Data logging with export to laptop



RAD SMART SOCKETS™

RAD SMART SOCKETS™ can connect to the E-RAD BLU tool via Bluetooth technology. This combination allows you to automatically calibrate your E-RAD BLU to any joint!



IMPERIAL

| PART NUMBER | TOOL MODEL | DRIVE SIZE | TORQUE (ft. lbs.) LOW HIGH | RPM 120V 230V | WEIGHT (lbs.) | DIMENSION A | DIMENSION B | DIMENSION C | DIMENSION D |
|-------------|-----------------------|------------|-------------------------------|------------------|---------------|-------------|-------------|-------------|-------------|
| 30079 | E-RAD BLU-S 700 | 0.75" | 100 700 | 15 30 | 13 | 14.96" | 2.84" | 3.03" | 10.65" |
| 28836 | E-RAD BLU-S 2500 COMP | 1.0" | 250 2500 | 5 10 | 19 | 16.21" | 3.41" | 3.03" | 10.65" |
| 31190 | E-RAD BLU-S 3000 | 1.0" | 500 3000 | 5 10 | 24.5 | 17.76" | 3.73" | 3.48" | 11.29" |
| 31191 | E-RAD BLU-S 6000 | 1.5" | 1000 6000 | 2.1 4.5 | 30 | 17.71" | 4.35" | 3.48" | 11.29" |
| 31192 | E-RAD BLU-S 7500 | 1.5" | 1500 8000 | 1.5 3 | 34 | 18.53" | 4.48" | 3.48" | 11.29" |
| 29314 | E-RAD BLU-S 11K* | 1.5" | 3000 11000 | 1.5 2.3 | 44 | 19.81" | 5.21" | 3.48" | 11.29" |

METRIC

| PART NUMBER | TOOL MODEL | DRIVE SIZE | TORQUE (Nm) LOW HIGH | RPM 120V 230V | WEIGHT (Kg) | DIMENSION A (mm) | DIMENSION B (mm) | DIMENSION C (mm) | DIMENSION D (mm) |
|-------------|-------------------------|------------|-------------------------|------------------|-------------|------------------|------------------|------------------|------------------|
| 26937 | E-RAD BLU-S 950-M | 0.75" | 135 950 | 15 30 | 5.9 | 380 | 72 | 77 | 270.5 |
| 26938 | E-RAD BLU 3400-S-M COMP | 1.0" | 340 3400 | 5 10 | 8.6 | 412 | 87 | 77 | 270.5 |
| 22759 | E-RAD BLU-S 4000-M | 1.0" | 675 4000 | 5 10 | 11.1 | 451 | 95 | 88 | 287 |
| 25282 | E-RAD BLU-S 8000-M | 1.5" | 1350 8100 | 2.1 4.5 | 13.6 | 450 | 110.5 | 88 | 287 |
| 26939 | E-RAD BLU-S 10K-M | 1.5" | 2000 10000 | 1.5 3 | 15.4 | 471 | 114 | 88 | 287 |
| 29315 | E-RAD BLU-S 15K-M* | 1.5" | 4050 15000 | 1.5 2.3 | 20 | 503 | 132 | 88 | 287 |

Accuracy of +/- 2.8%, Repeatability of +/- 2% | *Also available in a 2.5" square drive.

B-RAD BATTERY

SERIES

ADVANCED ELECTRONICS HIGH DEGREE OF ACCURACY

No compressed air or electricity? No problem! RAD Torque System's battery powered torque wrench, the B-RAD Series, is fuelled by lithium-ion batteries that give you the same industrial strength power. In fact, the very first B-RAD was the first digital cordless torque wrench on the market.

Now you can torque up to 11,000 ft. lbs./ 15,000 Nm with the all-new B-RAD Xtreme, which is available in three different sizes.

INCLUDED ACCESSORIES

- Reaction arm and retaining ring
- Charger and two 18V batteries
- Weatherproof storage case
- Calibrated to ISO 17025 standards



PNEUMATIC



ELECTRONIC



BATTERY



ELECTRIC



AUDIT EQUIPMENT



B-RAD XTREME

NEW!



DISPLAY

CASE

Durable, light weight,
shock proof. Designed
to protect your
RAD investment.



All New Tool with Extreme Battery-Powered Torque!

BATTERY



The all-new B-RAD Xtreme (B-RAD X) raises the bar for torque range capacity with a battery tool, maxing out at an impressive 11,000 ft. lbs./ 15,000 Nm. – making the B-RAD X officially the biggest cordless torque tool on the market. Plus, with 4% accuracy this tool will stand up to the toughest scrutiny. The B-RAD X captures attention with its sleek new white design and rubber handle paired with RAD Torque's patented and world-renowned gearbox technology.

MODELS

- B-RAD X 5,000 ft. lbs./ 7,000 Nm
- B-RAD X 8,000 ft. lbs./ 10,000 Nm
- B-RAD X 11,000 ft. lbs./ 15,000 Nm

ACCESSORIES



SOFT SLING

Great for horizontal or vertical applications and allows the tool to easily pivot between these two orientations.



TOP HANDLE

The top handle is intended for horizontal applications, or applications that can tolerate the extra envelope this adds to the tool.



REAR HANDLE

The rear handle is intended for vertical applications, or for use in conjunction with the sling in horizontal applications to provide a better leverage point over just the handle by itself.

FEATURES

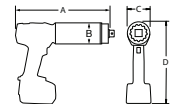
- Brushless DC motor for added durability and accuracy
- Redesigned anti-fatigue trigger switch
- Standard hand-guard for added operator protection
- Two-hand start options to prevent hand injuries
- Battery latch lock to protect batteries from falling
- 4-button interface with high-contrast LED display provides feedback during operation.

IMPERIAL

| PART NUMBER | TOOL MODEL | DRIVE SIZE | TORQUE (FT LBS) | | RPM | WEIGHT (lbs) | DIMENSION A (in) | DIMENSION B (in) | DIMENSION C (in) | DIMENSION D (in) |
|-------------|--------------|------------|-----------------|-------|-----|--------------|------------------|------------------|------------------|------------------|
| | | | LOW | HIGH | | | | | | |
| 30656 | B-RAD X 5000 | 1.5" | 500 | 5000 | 2.4 | 23 | 12.5 | 3.75 | 3.75 | 14.25 |
| 30658 | B-RAD X 8000 | 1.5" | 740 | 8000 | 1.7 | 30 | 13.75 | 4.25 | 4.25 | 14.5 |
| 30660 | B-RAD X 11K* | 1.5" | 1100 | 11000 | 1.2 | 42 | 15.25 | 5 | 5 | 14.75 |

METRIC

| PART NUMBER | TOOL MODEL | DRIVE SIZE | TORQUE (Nm) | | RPM | WEIGHT (Kg) | DIMENSION A (mm) | DIMENSION B (mm) | DIMENSION C (mm) | DIMENSION D (mm) |
|-------------|----------------|------------|-------------|-------|-----|-------------|------------------|------------------|------------------|------------------|
| | | | LOW | HIGH | | | | | | |
| 30657 | B-RAD X 7000-M | 1.5" | 700 | 7000 | 2.4 | 10.5 | 318 | 95 | 95 | 362 |
| 30659 | B-RAD X 10K-M | 1.5" | 1000 | 10850 | 1.7 | 13.8 | 349 | 108 | 108 | 369 |
| 30661 | B-RAD X 15K-M* | 1.5" | 1500 | 15000 | 1.2 | 19.3 | 387 | 127 | 127 | 375 |



Accuracy of +/-4%, Repeatability of +/-2% | *Also available in a 2.5" square drive.

B-RAD SELECT



DISPLAY

Torque ranges up to 5000 ft. lbs. / 7000 Nm

BATTERY



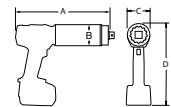
The B-RAD Select Series offers higher speed and longer battery life while incorporating a new torque display with buttons. The B-RAD Select allows the user to easily select the target torque. Patented Product.

FEATURES

- Digital torque settings, able to increase or decrease the value by 10 ft. lbs./ 10 Nm
- Torque ranges up to 5,000 ft. lbs./ 7,000 Nm
- Equipped with the latest lithium-ion technology
- Suitable for pre-torque and service jobs where electricity or compressed air are not available
- Longer battery life

CASE

Durable, light weight, shock proof. Designed to protect your RAD investment.



IMPERIAL

| PART NUMBER | TOOL MODEL | DRIVE SIZE | TORQUE (ft. lbs.) LOW | TORQUE (ft. lbs.) HIGH | RPM | WEIGHT (lbs.) | DIMENSION A | DIMENSION B | DIMENSION C | DIMENSION D |
|-------------|---------------------|------------|-----------------------|------------------------|------|---------------|-------------|-------------|-------------|-------------|
| 28283 | B-RAD SELECT 500 | 0.75" | 130 | 500 | 21.5 | 7.7 | 9.1" | 2.5" | 2.65" | 10.3" |
| 28285 | B-RAD SELECT 1000 | 0.75" | 200 | 1000 | 10.5 | 7.8 | 9.1" | 2.5" | 2.65" | 10.3" |
| 28286 | B-RAD SELECT 1000-2 | 0.75" | 400 | 1000 | 71 | 9.4 | 11" | 2.5" | 2.65" | 10.3" |
| 28287 | B-RAD SELECT 1500 | 1.0" | 300 | 1500 | 6 | 8.9 | 9.6" | 2.7" | 2.7" | 10.3" |
| 28288 | B-RAD SELECT 1500-2 | 1.0" | 300 | 1500 | 19.5 | 10.7 | 11.75" | 2.7" | 2.7" | 10.3" |
| 28289 | B-RAD SELECT 3000 | 1.0" | 600 | 3000 | 3 | 13.3 | 11.2" | 3.2" | 3.2" | 10.5" |
| 28290 | B-RAD SELECT 3000-2 | 1.0" | 600 | 3000 | 20 | 14.7 | 13.25" | 3.2" | 3.2" | 10.5" |
| 28291 | B-RAD SELECT 5000 | 1.5" | 1000 | 5000 | 2.1 | 19.3 | 11.6" | 3.75" | 3.75" | 10.7" |

METRIC

| PART NUMBER | TOOL MODEL | DRIVE SIZE | TORQUE (Nm) LOW | TORQUE (Nm) HIGH | RPM | WEIGHT (Kg) | DIMENSION A (mm) | DIMENSION B (mm) | DIMENSION C (mm) | DIMENSION D (mm) |
|-------------|-----------------------|------------|-----------------|------------------|------|-------------|------------------|------------------|------------------|------------------|
| 28264 | B-RAD SELECT 700-M | 0.75" | 170 | 700 | 21.5 | 3.5 | 231 | 63 | 67 | 262 |
| 28266 | B-RAD SELECT 1400-M | 0.75" | 270 | 1400 | 10.5 | 3.5 | 231 | 63 | 67 | 262 |
| 28267 | B-RAD SELECT 1400-2-M | 0.75" | 540 | 1400 | 71 | 4.3 | 279 | 63 | 67 | 262 |
| 28268 | B-RAD SELECT 2000-M | 1.0" | 400 | 2000 | 6 | 4.0 | 244 | 69 | 69 | 262 |
| 28269 | B-RAD SELECT 2000-2-M | 1.0" | 400 | 2000 | 19.5 | 4.9 | 298 | 69 | 69 | 262 |
| 28270 | B-RAD SELECT 4000-M | 1.0" | 800 | 4000 | 3 | 6.0 | 285 | 81 | 81 | 266 |
| 28271 | B-RAD SELECT 4000-2-M | 1.0" | 800 | 4000 | 20 | 6.7 | 337 | 81 | 81 | 266 |
| 28272 | B-RAD SELECT 7000-M | 1.5" | 1350 | 7000 | 2.1 | 8.8 | 295 | 95 | 95 | 272 |

Accuracy of +/-5%, Repeatability of +/-2%

B-RAD SELECT OFFSET



DISPLAY



The B-RAD Select with an offset gearbox for tight spaces

BATTERY



The B-RAD Select Offset offers more flexibility for those tight spaces. The design is meant to allow the tool to get into spaces, specifically flanges, where there isn't enough overhead clearance for most pistol grip tools. An excellent battery-powered alternative for flanges that only hydraulics could fit in. Patented Product.

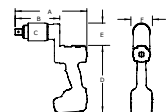
FEATURES

- Now with digital torque settings, able to increase or decrease the value by 10 ft. lbs./ 10 Nm
- Torque ranges up to 5,000 ft. lbs./ 7,000 Nm
- Equipped with the latest lithium-ion technology.
- Suitable for pre-torque and service jobs where electricity or compressed air are not available.
- Longer battery life

CASE

Durable, light weight, shock proof. Designed to protect your RAD investment.

IMPERIAL



| PART NUMBER | TOOL MODEL | DRIVE SIZE | TORQUE (ft. lbs.) | | RPM | WEIGHT (lbs.) | DIMENSION A | DIMENSION B | DIMENSION C | DIMENSION D | DIMENSION E | DIMENSION F |
|-------------|--------------------------|------------|-------------------|------|------|---------------|-------------|-------------|-------------|-------------|-------------|-------------|
| | | | LOW | HIGH | | | | | | | | |
| 30002 | B-RAD SELECT OFFSET 500 | 0.75" | 130 | 500 | 21.5 | 8.7 | 10.2" | 6.1" | 2.5" | 10.3" | 3.3" | 3.3" |
| 29572 | B-RAD SELECT OFFSET 1000 | 0.75" | 200 | 1000 | 10.5 | 8.8 | 10.3" | 6.1" | 2.5" | 10.3" | 3.3" | 3.3" |
| 30004 | B-RAD SELECT OFFSET 1500 | 1.0" | 300 | 1500 | 6 | 9.9 | 10.9" | 6.8" | 2.7" | 10.3" | 3.4" | 3.3" |
| 30006 | B-RAD SELECT OFFSET 3000 | 1.0" | 600 | 3000 | 3 | 14.3 | 12.3" | 8.2" | 3.2" | 10.3" | 3.6" | 3.3" |
| 30008 | B-RAD SELECT OFFSET 5000 | 1.5" | 1000 | 5000 | 2.1 | 20.3 | 13.2" | 9.1" | 3.7" | 10.3" | 3.9" | 3.3" |

METRIC

| PART NUMBER | TOOL MODEL | DRIVE SIZE | TORQUE (Nm) | | RPM | WEIGHT (Kg) | DIMENSION A (mm) | DIMENSION B (mm) | DIMENSION C (mm) | DIMENSION D (mm) | DIMENSION E (mm) | DIMENSION F (mm) |
|-------------|----------------------------|------------|-------------|------|------|-------------|------------------|------------------|------------------|------------------|------------------|------------------|
| | | | LOW | HIGH | | | | | | | | |
| 30003 | B-RAD SELECT OFFSET 700-M | 0.75" | 170 | 700 | 21.5 | 3.9 | 260 | 155 | 63 | 262 | 83 | 83 |
| 29574 | B-RAD SELECT OFFSET 1400-M | 0.75" | 270 | 1400 | 10.5 | 3.9 | 260 | 165 | 63 | 262 | 83 | 83 |
| 30005 | B-RAD SELECT OFFSET 2000-M | 1.0" | 400 | 2000 | 6 | 4.4 | 277 | 172 | 69 | 262 | 86 | 83 |
| 30007 | B-RAD SELECT OFFSET 4000-M | 1.0" | 800 | 4000 | 3 | 6.4 | 312 | 208 | 81 | 262 | 92 | 83 |
| 30009 | B-RAD SELECT OFFSET 7000-M | 1.5" | 1350 | 7000 | 2.1 | 9.2 | 335 | 230 | 95 | 262 | 100 | 83 |

Accuracy of +/-5%, Repeatability of +/-2%

DIGITAL B-RAD



DISPLAY

Ideal for applications where compressed air is not available

BATTERY



Digital B-RAD is the world's first digital, cordless, and lithium-ion battery tool on the market. With advanced patented technology containing digital display and single increment torque settings.

FEATURES

- Available with torque and angle option
- Programmable pre-set torque settings
- Latest lithium-ion 18V battery technology
- High accuracy of +/-5%
- Automatic 2-speed gearbox
- Patented product

CASE

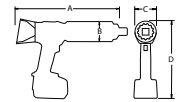
Durable, light weight, shock proof. Designed to protect your RAD investment.



| PART NUMBER | DESCRIPTION |
|-------------|---------------------|
| 26400 | DB-RAD ANGLE OPTION |

IMPERIAL

| PART NUMBER | TOOL MODEL | DRIVE SIZE | TORQUE (ft. lbs.) LOW HIGH | RPM | WEIGHT (lbs.) | NOISE LEVEL | DIMENSION A | DIMENSION B | DIMENSION C | DIMENSION D |
|-------------|---------------|------------|-------------------------------|-----|---------------|-------------|-------------|-------------|-------------|-------------|
| 21779 | DB-RAD 500-2 | 0.75" | 50 500 | 59 | 11 | 80 db | 12.67" | 2.5" | 2.5" | 10.25" |
| 21783 | DB-RAD 1000-2 | 0.75" | 100 1000 | 19 | 11.6 | 80 db | 13" | 2.5" | 2.5" | 10.25" |
| 21787 | DB-RAD 1500-2 | 1.0" | 150 1500 | 17 | 11.8 | 80 db | 13" | 2.7" | 2.7" | 10.50" |
| 24965 | DB-RAD 3000-2 | 1.0" | 300 3000 | 13 | 19.5 | 80 db | 15.2" | 3.2" | 3.2" | 10.5" |



METRIC

| PART NUMBER | TOOL MODEL | DRIVE SIZE | TORQUE (Nm) LOW HIGH | RPM | WEIGHT (Kg) | NOISE LEVEL | DIMENSION A (mm) | DIMENSION B (mm) | DIMENSION C (mm) | DIMENSION D (mm) |
|-------------|-----------------|------------|-------------------------|-----|-------------|-------------|------------------|------------------|------------------|------------------|
| 22876 | DB-RAD 700-2-M | 0.75" | 70 700 | 59 | 5.0 | 80 db | 321 | 63 | 63 | 279 |
| 22878 | DB-RAD 1400-2-M | 0.75" | 140 1400 | 19 | 5.2 | 80 db | 330 | 63 | 63 | 279 |
| 22880 | DB-RAD 2000-2-M | 1.0" | 200 2000 | 17 | 5.3 | 80 db | 330 | 68 | 68 | 279 |
| 24966 | DB-RAD 4000-2-M | 1.0" | 400 4000 | 9 | 7.1 | 80 db | 398 | 81 | 81 | 279 |

Accuracy of +/-5%, Repeatability of +/-2%

V-RAD SELECT

SERIES

LIGHTWEIGHT + COMPACT ELECTRIC POWERED

V-RAD Select Series offers a lightweight electric torque wrench, with feature designed to delivery accuracy in an easy-to-use tool.

INCLUDED ACCESSORIES

- All V-RAD Electrical Series Tool Includes:
- Reaction arm & retaining ring
- Weatherproof storage case
- Calibrated to ISO 17025 standards



PNEUMATIC



ELECTRONIC



BATTERY



ELECTRIC



AUDIT EQUIPMENT



V-RAD SELECT



Quick adjust torque with equal power in forward and reverse

ELECTRIC



V-RAD Select electric torque wrench is used for the installation or removal of heavy-duty fasteners where accuracy, power, and safety are required. Quick adjust torque settings. Equal power in forward and reverse.

FEATURES

- Torque ranges up to 3,000 ft. lbs./ 4,000 Nm
- Digital torque settings to increase and decrease the value by 10 ft. lbs./ 10 Nm
- Available in both 120V or 230V

CASE

Durable, light weight, shock proof.
Designed to protect your RAD investment.



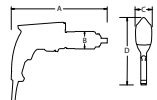
IMPERIAL

| PART NUMBER | TOOL MODEL | DRIVE SIZE | TORQUE (ft. lbs.) LOW | TORQUE (ft. lbs.) HIGH | RPM | WEIGHT (lbs.) | DIMENSION A | DIMENSION B | DIMENSION C | DIMENSION D |
|-------------|-------------------|------------|-----------------------|------------------------|-----|---------------|-------------|-------------|-------------|-------------|
| 25628 | V-RAD SELECT 1000 | 0.75" | 100 | 1000 | 8.8 | 8.6 | 12" | 2.5" | 2.9" | 8" |
| 25629 | V-RAD SELECT 1500 | 1.0" | 150 | 1500 | 5.7 | 9.6 | 12.25" | 2.7" | 2.9" | 8" |
| 25631 | V-RAD SELECT 3000 | 1.0" | 300 | 3000 | 2.7 | 13.7 | 13.5" | 3.1" | 3.1" | 8" |

METRIC

| PART NUMBER | TOOL MODEL | DRIVE SIZE | TORQUE (Nm) LOW | TORQUE (Nm) HIGH | RPM | WEIGHT (Kg) | DIMENSION A (mm) | DIMENSION B (mm) | DIMENSION C (mm) | DIMENSION D (mm) |
|-------------|---------------------|------------|-----------------|------------------|-----|-------------|------------------|------------------|------------------|------------------|
| 25633 | V-RAD SELECT 1400-M | 0.75" | 140 | 1400 | 8.8 | 3.9 | 305 | 64 | 74 | 203 |
| 25634 | V-RAD SELECT 2000-M | 1.0" | 200 | 2000 | 5.7 | 5.9 | 311 | 69 | 74 | 203 |
| 25636 | V-RAD SELECT 4000-M | 1.0" | 400 | 4000 | 2.7 | 6.2 | 343 | 79 | 79 | 203 |

Accuracy of +/-5%, Repeatability of +/-2%



RAD AUDIT EQUIPMENT

SERIES

INSTANT TORQUE READ-OUT

Accurate and reliable torque output starts with calibration. That's why RAD Torque is using its state-of-the-art labs to build torque transducers and audit equipment to ensure that your RAD tools are operating perfectly, whether in a calibration lab or during a job - even directly on the application. RAD Calibration Systems are used by service centers around the world, and the patented RAD Smart Socket™ can be used to audit the torque output of any continuous output torque tool, replacing the standard socket and measuring torque precisely where it's applied!

INCLUDED ACCESSORIES

- Weatherproof storage case
- Charger and USB cord
- Calibration certificate to ISO 17025



PNEUMATIC



ELECTRONIC



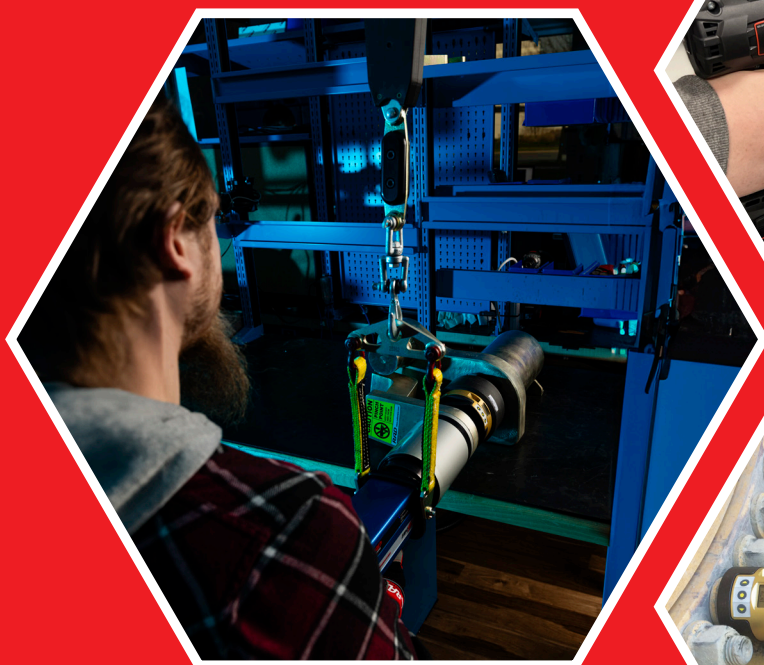
BATTERY



ELECTRIC



AUDIT EQUIPMENT



B-RAD S



DISPLAY

Advanced on-the-go auditing, at your fingertips

AUDIT EQUIPMENT



The B-RAD S auditing tool, leveraging strain gauge technology, features a built-in transducer for real-time torque measurements, ensuring on-the-spot accuracy. It excels in bolt auditing applications, thanks to the integrated "prove" mode, allowing operators to check previously tightened bolts without the risk of over-torquing.

A must-have for on-the-go auditing, the B-RAD S torque wrench instills unmatched confidence in bolt tightening. With torque and angle capabilities, Bluetooth connectivity, torque check function, and automatic reaction arm release, it guarantees precise and reliable torque applications. Tailored for professionals in various industries, it seamlessly combines mobility with precision, delivering a flawless auditing experience and the assurance of securely tightened bolts.

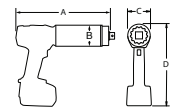
FEATURES

- Torque range up to 5,000 ft. lbs./ 7,000 Nm
- Longer battery life
- Bolt counter
- Brushless motor
- Password protection
- Built-in transducer

CASE

Durable, light weight, shock proof. Designed to protect your RAD investment.

IMPERIAL



| PART NUMBER | TOOL MODEL | DRIVE SIZE | TORQUE (ft. lbs.) LOW HIGH | RPM | WEIGHT (lbs.) | NOISE LEVEL | DIMENSION A | DIMENSION B | DIMENSION C | DIMENSION D |
|-------------|--------------|------------|-------------------------------|-----|---------------|-------------|-------------|-------------|-------------|-------------|
| 31800 | B-RAD S 500 | 0.75" | 50 500 | 21 | 9.2 | 85 | 12.25" | 2.48" | 2.75" | 10" |
| 31802 | B-RAD S 1000 | 0.75" | 100 1000 | 9.6 | 9.4 | 85 | 12.25" | 2.48" | 2.75" | 10" |
| 31804 | B-RAD S 1500 | 1.0" | 150 1500 | 5.6 | 10.8 | 85 | 12.63" | 2.7" | 2.75" | 10" |
| 31806 | B-RAD S 3000 | 1.0" | 300 3000 | 3 | 15.9 | 85 | 13.25" | 3.18" | 3.18" | 10.13" |
| 31808 | B-RAD S 5000 | 1.5" | 500 5000 | 1.9 | 21.7 | 85 | 14.25" | 3.74" | 3.74" | 10.5" |

METRIC

| PART NUMBER | TOOL MODEL | DRIVE SIZE | TORQUE (Nm) LOW HIGH | RPM | WEIGHT (Kg) | NOISE LEVEL | DIMENSION A (mm) | DIMENSION B (mm) | DIMENSION C (mm) | DIMENSION D (mm) |
|-------------|----------------|------------|-------------------------|-----|-------------|-------------|------------------|------------------|------------------|------------------|
| 31801 | B-RAD S 700-M | 0.75" | 70 700 | 21 | 4.2 | 85 | 311 | 63 | 70 | 254 |
| 31803 | B-RAD S 1400-M | 0.75" | 135 1400 | 9.6 | 4.3 | 85 | 311 | 63 | 70 | 254 |
| 31805 | B-RAD S 2000-M | 1.0" | 200 2000 | 5.6 | 4.9 | 85 | 321 | 69 | 70 | 254 |
| 31807 | B-RAD S 4000-M | 1.0" | 400 4000 | 3.0 | 7.2 | 85 | 337 | 81 | 81 | 257 |
| 31809 | B-RAD S 7000-M | 1.5" | 700 7000 | 1.9 | 9.8 | 85 | 362 | 95 | 95 | 267 |

Accuracy of +/-5%, Repeatability of +/-2%

RAD SMART SOCKETS™



ANDROID APP ON
Google play



Strain gauge technology measures torque with instant read-out

AUDIT EQUIPMENT



RAD Smart Sockets™ use RAD Torque's transducer technology combined with custom sockets to measure the actual torque applied to the bolt during a torque cycle. Its compact size and innovative technology make the Smart Socket™ a perfect audit tool for inspecting bolted joints and it can function as a calibration device for various torque tools. Patented product.

FEATURES

- Measures and displays peak torque
- Full data collection - export to email by PDF, XLS, CSV
- View in real time via Bluetooth onto your smartphone or tablet

CASE

Durable, light weight, shock proof. Designed to protect your RAD investment.



IMPERIAL

| SMART SOCKET™ SERIES | PART NUMBER | SOCKET HEX SIZE | DRIVE SIZE | WEIGHT (lbs.) | DIMENSION (in) HEIGHT A | DIAMETER B |
|---|-------------|-----------------|------------|---------------|----------------------------|------------|
| SMART SOCKET™ 1500/2000-M (Imperial range: 150-1500) | 25448 | 1-1/2" (38mm) | 1" | 2.96 | 3.42" | 2.83" |
| | 22157 | 1-3/4" | 1" | 2.85 | 3.42" | 2.83" |
| SMART SOCKET™ 3400/4600-M (Imperial range: 340-3400) | 22110 | 1-7/8" | 1" | 4.05 | 3.52" | 3.39" |
| | 24124 | 2.0" (51mm) | 1" | 3.72 | 3.52" | 3.39" |
| | 29997 | 2-1/16" | 1" | 3.89 | 3.60" | 3.39" |
| | 30211 | 2-1/4" (57mm) | 1" | 3.75 | 3.64" | 3.39" |
| SMART SOCKET™ 8000/10800-M (Imperial range: 800-8000) | 30212 | 2-5/8" (67mm) | 1.5" | 8.04 | 4.50" | 4.13" |
| | 28722 | 2-3/4" (70mm) | 1.5" | 8.28 | 4.75" | 4.13" |
| | 21915 | 3.0" (76mm) | 1.5" | 9.76 | 4.75" | 4.53" |
| SMART SOCKET™ 12000/16200-M (Imperial range: 1200-12000) | 27645 | 3-3/4" (95mm) | 1.5" | 13.3 | 5.21" | 5.30" |
| | 32405 | 4-1/8" (105mm) | 1.5" | 16 | 5.20" | 5.95" |
| | 27290 | 4-5/8" | 1.5" | 17.3 | 5.45" | 6.40" |
| | 27289 | 3 7/8" | 1.5" | 17.1 | 5.45" | 5.75" |
| SMART SOCKET 18000/24000-M* (Imperial range: 1800-18000) | 33773 | 3 7/8" | 2.5" | 21 | 6.50" | 5.71" |

METRIC

| SMART SOCKET™ SERIES | PART NUMBER | SOCKET HEX SIZE | DRIVE SIZE | WEIGHT (Kg) | DIMENSION (mm) HEIGHT A | DIAMETER B |
|---|-------------|------------------|------------|-------------|----------------------------|------------|
| SMART SOCKET™ 1500/2000-M (Metric range: 200-2000) | 20879 | 33mm | 1" | 1.2 | 100 | 72 |
| | 21363 | 36mm | 1" | 1.2 | 87 | 72 |
| | 22158 | 41mm (1-5/8") | 1" | 1.2 | 87 | 72 |
| | 20880 | 46mm (1-13/16") | 1" | 1.2 | 87 | 72 |
| SMART SOCKET™ 3400/4600-M (Metric range: 460-4600) | 20881 | 50mm | 1" | 1.5 | 89 | 86 |
| | 20882 | 55mm | 1" | 1.5 | 89 | 86 |
| | 20883 | 60mm | 1" | 1.5 | 89 | 86 |
| SMART SOCKET™ 8000/10800-M (Metric range: 1100-10800) | 23690 | 65mm (2-9/16") | 1.5" | 4 | 121 | 115 |
| | 28722 | 70mm (2-3/4") | 1.5" | 4 | 121 | 105 |
| | 20885 | 80mm | 1.5" | 4 | 121 | 115 |
| SMART SOCKET™ 12000/16200-M (Metric range: 1600-16200) | 25657 | 90mm | 1.5" | 5.8 | 126 | 131 |
| | 25658 | 100mm (3-15/16") | 1.5" | 7.2 | 132 | 146 |

Accuracy of +/-1% | *Must be used with a deep reaction arm.

RAD CALIBRATION SYSTEMS

TRANSDUCER FEATURES

- Ranges up to 7,000 ft. lbs./ 9,500 Nm
- Screen on transducer allows for convenient reading
- Connect to RAD Torque Transducer Software via your computer or tablet
- Classified to BS 7882:2017 as Class 1 or better for the primary range (+/-0.5% of reading from 20% to 100% of full scale)

Small calibration system



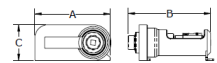
TRANSDUCER



SMALL CALIBRATION SYSTEM

IMPERIAL

| PART NUMBER | DESCRIPTION | TORQUE (ft. lbs.) | | DRIVE SIZE | WEIGHT (lbs.) | DIMENSION A | DIMENSION B | DIMENSION C |
|-------------|-----------------------------|-------------------|------|------------|---------------|-------------|-------------|-------------|
| | | LOW | HIGH | | | | | |
| 23442 | RAD CALIBRATION SYSTEM 1500 | 75 | 1500 | 1.0" | 4 | 11.75" | 11.53" | 5.50" |
| 23443 | RAD CALIBRATION SYSTEM 3500 | 175 | 3500 | 1.5" | 10 | 14.50" | 13.53" | 7.00" |
| 23444 | RAD CALIBRATION SYSTEM 7000 | 350 | 7000 | 1.5" | 11 | 14.50" | 13.53" | 7.00" |



METRIC

| PART NUMBER | DESCRIPTION | TORQUE (Nm) | | DRIVE SIZE | WEIGHT (Kg) | DIMENSION A (mm) | DIMENSION B (mm) | DIMENSION C (mm) |
|-------------|-----------------------------|-------------|------|------------|-------------|------------------|------------------|------------------|
| | | LOW | HIGH | | | | | |
| 23442 | RAD CALIBRATION SYSTEM 1500 | 100 | 2000 | 1.0" | 1.8 | 298 | 293 | 140 |
| 23443 | RAD CALIBRATION SYSTEM 3500 | 250 | 4750 | 1.5" | 4.5 | 368 | 344 | 178 |
| 23444 | RAD CALIBRATION SYSTEM 7000 | 475 | 9500 | 1.5" | 4.9 | 368 | 344 | 178 |

Highly accurate calibration systems

AUDIT
EQUIPMENT

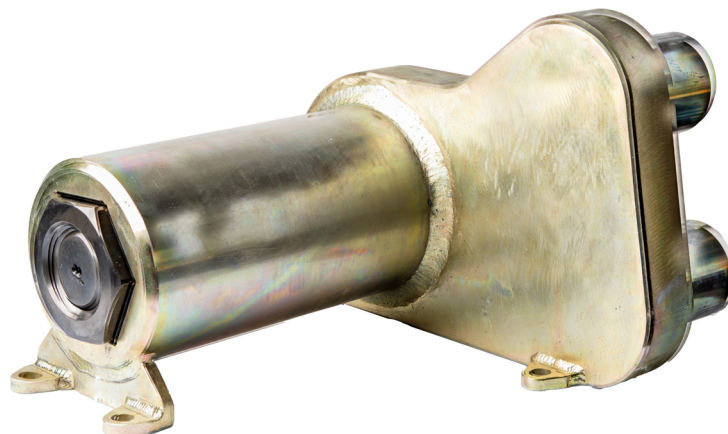


The RAD Calibration Systems have earned their place in calibration laboratories worldwide because of their high accuracy and repeatability.

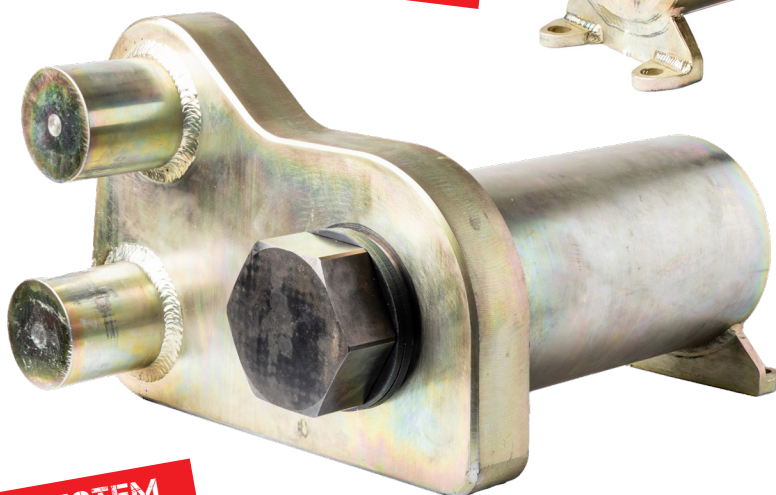
Introducing the solution for big torque tools – RAD Torque's Large Calibration Stand. With the power to calibrate tools up to a whopping 18K ft. lbs/24K Nm, precision meets extreme performance. The Large Calibration Stand is paired with RAD's Smart Sockets (12K and 18K*) to calibrate in two different sizes.

NEW!

**LARGE
CALIBRATION
SYSTEM**



LARGE CALIBRATION SYSTEM



**SYSTEM
FEATURES**

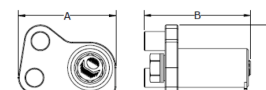
- 4340-material bolt, heat-treated for unparalleled strength and durability
- Optional 12K or 18K* Smart Sockets, delivering accurate data logging for all your calibration needs
- Secure shipping crate to protect your investment



INCLUDED 12K & 18K* SMART SOCKETS™

IMPERIAL

| PART NUMBER | DESCRIPTION | TORQUE (ft. lbs.) | | DRIVE SIZE | WEIGHT (lbs.) | DIMENSION A | DIMENSION B | DIMENSION C |
|----------------|-----------------------------|-------------------|------|---------------|------------------|----------------|----------------|----------------|
| | | LOW | HIGH | | | | | |
| 30526 | RAD 12K CALIBRATION SYSTEM | 600 | 12K | 1.5" | 235 | 15.08" | 19.70" | 10.60" |
| 33736 | RAD 18K CALIBRATION SYSTEM* | 900 | 18K | 2.5" | 235 | 15.08" | 19.70" | 10.60" |



METRIC

| PART NUMBER | DESCRIPTION | TORQUE (Nm) | | DRIVE SIZE | WEIGHT (Kg) | DIMENSION A (mm) | DIMENSION B (mm) | DIMENSION C (mm) |
|----------------|-----------------------------|-------------|------|---------------|----------------|---------------------|---------------------|---------------------|
| | | LOW | HIGH | | | | | |
| 30526 | RAD 12K CALIBRATION SYSTEM | 800 | 16K | 1.5" | 106.5 | 383 | 501 | 270 |
| 33736 | RAD 18K CALIBRATION SYSTEM* | 1200 | 24K | 2.5" | 106.5 | 383 | 501 | 270 |

*Must be used with a deep reaction arm.

ACCESSORIES

**LEADING THE BOLTING
INDUSTRY IN SAFETY**



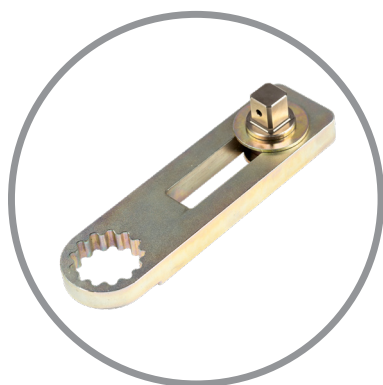
ACCESSORIES

RAD Safety

Ergonomics and safety are very important during the design phase of any new RAD tool. In addition to making the job safer through ergonomic design, we want our tools to be easy to use, powerful, accurate and very reliable. RAD believes safety features should not impede workplace efficiency and speed, but should make workers aware of the risks involved in working with powerful tools. RAD has developed a range of ergonomic and safety enhancing features.

ERGONOMIC FEATURES

- RAD's patented planetary gear reduction drive system delivers 88 times less vibration than impact wrenches.
- No risk of HAVS injuries (Hand-Arm-Vibration-Syndrome). Lower risk than impact wrenches.
- Pistol grip trigger/control reduces operator error.
- RAD's low profile reaction arm eliminates all operational load on the operator.



Reaction Arms



Trigger Guard



Hand Guards

RAD Nose Extensions

Available for most RAD models.
Please contact us for custom inquiries.

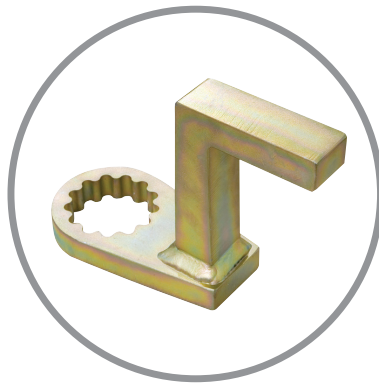


RAD Reaction Arms

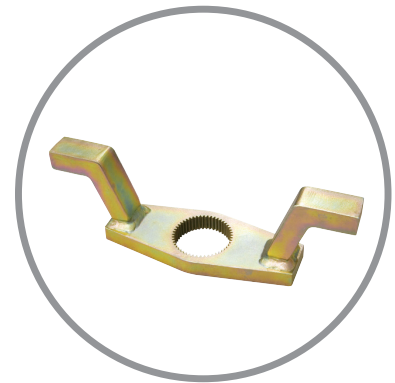
Each RAD tool includes a standard reaction arm. In addition to this, you can order the below special reaction arms to ensure correct reaction for different applications. Please consult our website for dimensions and part numbers.



**Standard
Reaction Arm**



**Deep Socket
Reaction Arm**



**Double Ended
Reaction Arm**

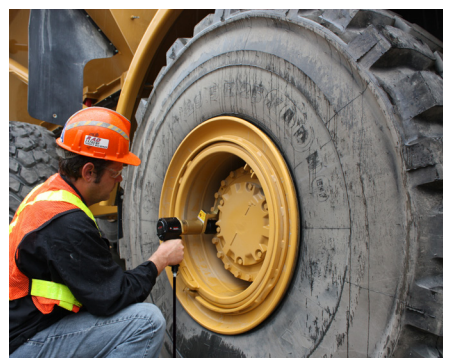
Regulator & Tool Holder

Our regulator and tool holder make it easy to carry the RAD Pneumatic tool from job to job.

FEATURES

- Offset handle for balanced carrying when the tool is stored in the storage pocket
- Comes complete with FRL and hose assembly
- High-density polypropylene construction means the tool holder will stand up to the most demanding conditions
- Lightweight – only 4 lbs./ 1.8 Kgs
- Torque chart holder for quick reference
- Accessory pocket (6" x 6" or 152 x 152 mm) allows for quick and easy access to accessories such as reaction arms, snap rings and sockets





RAD Torque Tool Limited Warranty

New Tool Warranty

Any new tool branded with the RAD name and purchased from New World Technologies Inc., or through one of its authorized distributors or agents, is warranted to the original purchaser against defects in materials and workmanship for a period of one (1) year from the date of original calibration. Electric drive components such as electric motors, switches, and batteries etc., are covered for a period of six (6) months from the date of original calibration. Under the terms of this warranty, New World Technologies Inc., at its option and F.O.B. either its factory or an authorized service center, will replace or repair for the original purchaser, free of charge, any part or parts, found upon examination by New World Technologies Inc., to be defective in material or workmanship or both. If any product or part is replaced or repaired under the terms of this warranty, that product or part will carry the remainder of the warranty from the date of original calibration.

Repaired Tool Warranty

Once a tool is beyond its new tool warranty, New World Technologies Inc., for a period of three (3) months from the date of repair, will replace or repair for the original purchaser, free of charge, any part or parts, found upon examination by New World Technologies Inc., to be defective in material or workmanship or both. If any product or part is replaced or repaired under the terms and conditions of this warranty, that product or part will carry the remainder of the warranty from the date of original repair.

To qualify for the above mentioned warranties, written notice to New World Technologies Inc. must be given immediately upon discovery of such defect, at which time New World Technologies Inc. will issue an authorization to return the tool. The defective item must promptly be returned to New World Technologies Inc. all freight charges prepaid. When returning a tool, the reaction arm/s being used with the tool must also be returned.

Exclusions from Warranty

Tools or accessories found by New World Technologies Inc.'s sole judgement to have been altered, damaged, misused, abused, badly worn due to excessive utilization, lost, or improperly maintained will NOT be covered under the terms of this warranty.

Tools returned without the reaction arm/s will not be covered under the terms of this warranty.

Consumable parts and accessories (such as extensions, reaction blanks/arms) are not covered under this warranty.

Tools that have been relabeled without prior written consent of New World Technologies Inc. will not be covered under this warranty.

Equipment and accessories not manufactured by New World Technologies Inc. (measuring equipment, etc.) are warranted only to the extent of the original manufacturer's warranty.

**There is no other express warranty. Implied warranties, including those of merchantability and fitness for a particular purpose are limited to one year from date of calibration and to the extent permitted by law. Liability for consequential damages under any and all warranties are excluded to the extent exclusion is permitted by law.*

NEW WORLD TECHNOLOGIES INC.
1.800.983.0044
INFO@RADTORQUE.COM

NOTES

NOTES

WORLDWIDE DISTRIBUTION



RAD Torque Systems works with a global group of Master Distributors to deliver our tools around the world. This worldwide distribution network ensures that you have access to our tools whenever and wherever you need them. This distribution network helps us stay engaged with customers and their needs so we can quickly adapt to changing industry and introduce new products as needed to meet these evolving demands.

Our worldwide distribution and sales network is a key component of our commitment to delivering high-quality tools and exceptional customer service.

CONTACT US AT [INFO@RADTORQUE.COM](mailto:info@radtorque.com) AND WE'LL CONNECT YOU WITH YOUR LOCAL DISTRIBUTOR!

01-2024



NEW WORLD TECHNOLOGIES INC
#100 - 30722 MARSHALL ROAD | ABBOTSFORD, BC V2T 0H9 | CANADA

RADTORQUE.COM