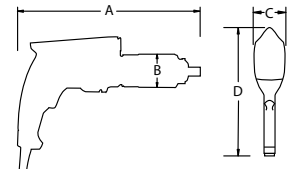


V-RAD SELECT

**Quick adjust torque settings.
Equal power in forward and reverse.**

V-RAD Select electric series are a new generation of electric torque wrenches used for the installation or removal of heavy duty fasteners where accuracy, power, and safety are required. Quick adjust torque settings. Equal power in forward and reverse.

- Now with digital torque settings, able to increase and decrease the value by 10 ft. lbs.
- Torque ranges up to 3,000 ft. lbs.
- Available in both 120V or 230V



PART NUMBER	TOOL MODEL	DRIVE SIZE	TORQUE (ft. lbs.)		RPM	WEIGHT (lbs.)	DIMENSION A	DIMENSION B	DIMENSION C	DIMENSION D
			LOW	HIGH						
25628	V-RAD SELECT 1000	0.75"	100	1000	8.8	8.6	12"	2.5"	2.9"	8"
25629	V-RAD SELECT 1500	1.0"	150	1500	5.7	9.6	12.5"	2.7"	2.9"	8"
25631	V-RAD SELECT 3000	1.0"	300	3000	2.7	13.7	13.5"	3.1"	3.1"	8"

Accuracy of +/-5%, Repeatability of +/-2%