

RAD TORQUE SYSTEMS - THERE IS A BETTER WAY



LEADING MANUFACTURER OF ADVANCED TORQUE SYSTEMS



PNEUMATIC



BATTERY



ELECTRONIC



ELECTRIC



PNEUMATIC SERIES

Gen-X .....2  
High Speed .....3  
Classic .....4  
Wheel Nut Bolting .....5



BATTERY SERIES

B Series .....6



ELECTRONIC SERIES

E Series .....7-8  
Controllers .....9



ELECTRIC SERIES

V Series .....10



ACCESSORIES

Reaction Arms .....11  
Nose Extensions .....12  
Torque Analyzers .....13

COMPANY PROFILE .....14



# RAD<sup>®</sup> GEN-X SERIES

Precision design and engineering has brought about the next generation in torque wrenches – the **RAD<sup>®</sup> GEN-X SERIES**.

Designed for extreme duty use in a variety of industries worldwide, **RAD<sup>®</sup> GEN-X SERIES** torque wrenches offer:

- ✓ The ultimate in power-to-weight ratio
- ✓ Wide torque range to suit multiple applications
- ✓ Unmatched reliability delivered by one of the most advanced engineered gear boxes on the market



## Extreme Duty Torque Wrenches for Heavy Duty Applications



RAD<sup>®</sup> 10GX

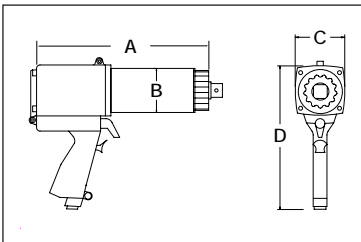


RAD<sup>®</sup> 25GX



CE RAD<sup>®</sup> 34GX

### GEN-X SERIES DIMENSIONS



*All RAD<sup>®</sup> Pneumatic Series tools include reaction arm, 12' hose & fittings and all new ergonomic regulator cage*

PART NUMBER	TOOL MODEL	DRIVE SIZE	TORQUE (ft. lbs.)		RPM	WEIGHT (lbs.)	NOISE LEVEL	DIMENSION A	DIMENSION B	DIMENSION C	DIMENSION D
			LOW	HIGH							
12814	7GX	0.75"	100	700	30	8.0	80 db	9.0"	2.5"	2.75"	9.0"
12818	10GX	0.75"	200	1000	20	8.0	80 db	9.1"	2.5"	2.75"	8.07"
12377	25GX	1.0"	500	2500	9	13.5	85 db	9.7"	3.05"	3.3"	9.5"
12356	34GX	1.0"	1000	3400	12	20.0	85 db	12.8"	3.4"	3.7"	10.4"
15328	<b>New</b> 60DX	1.5"	2000	6000	6.6	27.5	85 db	13.7"	4.0"	4.0"	10.9"
12383	85GX	1.5"	3000	8500	4.5	38.5	85 db	17.0"	4.5"	4.5"	11.0"

Visit our website for a complete up-to-date list of products.

Accuracy of +/-5%, Repeatability of +/-2%

PNEUMATIC SERIES

# RAD<sup>®</sup> HIGH SPEED SERIES

Introduced to compliment the RAD<sup>®</sup> classic series torque wrenches, **RAD<sup>®</sup> HIGH SPEED SERIES** torque wrenches offer the same reliable and dependable solution for the installation and removal of heavy-duty fasteners where accuracy, power, and safety are required. **RAD<sup>®</sup> HIGH SPEED SERIES** torque wrenches incorporate a precision engineered *high speed* gear box designed for faster run down on time sensitive bolting applications reaching speeds as high as 300 rpm.



## Extreme torque with high RPM productivity



RAD<sup>®</sup> 350SL-2

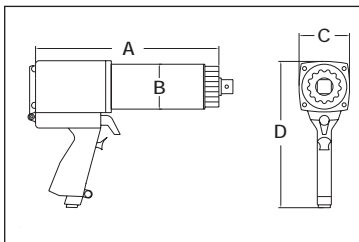


RAD<sup>®</sup> 800NG-2



RAD<sup>®</sup> 1400NG-2

### HIGH SPEED SERIES DIMENSIONS



Torque (Ft. Lb.)	Pressure (PSI)
200	30
250	37
300	45
350	52
400	60
450	68
500	76
550	85

*All RAD<sup>®</sup> Pneumatic Series tools include a laminated torque/PSI chart, assuring maximum accuracy and performance*

PART NUMBER	TOOL MODEL	DRIVE SIZE	TORQUE (ft. lbs.)		RPM	WEIGHT (lbs.)	NOISE LEVEL	DIMENSION A	DIMENSION B	DIMENSION C	DIMENSION D
			LOW	HIGH							
12317	350SL-2	0.75"	100	350	300	8.3	80 db	9.0"	2.4"	2.75"	8.75"
12322	550SL-2	0.75"	200	550	170	9.0	80 db	9.5"	2.4"	2.75"	8.75"
12339	1400NG-2	1.0"	500	1400	69	16.0	85 db	11.5"	3.0"	3.3"	9.5"
12343	1800NG-2	1.0"	700	1800	53	16.0	85 db	11.5"	3.0"	3.3"	9.5"
12349	30-2	1.0"	1400	3000	55	25.0	85 db	15.7"	3.1"	3.4"	10.4"

Visit our website for a complete up-to-date list of products.

Accuracy of +/-5%, Repeatability of +/-2%

# RAD<sup>®</sup> CLASSIC SERIES

**RAD<sup>®</sup> CLASSIC SERIES** torque wrenches offer a reliable and dependable solution for the installation and removal of heavy-duty fasteners in a variety of industries that require accuracy, power, and safety.

- ✓ *PATENTED planetary gear reduction drive system delivering one of the highest power-to-weight ratios of any pneumatic controlled bolting system*
- ✓ *Smooth continuous flow of controlled torque eliminating destructive hammering*
- ✓ *Lightweight ergonomic pistol grip design reducing operator strain and injury; resulting in increased productivity*
- ✓ *Controlled torque - accuracy of +/-5%, and repeatability of +/-2%*



*Unmatched accuracy through precision engineering and design*

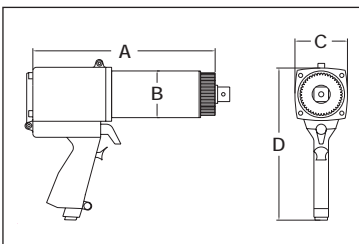


RAD<sup>®</sup> 350SL



RAD<sup>®</sup> 1800NG

## CLASSIC SERIES DIMENSIONS



*All RAD<sup>®</sup> Pneumatic Series tools include reaction arm, 12' hose & fittings and all new ergonomic regulator cage*



CE RAD<sup>®</sup> 50

PART NUMBER	TOOL MODEL	DRIVE SIZE	TORQUE (ft. lbs.) LOW HIGH	RPM	WEIGHT (lbs.)	NOISE LEVEL	DIMENSION A	DIMENSION B	DIMENSION C	DIMENSION D
12316	350SL	0.75"	50 350	65	6.0	80 db	6.6"	2.4"	2.75"	8.75"
12321	550SL	0.75"	100 550	35	6.6	80 db	7.3"	2.4"	2.75"	8.75"
12338	1400NG	1.0"	300 1400	15	12.5	85 db	9.0"	3.0"	3.3"	9.5"
12342	1800NG	1.0"	500 1800	13	12.5	85 db	9.0"	3.0"	3.3"	9.5"
12348	30	1.0"	1000 3000	14	20.5	85 db	13.2"	3.1"	3.7"	10.4"
12357	50	1.5"	1500 5000	8	28.0	85 db	13.9"	4.0"	3.7"	10.4"

Visit our website for a complete up-to-date list of products.

PNEUMATIC SERIES

# RAD® WHEEL NUT BOLTING SERIES

The **RAD® WHEEL NUT BOLTING SERIES** and the **RAD® OTR MINING SERIES** were designed with one job in mind - **wheel nut bolting** for light and heavy duty applications where torque control is a must. The extended nose with available custom reaction arms make this tool ideal for reaching wheel nut studs that are recessed where tool clearance is a problem.

- ✓ Extend drive and reaction for safety and ergonomics
- ✓ Removable custom reaction arms designed to fit virtually any wheel configuration



RAD® 7GX-R

Custom Reaction Arms Available

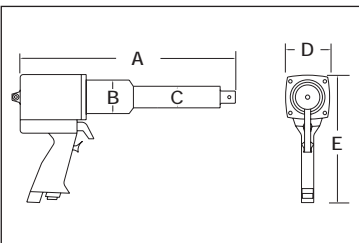
PART NUMBER	TOOL MODEL	DRIVE SIZE	TORQUE (ft. lbs.)		RPM	WEIGHT (lbs.)	NOISE LEVEL	DIMENSION A	DIMENSION B	DIMENSION D	DIMENSION E
			LOW	HIGH							
13495	7GX-R	0.75"	150	700	115	12.0	80 db	14.5"	2.50"	2.75"	9.0"

# RAD® OTR MINING SERIES

#1 Choice for Mines Worldwide



GX-R SERIES DIMENSIONS



The **RAD® OTR MINING SERIES** of wheel nut bolting systems were developed exclusively for extreme duty maintenance of mining haul trucks from 50-400 ton capacities and front end loaders. The extended nose allows safe access of virtually all wheel configurations found on today's heavy equipment.



RAD® 1400NGX-R



Custom Reaction Arms Available

PART NUMBER	TOOL MODEL	DRIVE SIZE	TORQUE (ft. lbs.)		RPM	WEIGHT (lbs.)	NOISE LEVEL	DIMENSION A	DIMENSION B	DIMENSION C	DIMENSION D	DIMENSION E
			LOW	HIGH								
13478	1400NGX-R	1.0"	300	1400	14	27.5	85 db	21.5"	3.0"	2.0"	3.3"	9.5"
13477	1800NGX-R	1.0"	500	1800	10	27.5	85 db	21.5"	3.0"	2.0"	3.3"	9.5"

Visit our website for a complete up-to-date list of products.

Accuracy of +/-5%, Repeatability of +/-2%

# **RAD** BATTERY SERIES

**RAD** BATTERY SERIES torque wrenches offer unmatched power, versatility, and reliability. Incorporating our precision engineered gear boxes, their lightweight design makes these tools ideal for any application, especially where compressed air or electricity is not readily available. The **RAD** BATTERY SERIES are available in single speed and high speed models.



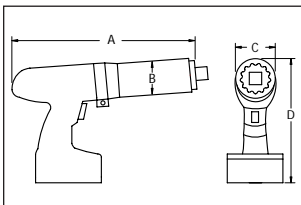
*Just imagine the freedom....*

*No Air Lines! No Power Cords! No Hassles!*

- ✓ Advanced Patented Gearbox
- ✓ Soft Start Trigger for Safety
- ✓ Ergonomic Pistol Grip Handle
- ✓ Quick Charge 18V Li-Ion Battery
- ✓ Easy View Torque Settings



## BATTERY SERIES DIMENSIONS



Patent Pending

All B-RAD tools come fully calibrated complete with:

- B-RAD Tool
- Reaction Arm and Retention Ring
- Two 18 Volt Batteries
- Battery Charger
- Calibration Chart
- Storage Case



PART NUMBER	TOOL MODEL	DRIVE SIZE	TORQUE (ft. lbs.)		WEIGHT (lbs.)	DIMENSION A	DIMENSION B	DIMENSION C	DIMENSION D
			LOW	HIGH					
16191	B-RAD 350	0.75"	100	350	8.4	8.75"	2.4"	2.8"	10.5"
16193	B-RAD 700	0.75"	300	700	9.5	10.0"	2.5"	3.0"	10.25"
16006	B-RAD 700-2	0.75"	300	700	10.6	12.62"	2.5"	3.0"	10.5"
16194	B-RAD 1300	1.0"	500	1300	13.6	11.75"	3.05"	3.0"	10.5"
16195	B-RAD 1300-2	1.0"	500	1300	15.6	13.75"	3.05"	3.0"	10.25"

Visit our website for a complete up-to-date list of products.

BATTERY SERIES

# **RAD**® E SERIES

**RAD**® E SERIES are the world's most advanced electronic pistol grip torque wrenches. They are designed to provide a high degree of accuracy and repeatability using our legendary gear box design and the precision of an electronic motor. Capable of data collection, angle measurement, accuracy of +/-3%, and torque values up to 6000 ft/lbs, **RAD** E SERIES offer an affordable solution for electronic bolting needs.

## *Precision Bolting Driven by Technology and Design*

### LIGHTER

Combining the latest advancements in ergonomic design along with an ultra-durable portable carrying case, the E Series torque system is a lightweight alternative to other bolting systems.

### FASTER

Compared to other conventional torque systems, such as hydraulic wrenches, the E-RAD electronic torque system decreases tightening times by up to 60% through the delivery of continuous torque, boosting your productivity dramatically and increasing the speed of job completion.

### STRONGER

With unsurpassed power-to-weight ratio and our legendary patented gearbox design, E Series tools offer the highest dependability and reliability in the industry.



W  
E  
C  
H  
O  
N  
O  
S  
C  
O  
N  
S  
T  
R  
U  
C  
T  
I  
O  
N

- ✓ **Push-button select torque**  
*Fast and convenient error-free digital single increment torque settings*
- ✓ **Lightweight and Ergonomic pistol grip design**  
*Advanced low-profile handle to reduce operator fatigue and increase productivity*
- ✓ **Extremely low noise level only 75db**  
*World's quietest extreme torque gun, ideal for sensitive environments and standards*
- ✓ **LED Green (Pass) or Red (Fail) indicator lights**  
*Unmistakable visual signal indicates status of torque procedure for maximum accuracy and speed*
- ✓ **Data collection capability**  
*All E Series tools come complete with data collection software allowing traceability of each torque sequence performed*



LED lights located on both sides

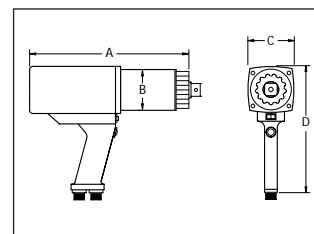


Integrated Fan Kit



Forward/Reverse Switch

**ELECTRIC SERIES DIMENSIONS**



PART NUMBER	TOOL MODEL	DRIVE SIZE	TORQUE (ft. lbs.)		WEIGHT (lbs.)	DIMENSION A	DIMENSION B	DIMENSION C	DIMENSION D
			LOW	HIGH					
14991	E-RAD 700	0.75"	100	700	12	13.25"	2.5"	3.0"	8.25"
12313	E-RAD 1200	1.0"	200	1200	15	13.9"	3.0"	3.0"	8.25"
12314	E-RAD 2000	1.0"	250	2000	18	14.33"	3.0"	3.5"	8.75"
15710	<b>New</b> E-RAD 2500 COMP	1.0"	250	2500	18	14.8"	3.0"	3.0"	8.25"
12703	E-RAD 3000	1.0"	500	3000	23.5	16.75"	3.4"	3.5"	8.75"
13992	E-RAD 4000	1.5"	800	4000	31	17.75"	4.0"	3.5"	8.75"
15952	<b>New</b> E-RAD 6000	1.5"	1500	6000	29	16.5"	4.0"	3.5"	8.75"

Visit our website for a complete up-to-date list of products.

Accuracy of +/-3%

# **RAID**® E SERIES CONTROLLERS AND OPTIONS

## **E-RAD TOUCH** Controller Case

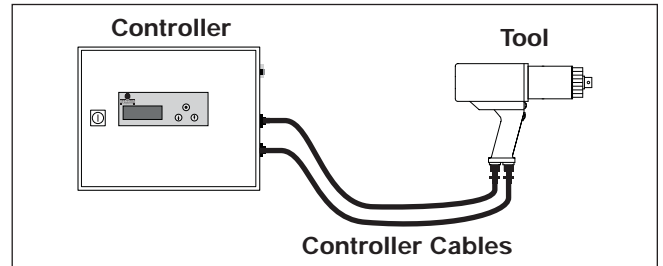


The E-RAD touch control case provides the interface for all E-RAD Tools. The touch screen allows for quick adjustments and easily selectable pre-sets.

- ✓ Touch screen - 2" X 3"
- ✓ Standard with torque and angle
- ✓ Field calibration, password protected
- ✓ Life cycle and maintenance counters
- ✓ Advanced data collection
- ✓ On tool data log viewing
- ✓ Real time clock for data logging

*All E Series tools come fully calibrated complete with:*

- E-RAD Tool
- Reaction Arm and Retention Ring
- Controller cables
- Digital Torque Controller
- Operators manual
- E-RADCAL Calibration Software



### SELECT ONE OF THE FOLLOWING CONTROLLERS

PART NUMBER	DESCRIPTION	CASE TYPE	VOLTAGE	LENGTH DIMENSION	HEIGHT DIMENSION	WIDTH DIMENSION
17026	CONTROLLER	STEEL ASSEMBLY	120	14.9"	11.8"	8.0"
16499	CONTROLLER	WEATHERPROOF ASSEMBLY	120	13.3"	6.0"	11.6"
17027	CONTROLLER	STEEL ASSEMBLY	220	14.9"	11.8"	8.0"
16500	CONTROLLER	WEATHERPROOF ASSEMBLY	220	13.3"	6.0"	11.6"

### SELECT ONE OF THE FOLLOWING CABLE LENGTHS

PART NUMBER	TOOL MODEL	CABLE LENGTH (Feet)
10984	CABLE LENGTH FROM CONTROLLER TO TOOL MODEL (standard with tool)	15
11845	CABLE LENGTH FROM CONTROLLER TO TOOL MODEL	20
11846	CABLE LENGTH FROM CONTROLLER TO TOOL MODEL	25

Visit our website for a complete up-to-date list of products.

\*E-RAD operates in standard mode if no options are selected

# RAD® V SERIES

**RAD® V SERIES** are a new generation of electric torque wrenches used for the installation or removal of heavy duty fasteners where accuracy, power, and safety are required. This series comes without the hassle of air hoses and simply runs when plugged into any electric power supply, including generators. Based on the design of our patented planetary gear reduction system, the **RAD® V SERIES** offers a smooth continuous flow of controlled torque which is adjustable through dial settings.

- ✓ **Quick adjust torque settings**  
Fast and accurate "dial a torque" for maximum versatility and efficiency
- ✓ **Soft-start vary speed trigger**  
Allows operator to safely and quickly set reaction arm before full torque is applied
- ✓ **Equal power in forward and reverse**  
Convenience and cost effective use of same tool for break away and final torque
- ✓ **Advanced ultra-durable electric motor design**  
Extreme duty designed to reduce maintenance cost and increase reliability

*Maximum versatility and efficiency...*

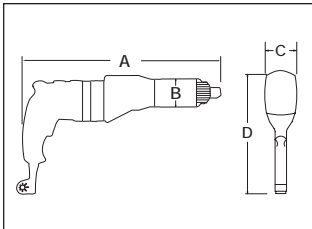


All V-RAD tools come fully calibrated complete with:

- V-RAD Tool
- Reaction Arm and Retention Ring
- Operators Manual
- Calibration Chart
- Weatherproof Storage Case



V SERIES DIMENSIONS



PART NUMBER	TOOL MODEL	DRIVE SIZE	TORQUE (ft. lbs.)		WEIGHT (lbs.)	DIMENSION A	DIMENSION B	DIMENSION C	DIMENSION D
			LOW	HIGH					
13497	V-RAD 4	0.75"	100	400	10.0	15.5"	2.5"	2.75"	8.0"
12899	V-RAD 10	0.75"	300	1000	11.0	17.25"	2.5"	2.75"	8.0"
12389	V-RAD 16	1.0"	500	1600	15.0	17.75"	3.0"	2.75"	8.0"
13501	V-RAD 23	1.0"	800	2300	15.0	18.0"	3.0"	2.75"	8.0"

Visit our website for a complete up-to-date list of products.

# REACTION ARM SELECTION CHART



\* weldable

\* weldable

TOOL SERIES	STANDARD <i>(Included with tool)</i>	DEEP SOCKET	DOUBLE ENDED ARM	BLANK	DOUBLE ENDED BLANK
RAD 7/10GX	13366	13367	13368	13364	13365
RAD 25GX	10514	10515	10516	10513	10448
RAD 34GX	11531	11534	11533	11530	11532
RAD 60DX	15375	15788	15790	15373	15789
RAD 85GX	12885	13508	13509	13505	13506

RAD 350SL	10686	10687	10688	10036	10037
RAD 550SL	14900	15923	15924	10036	10037
RAD 1400/1800	10004	10007	10009	10005	10008
RAD 30	10022	10025	10027	10024	10026
RAD 50	10039	10401	10403	10040	10402

RAD 1400/1800NGX-R	13484	13515	13516	13513	13514
RAD 7GX-R	13512	12902	13442	13773	12903

\*Reaction arms not exactly as shown (7GX-R, 1400NGX-R, 1800NGX-R)

B-RAD 350	10686	10687	10688	10036	10037
B-RAD 700	13366	13367	13368	13364	13365
B-RAD 1300	10514	10515	11533	11530	11532

E-RAD 700	13366	13367	13368	13364	13365
E-RAD 1200	10004	10007	10009	10005	10008
E-RAD 2000	10247	10395	10397	10394	10396
E-RAD 2500 COMP	18250	18251	10516	10513	10448
E-RAD 3000	11531	11534	11533	11530	11532
E-RAD 4000	10039	10401	10403	10040	10402
E-RAD 6000	16368	17643	N/A	16260	N/A

V-RAD 4	10686	10687	10688	10036	10037
V-RAD 10	13366	13367	13368	13364	13365
V-RAD 16	10004	10007	10009	10005	10008
V-RAD 23	10514	10515	10516	10513	10448

\* Please contact us if you have a specific or custom application.  
Our Engineering Department can design a reaction arm for all of your needs.  
[www.radtorque.com](http://www.radtorque.com)

Sample of Custom Reaction Arms shown below

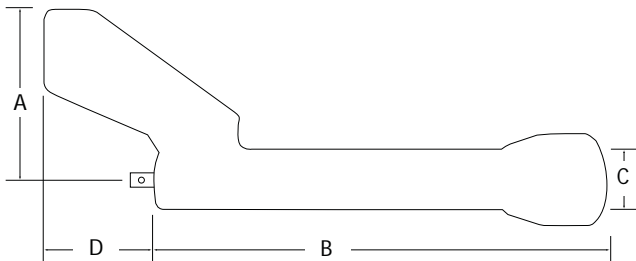


# NOSE EXTENSION SELECTION CHART



Part Number	Description	Dimension A	Dimension B	Dimension C	Dimension D
10257	RAD 1800NG 15" Nose Extension	5"	16"	2"	3.5"
10258	RAD 1800NG 18" Nose Extension	5"	18"	2"	3.5"
10259	RAD 1800NG 12" Nose Extension	5"	12.7"	2"	3.5"
12087	RAD 30 12" Nose Extension	5"	12.8"	2"	3.25"
10734	RAD 30 15" Nose Extension	5"	15.8"	2"	3.25"
10735	RAD 30 18" Nose Extension	5"	18.8"	2"	3.25"
12061	RAD 25GX 15" Nose Extension	5"	16"	2"	3.25"
12096	RAD 25GX 12" Nose Extension	5"	13"	2"	3.25"
12097	RAD 25GX 18" Nose Extension	5"	18.5"	2"	3.25"
14195	RAD 10GX 12" Nose Extension	N/A	12.75"	2.5"	N/A
14200	RAD 10GX 15" Nose Extension	N/A	15.75"	2.5"	N/A
14205	RAD 10GX 18" Nose Extension	N/A	18.75"	2.5"	N/A

10GX Nose Extensions require a reaction arm. Refer to 7GX-R Reaction Arms on previous charts.



RAD 10GX (12818), 12" nose extension (14195),  
with reaction arm (13512)

# RAD CALIBRATION SYSTEMS

ACCESSORIES



Part Number  
10787

RCA-5000  
Torque Range 500-5000ft/lb  
Accuracy +/- .25%



Part Number  
10786

RCA-3000  
Torque Range 300-3000ft/lb  
Accuracy +/- .25%



Part Number  
10785

RCA-1000  
Torque Range 100-1000ft/lb  
Accuracy +/- .25%

## ELECTRONIC SERIES

All E Series tools come fully calibrated complete with:

- E-RAD Tool
- Controller Cables
- Operator's Manual
- Reaction Arm and Retention Ring
- Digital Torque Controller
- E-RADCAL Calibration Software



E Series  
Controllers  
available  
in two case  
configurations

E-RAD Controller with torque controls and digital display enclosed in a weatherproof case for harsh environments.

E-RAD Controller with upright heavy duty steel case, top mounted torque controls and digital display.

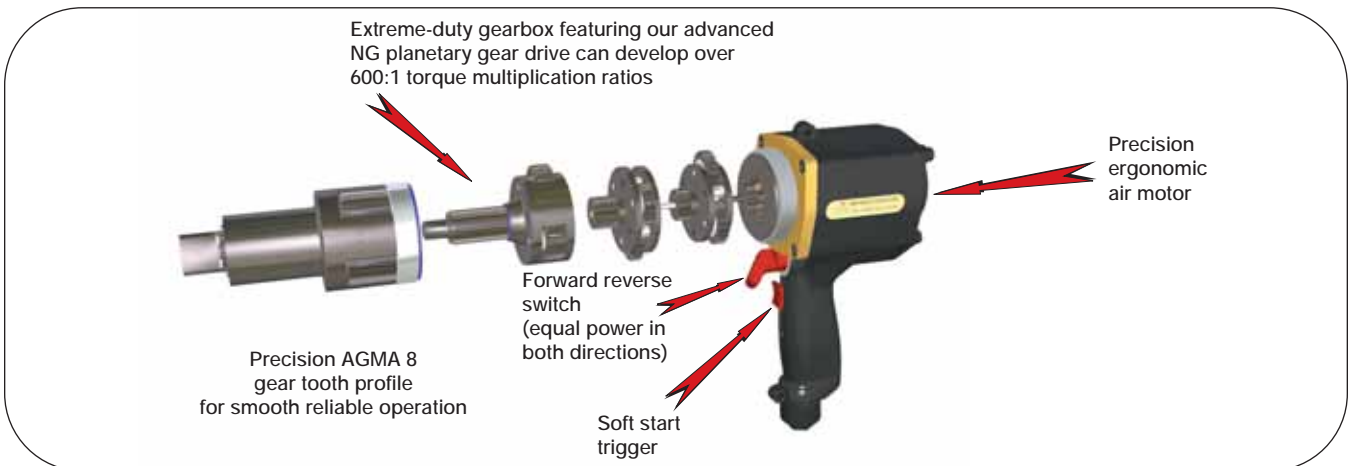
## BATTERY SERIES

All B-RAD tools come fully calibrated complete with

- B-RAD Tool
- Two 18 volt batteries
- Calibration Chart
- Reaction Arm and Retention Ring
- Battery Charger
- Storage Case



B-RAD TOOL KIT



RAD® pneumatic torque wrenches incorporate our PATENTED Planetary Gear Reduction Drive Systems to produce the highest power-to-weight ratio of any pneumatic controlled bolting system in the world today!

# 15 YEARS INCORPORATED



New World Technologies Inc. is a leading Canadian manufacturer of pneumatic, battery powered, and electronic pistol grip torque wrenches. Our advanced products have proven to be successful all over the world in such industries as oil and gas, petrochemical, mining, aerospace, and manufacturing. We continue to invest in and employ the latest technology to achieve the highest level of innovation, quality, and performance - which has resulted in multiple patents for our products. New World Technologies Inc. has designed its operations for maximum flexibility and responsiveness ensuring our customers receive outstanding service.



- 14 CNC machining centers (Okuma and HAAS systems)
- CAD and CAM processing (Solid Works and Master Cam)
- 9 gear cutting machines (working to AGMA standards)
- 3 Professional Engineers (Mechanical and Electronics)

## MAXIMUM FLEXIBILITY AND RESPONSIVENESS, ENSURING OUR CUSTOMERS RECEIVE OUTSTANDING SERVICE



Power



### Highest Power-to-Weight ratio of any power tool

All RAD<sup>®</sup> torque guns are designed to deliver the highest power-to-weight ratio of any pneumatic tool on the market today, saving you time and money in maintenance or production costs. The extremely high torque and constant rotation make our tools ideal for virtually any bolting application you will encounter. Equal power in both forward and reverse allows more diversity for tough maintenance jobs.



Accuracy



### Accuracy +/-5%, repeatability 2%\*

Every RAD<sup>®</sup> air torque wrench is individually calibrated and traceable to NIST standards to help ensure joint integrity. Our tools are many times more accurate than impact wrenches and in many cases can be more precise than click type manual torque wrenches, which are often over pulled by operators.  
\* With correct air supply



Safety



### 88 times less vibration than Impact wrenches...Operates at only 85 db

RAD<sup>®</sup> torque guns are one of the safest power tools on the market today. Our exclusive low profile reaction arm takes virtually all the operational load off the operator, reducing injuries and greatly reducing operating costs. Don't wait for a time loss injury or legislation to force change in your environment, RAD<sup>®</sup> guns set the standard in bolting safety.



[www.radtorque.com](http://www.radtorque.com)  
1-800-983-0044

COMPANY PROFILE

LIGHTER • FASTER • STRONGER

Believe It!



MINING  
OIL & GAS  
AEROSPACE  
PETROCHEMICAL  
MANUFACTURING

