

CONTENTS

CONTENTS.....	1
IMPORTANT SAFETY NOTICE.....	3
1.0 General Information	4
1.1 System Component Description	4
1.2 Specifications	4
2.0 Power Requirements.....	6
2.1 AC Mains Power	6
2.2 Earth Grounding Safety.....	6
2.3 Ground Fault Current Interrupt (GFCI)	7
2.4 Extension Cords.....	7
2.5 Power Cycling.....	7
3.0 Tool System Assembly	8
3.1 Tool Handle Description	8
3.2 Controller Description	9
3.3 Assembling the Tool and Connecting Power	9
4.0 Touch Screen Interface.....	11
4.1 Main Screen	11
4.2 User Access Levels.....	12
4.3 Tool Locked Functions	15
4.5 Intermediate Level Functions.....	24
4.6 Advanced Level Operations	30
5.0 GENERAL OPERATING INSTRUCTIONS	35
4.1 Safety Information	36
5.2 Torque Only Operation	37
5.3 Angle Only Operation	38

5.4 Torque and Angle Operation.....	39
5.5 Reviewing the Last Result	40
6.0 DATA LOG PC OPERATIONS	41
5.1 Software Installation & PC Requirements	41
6.2 Connecting PC and E-RAD.....	42
6.3 Setting the Clock.....	44
6.4 Downloading all Data Logs	45
6.5 Deleting (Closing) Data Logs	46
6.6 Exporting Data.....	47
7.0 CONTACT US.....	48

IMPORTANT SAFETY NOTICE

WARNING!

Do not operate the tool before reading this user manual. If breakdown, malfunction, or damage occurs, DO NOT attempt to repair. Contact New World Technologies Inc. or your local distributor immediately.

CAUTION!

Only persons trained and qualified should attempt the installation, operation and diagnosis of this equipment. This equipment may be connected to high voltage AC mains power and other external equipment that has rotating parts controlled by this equipment. Improper training and use can cause serious or fatal injury.

Intended use of this equipment is for commercial and industrial bolting applications. The tool should only be used if the equipment is protected from exposure to excessive or corrosive moisture, dust, dirt, ambient temperatures, vibration and impacts. The operating specifications are in Section 1 of this manual. The installation, connection, and use require skilled operation. Disassembly or repair must not be attempted. If the equipments fails to operate correctly, contact the distributor or manufacturer for instructions.

1.0 General Information

1.1 System Component Description

Each E-RAD Tool System is shipped complete with the following:

- E-RAD Touch Controller (Weatherproof or Steel Case)
- E-RAD Hand Held Torque Tool
- Power and Control Cables (attached to hand held tool)
- Standard Reaction Arm (with snap ring)
- Serial Communication Cable (calibration/data retrieval)
- Calibration and Data Retrieval Software CD
- Calibration Certificate
- User Manual

1.2 Specifications

Please ensure that all Electrical Specifications are used when utilizing the E-RAD Touch.

1.21 Torque Ranges:

100 – 700 Ft.lbs	Or	135 – 950 Nm
200 – 1200 Ft.lbs	Or	270 – 1600 Nm
250 – 2000 Ft.lbs	Or	340 – 2700 Nm
250 – 2500 Ft.lbs	Or	340 – 3400 Nm
500 – 3000 Ft.lbs	Or	675 – 4050 Nm
800 – 4000 Ft.lbs	Or	1080 – 5400 Nm
1500 – 6000 Ft.lbs	Or	2030 – 8100 Nm

1.22 Electrical Specifications:

	Units	120V Model	230V Model
Nominal Input Voltage	VAC	115	230
Minimum Input Voltage	VAC	97	184
Maximum Input Voltage	VAC	125	253
Nominal Tool Voltage	VDC	160	320
Minimum Input Voltage	VDC	135	306
Maximum Input Voltage	VDC	176	350
Nominal Input Current	Arms	7.5	7.5
Nominal Tool Phase Current	Arms	7.5	7.5
Peak Tool Phase Current	Arms	15	15

1.22 Environmental Specifications:

	Units	All Models	
Ambient Operating Temperature Range		degC	degF
Minimum		-20	-4
Maximum		40	104
Storage Temperature Range		-25 to 70	-13 to 158
Humidity	%	10 to 90 non-condensing	
Shock		10G according to DIN IEC 68-2-6/29	
Vibration		1G, 10-50Hz according to DIN IEC 68-2-6/69	

Note: The E-RAD can be supported below -20deg C (-4 degF) on request to manufacturer.

2.0 Power Requirements

This section provides instructions for connecting the AC Power Supply and the E-RAD Tool Handle to the E-RAD Touch Controller.

The installer of this equipment is responsible for complying with Federal, NEC (National Electrical Code) or equivalent, and local guidelines and application codes that govern protection, earthing/grounding, disconnects and other current protection for electrical equipment for use in indoor or outdoor applications.

2.1 AC Mains Power

WARNING!

Electrical Shock can cause serious or fatal injury. Do not touch any power device, electrical connection, or remove the E-RAD cover panel before first ensuring the AC mains power has been disconnected and no high voltage is present.

WARNING!

Ensure all AC mains wiring to the E-RAD power cord comply with the National Electrical Code and all regional and local codes. Improper wiring may result in unsafe conditions to equipment and personnel.

WARNING!

Ensure the correct AC mains voltage prior to connecting the AC mains power. Severe equipment damage will occur if the E-RAD is connected to the incorrect mains voltage.

The E-RAD Controller requires model specific single phase, 120VAC or 230VAC.

The single phase line must be electrically symmetrical with respect to earth ground. The branch circuit must be a dedicated 15A to ensure proper tool operation, and to avoid circuit loading, nuisance trips.

The E-RAD Controller is internally fused for self protection. Please contact New World Technologies Inc. for assistance if a blown fuse is suspected.

2.2 Earth Grounding Safety

The E-RAD is assembled with a dedicated earth ground connection to the tool handle and controller via the AC mains power connection.

It is the user's responsibility to adhere and follow, at minimum an Assured Grounding Program, in addition to any and all National and Local Electrical Codes.

WARNING!

Earth grounding is the primary electrical shock protection, and is mandatory!

WARNING!

Ensure the E-RAD Controller and Tool Handle is properly Earth Grounded before turning on the power switch. **DO NOT** turn on the power to the tool or operate the tool without verifying Earth Ground. Electrical Shock can cause serious or fatal injury.

2.3 Ground Fault Current Interrupt (GFCI)

GFCI's are secondary protection devices, and protect against electric shock in case of a ground wiring fault.

Standard Class A GFCI typically has a leakage current trip range of 4mA-6mA. The E-RAD uses precision servo technology which inherently has higher leakage current than the Class A GFI rating.

The E-RAD, when powered on, may have up to 4mA leakage current and when loaded, may have up to 19mA leakage current. As a result of the leakage current the E-RAD may cause nuisance tripping of Class A GFCI especially when loaded.

National and Local Electrical Codes may have an exclusion of GFCI requirements where an appliance cannot be used with GFCI, if an Assured Grounding Program (AGP) is used and maintained. Please check National and Local Electrical Code for compliance.

In addition to an Assured Grounding Program for personal protection, Class B GFCI, with a leakage current trip rating of 20mA or greater may be used for equipment protection on the E-RAD.

2.4 Extension Cords

Extension cord quality and condition is important to ensure personal safety and E-RAD performance. Please check National and Local Electrical Code for compliance.

For extension cords under 30ft, 12AWG is recommended. For extension cords over 30ft, 10AWG is recommended.

Generally 100ft is the maximum recommended length for any extension cord, although some installations demand longer cords. Longer extension cords will reduce the voltage and speed of the E-RAD Tool, and may cause nuisance trips at higher torque demand.

2.5 Power Cycling

If AC power has been shut off from the E-RAD, it should not be reapplied for at least **one minute**. This allows the input surge protection to perform properly. Power cycling more frequently can cause nuisance trips and reduce the life-time of the electronics.

3.0 Tool System Assembly

The E-RAD Tool system consists of the Controller and Tool Handle. The controller and handle are calibrated as a system and are identified by the same serial number. It is important to always ensure the serial numbers match; otherwise the tool will perform torque or angle operations inaccurately. This can cause equipment and joint failure due to under-torque or over-torque.

3.1 Tool Handle Description

The E-RAD pistol grip torque wrench is trigger activated with a bi-directional forward/reverse switch. On each side of the tool housing is a three LED Status Display which notifies when the tool is ready for use, the bolting cycle has passed or if the bolting cycle has failed.

1. Forward/Reverse Switch – controls direction of rotation.
2. On/Off Trigger Switch – hand tool activation.
3. **System Ready** – Blue LED will illuminate when the tool is ready for use.
4. **Fail** – Red LED will illuminate when the tool fails to complete the torque cycle.
5. **Pass** – Green LED will illuminate when the tool completes torque operation.

Note: In Angle mode operation, all three LEDs will be illuminated.



3.2 Controller Description

The E-RAD Controller has a touch screen interface for ease of bolting operation and status, as well as advance configuration and data logging. The AC Power and Tool Handle Connections are located on the right side of the controller housing. Details are shown below in (Fig. 3.2.1) :

1. Military style connectors for the E-RAD Pistol Grip Torque Tool.
2. Main Input Power Connector (120V AC or 230V AC)



Figure 3.2.1: Controller Assembly Connections

3.3 Assembling the Tool and Connecting Power

WARNING!

Electrical shock can cause serious or fatal injury. Ensure E-RAD Controller and Tool Handle is properly Earth Grounded before turning on the power switch. **DO NOT** turn on power to the Tool or operate the Tool without verifying the Earth Ground.

WARNING!

DO NOT disconnect the electrical connectors while the E-RAD power is ON. Damage to the tool or controller will occur.

1. Refer to **Section 2.0 - Power Requirements** in this manual and ensure compliance before connecting the tool or AC power to the Controller.
2. Ensure the Tool and Controller Serial Numbers are matched.
3. Connect the Tool Handle Motor and Feedback cables to the Controller.
4. Ensure the AC Mains Supply is Earth Grounded.
5. Ensure the AC Power Cord is in good condition, including there are no cuts or breaks in the cord insulating jacket, and the plug pins and earth ground pin are present and in good condition.

6. Ensure the E-RAD Power Switch is OFF and power light is off.
7. Connect the E-RAD AC Power Cord to the Controller.
8. Connect the E-RAD AC Power Cord to the AC Mains Supply.
9. Check that the E-RAD Controller and Tool Handle is properly Earth Grounded.
10. The E-RAD is ready for power on.

4.0 Touch Screen Interface

The E-RAD Touch provides simple user interface for bolting operations with full tool configuration options and advanced data log entry, recording, and retrieval.

For bolting management, and ease of use, basic user access can be locked or unlocked, and intermediate and advanced configuration and calibration features are also password protected.

CAUTION!

LCD Touch Displays are susceptible to mechanical shock and any force exerted on the module may result in damage.

CAUTION!

Moisture and water can damage the display when powered ON. Gently wipe off any moisture or let the display dry before usage.

CAUTION!

Dirt from fingerprint oil can easily stain the surface of the display. Gently wipe off any stains with a soft lint-free cloth.

CAUTION!

The performance of the display will degrade under high temperature and humidity. Avoid such conditions when storing.

4.1 Main Screen

The Main Screen is used as the central control point on the E-RAD Touch. Here the operator can access: Menu Options, select Presets, change Set Torque and Set Angle, and access Data Logs. See [Fig 4.1.1](#) for a visual description of the Touch Main Screen.



Figure 4.1.1: Touch Main Screen

4.2 User Access Levels

For bolting operation the tool will operate in locked or unlocked modes. The unlocked mode provides user password access to additional functions. Each of the unlocked levels requires a separate password. Refer to the Table 4 below for information which describes function availability per use level.

	Locked	Password Unlocked Access		
		Basic	Intermediate	Advanced
Select Preset	Yes	Yes	Yes	Yes
Data Log Setup	Yes	Yes	Yes	Yes
Data Log View	Yes	Yes	Yes	Yes
Data Log Print	Yes	Yes	Yes	Yes
Modify Preset	No	Yes	Yes	Yes
Set Any Torque	No	Yes	Yes	Yes
Set Any Angle	No	Yes	Yes	Yes
Change Torque Units	No	No	Yes	Yes
Enable/Disable Angle Mode	No	No	Yes	Yes
Enable/Disable Angle Lock Mode	No	No	Yes	Yes
Enable/Disable Reverse Target Torque	No	No	Yes	Yes
Point Calibration	No	No	Yes	Yes
View Tool Statistics	No	No	Yes	Yes
Clear Maintenance Statistics	No	No	Yes	Yes
Tool Calibration	No	No	No	Yes

Table 4: User Access Levels

The E-RAD Touch is shipped from factory in the Basic Unlocked Level. After configuration, it is recommended that the tool be locked for normal bolting operations to avoid inadvertent changes to tool settings and calibration.

Please refer to the appropriate manual section for further details on the individual function usage.

4.21 Unlocking the Tool

1. To unlock the tool press the **"Menu"** button on the main screen.
2. Choose the **"Unlock"** option from the menu (Fig 4.2.1).
3. A numeric keypad will be displayed in which you can enter the password for the desired level (Fig 4.2.2). Refer to the appropriate user level section for further information on the functions.
4. Press **"ENT"** to confirm the password or **"CLR"** to undo any changes
5. If the password is invalid you will see an **"INCORRECT"** message displayed on the screen otherwise the tool is now unlocked (Fig 4.2.3).



Figure 4.2.1



Figure 4.2.2



Figure 4.2.3

4.22 Locking the Tool

1. To lock the tool, press the **Menu** button on the main screen.
2. Choose the **Lock** option from the menu (Figure 4.2.4).
3. A numeric keypad will be displayed in which you can enter the password: 37232 (Fig 4.2.5).
4. Press **Ent** to confirm the password or **Clr** to undo any changes.
5. If the password is invalid you will see an "Incorrect" message displayed on the screen, otherwise the tool is now locked (Fig 4.2.6).



Figure 4.2.4



Figure 4.2.5



Figure 4.2.6

4.3 Tool Locked Functions

This Section will explain how to perform some of the features the E-RAD has while in Locked mode. Please refer to Table3 in Section 4.2 "User Access Levels" for more information on the locked mode options.

4.3.1 Tool Locked Access

Bolting operations are enabled in locked and any unlocked user level. If the tool is locked, the user has access only to preset selections, tool info, and basic data log operations.

Refer to **Section 4.2.1 - Unlocking the Tool** and **Section 4.2.2 - Locking the Tool** for more information.

4.3.2 Selecting a Preset

Presets allow the operator to access pre-defined torque and angle values quickly and efficiently. This operation can be used in tool locked or unlocked mode.

To select a preset,

1. Press the "**Presets**" button on the main screen.
2. Select the desired preset by pressing the preselect number button (Fig 4.3.1).



Figure 4.3.1

4.3.3 Viewing Tool Information

This screen can be viewed in tool locked or unlocked mode, and displays the following:

- E-RAD Serial number
- Controller Serial number
- Factory Calibration Date
- Customer Calibration Date (If Factory Calibration Modified)
- Next Calibration Date (Based on 365 days after factory calibration date)

To view basic tool information:

1. Press the **"Menu"** button on the main screen.
2. Select the **"Tool Info"** button on the main menu screen. (Fig 4.3.2).



Figure 4.3.2

4.3.4 Changing the Log File

ATTENTION!

On E-RAD power-up, the data log file name will be set to "DEFAULT.LOG". This is to protect previous data log integrity. Therefore, if the E-RAD is powered off, or loses power during a desired data set, the desired data log file name must be entered on power-up.

Changing the log file allows the operator to create/select a data log file name to record or view. This operation can be used in tool locked or unlocked mode.

To create a new file name or select an existing one:

1. Press the "Folder" icon on the main screen.
2. Choose "Select Log" from the data log menu (Fig 4.3.3).
3. Enter the desired alpha-numeric file name using the keypad (Fig 4.3.4).



Figure 4.3.3



Figure 4.3.4

4. Press each key numerous times to cycle through the available characters of that key. If you pause for more than 1 second, the cursor will move to the next position.
5. Press "ENT" to accept the file name or "CLR" to undo.
6. If the log file name already exists, you will be prompted to continue the existing log, or choose another file name (Fig 4.3.5).

7. Once selected, the new file name is displayed on the main screen (Fig 4.3.6).

Note: The 1 key includes the characters '-', '_', and '.'
To select the default log, you can choose "Select Default" from the "Data Log" menu.



Figure 4.3.5



Figure 4.3.6

4.3.5 Viewing the Log File

Viewing the Log File will allow the operator to view the currently selected log file. Refer to Section 4.3.4, to select a specific data log.

To view the current log file,

1. Press the **"Folder"** icon on the main screen.
2. Choose **"View Log"** from the data log menu (Fig 4.3.7).
3. Cycle between individual bolt cycle logs using the left and right arrow keys (Fig 4.3.8).
4. Press **Exit**, to return to the main screen.

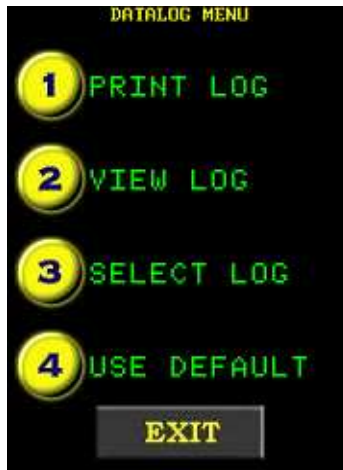


Figure 4.3.7



Figure 4.3.8

Note: Text will be in green if the cycle was a **"Pass"** and red if the cycle was a **"Fail"**. If the operator prematurely released the trigger during a torque cycle, the cycle will be recorded as a fail.

4.3.6 Printing the Log File

Print the Log File allows the operator to print the selected log file to a serial printer, which is optionally purchased. The recommended printer is Seiko DPU-414.

To print the current log file:

1. Connect the serial printer to the communications port of the tool using the provided
2. Press the "Folder" icon on the main screen.
3. Choose "Print Log" from the data log menu (Fig 4.3.9).
4. Press "ENT" from the prompt window to start printing, or "CLR" to cancel (Fig 4.3.10).
5. Once printing has started, do not disconnect the printer. To cancel printing at any time press the "Exit" Button.
6. Once printing is complete, press "Exit" button to return to the main screen.



Figure 4.3.9

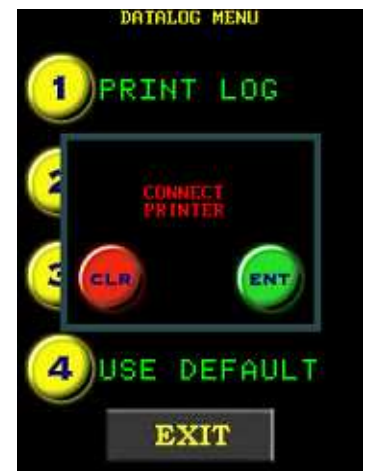


Figure 4.3.10

4.3.6 Basic Level Functions

This section will explain how to perform some of the features the E-RAD has while in Basic Level. Please refer to **Table 3** in **Section 4.2 - User Access Levels** for more information on the Basic Level options.

4.4.1 Basic Level Access

To access the “**Basic**” level functions, enter password “**37232**”.

Generally after operations are completed, lock the tool to ensure the settings are not inadvertently modified. Refer to **Section 4.2.1 - Unlocking the Tool** and **Section 4.2.2 - Locking the Tool** for more information.

4.4.2. Changing the Set Torque

Changing the Set Torque allows the operator to define the peak torque shut-off to any value within the tool range. The torque units are displayed above the torque value on the main screen, and cannot be changed from the basic level access.

To change the Set torque:

1. Press the “**Set Torque**” button on the main screen.
2. Enter the new target torque via the keypad. (Fig 4.4.1).
3. Press “**ENT**” to confirm the new torque, or “**CLR**” to cancel.
4. Confirm the new Set Torque is displayed on the main screen (Fig 4.4.2).



Figure 4.4.1



Figure 4.4.2

Note: The angle will automatically be adjusted if it is outside the maximum or minimum limits of the tool.

4.4.3 Changing the Set Angle

Changing the Set Angle allows the operator to define the position shut-off to any value within 0-360 degrees.

The angle mode is enabled from the Intermediate or Advanced Level and cannot be enable/disable from the basic level access.

If the angle is disabled, the target angle button and value will not be displayed.

To change the target angle:

1. Press the "Set Angle" button on the main screen.
2. Enter the new Set Angle via the keypad (Fig 4.4.3).
3. Press "ENT" to confirm the new angle or "CLR" to cancel.
4. Confirm the new Set Angle is displayed on the main screen (Fig 4.4.4).



Figure 4.4.3



Figure 4.4.4

Note: The angle will automatically be adjusted if it is outside the maximum or minimum limits of the tool. A minimum angle of 10 degrees is required and a maximum of 360 degrees.

4.4.4 Saving a Preset

Presets provide quick selection of up to eight pre-defined target sets of torque and angle (if enabled). These presets can only be modified when the tool is unlocked from any access level. In this manner, the presets can be configured and the tool locked to prevent inadvertent changes during normal operation.

To modify and save a Preset:

1. Modify the target torque as per **Section 4.4.2**, and/or the target angle as per **Section 4.4.3**.
2. Press the "**Presets**" menu button on the main screen.
3. Choose "**Save Preset**" from the preset menu (Fig 4.4.5).
4. Select the desire Preset Number, via the keypad, to save the current target torque/angle values to (Fig 4.4.6).

Note: Saving these values overwrites any existing presets stores in the location.

5. Press "**ENT**" to confirm the preset location or "**CLR**" to cancel.



Figure 4.4.5



Figure 4.4.6

4.5 Intermediate Level Functions

This section will explain how to use the Intermediate functions on the E-RAD. Please refer to **Table 3** in **Section 4.2 - User Access Levels** for an overview of the Intermediate Level options.

4.5.1 Intermediate Level Access

To access the following functions you must have access to the **Intermediate** level password and unlock the tool with that password. Generally, after operations are completed, lock the tool to ensure the settings are protected and cannot be inadvertently modified.

Please contact New World Technologies Inc. for the password.

Refer to **Section 4.2.1 - Unlocking the Tool** and **Section 4.2.2 - Locking the Tool** for more information.

4.5.2 Changing the Torque Units

The torque units can be selected from ft-lbs, Nm, or Kgfm. When the units are changed the Set Torque value, presets torque values, and calibration values are automatically adjusted to the selected units.

To change the torque units:

1. Press the **"Menu"** button on the main screen.
2. Select **"Change Units"** from the second page of the menu (Fig 4.5.1).
3. Select the desired units (Fig 4.5.2).



Figure 4.5.1



Figure 4.5.2

4.5.3 Enabling/Disabling Angle Display Mode

The Angle Display Mode can be enabled or disabled (if factory enabled) by the user. When enabled the target angle is displayed and accessible to the operator.

WARNING!

This feature should only be used by an operator who is fully trained on this feature. Improper use can cause serious harm to the operator and the equipment. Please contact NWT for more information.

To change the angle mode:

1. Press the **"Menu"** button on the main screen
2. Select the **"User Config"** from the main menu (Fig 4.5.3).
3. Select **"Angle On"** or **"Angle Off"**. This feature is enabled if the **Angle Mode Off** selection is displayed (Fig 4.5.4).



Figure 4.5.3



Figure 4.5.4

4.5.4 Enabling/Disabling Angle Lock

The Angle Lock feature allows the operator to release the trigger during an angle move, and the tool will continue to operate and complete the angle move unless the tool is placed into reverse. This may be desired to alleviate operator fatigue during long angle moves.

To change the angle lock:

1. Press the **"Menu"** button on the main screen.
2. Select the **"User Config"** from the main menu (Fig 4.5.5).
3. Select **"Angle Lock On"** or **"Angle Lock Off"**. This feature is enabled if the **Angle Lock Off** selection is displayed (Fig 4.5.6).



Figure 4.5.5



Figure 4.5.6

4.5.5 Enabling/Disabling Target Torque

The reverse target torque feature allows the tool to target torque in reverse, as well as is in forward mode.

To change the reverse target torque mode:

1. Press the **"Menu"** button on the main screen.
2. Select the **"User Config"** from the main menu (Fig 4.5.7).
3. Select **"Rev. Trgt On"** or **"Rev. Trgt Off"**. This feature is enabled if the Rev. Trgt Off selection is displayed (Fig 4.5.8.).



Figure 4.5.7



Figure 4.5.8

4.5.6 Viewing Tool Statistics

The Tool Statistics displays the tool Life Cycle Counters, Maintenance Counters, and Error Logs.

The life cycle counters cannot be cleared and are for factory use.

The maintenance counters can be cleared from the Intermediate or Advanced Access levels only, and are for use by the user.

To view the tool statistics:

1. Press the **"Menu"** button on the main screen.
2. Select **"Tool Stats"** from the menu (Fig 4.5.9).
3. Select **"Life Stats"** from the menu, to view the life cycle counters (Fig 4.5.10).
4. Select **"Main Stats"** from the menu to view the counters since last clear (Fig 4.5.11).



Figure 4.5.9



Figure 4.5.10

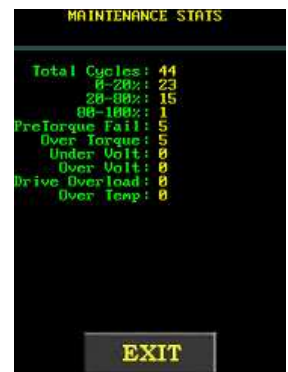


Figure 4.5.11

4.5.7 Clearing Maintenance Statistics

The maintenance statistics can be cleared from the Intermediate or Advanced Access levels only, and are for use by the user as desired.

To clear the maintenance statistics:

1. Press the **"Menu"** button on the main screen.
2. Select **"Tool Stats"** from the second page of the menu (Fig 4.5.12).
3. Select **"Clear Maint"** from the menu (Fig 4.5.13).
4. Press **"CONFIRM CLR"** to confirm or **"EXIT"** to cancel (Fig 4.5.14).



Figure 4.5.12



Figure 4.5.13



Figure 4.4.14

4.6 Advanced Level Operations

This section will explain how to use the advanced functions on the E-RAD. Please refer to **Table 3** in **Section 4.2 “User Access Levels”** for an overview of the Advanced Level options.

4.6.1 Advanced Level Access

To access the following functions the user must have access to the **“Advanced”** level password, and unlock the tool with that password. Generally, after operations are completed, lock the tool to ensure the settings are protected and cannot be inadvertently modified. Please contact New World Technologies Inc. for the password.

Refer to **Section 4.2.1 - Unlocking the Tool** and **Section 4.2.2 - Locking the Tool** for more information.

4.6.2 Enabling/Disabling Point Calibration

Point Calibration is used to quickly adjust the tool final torque for a single Set Torque only. This is generally used for field application torque verification and adjustment. The point calibration adjustment is only valid when Point Calibration is enabled, and only for the single Set Torque. The point calibration does not overwrite the tool calibration values.

To enable point calibration:

1. Press the **“Menu”** button on the main screen.
2. Select the **“User Config”** from the main menu (Fig 4.6.1).
3. Select **“Point Cal”** to enable Point Calibration (Fig 4.6.2) or **“Exit Point Cal”** to disable Point Calibration from the menu.
4. If Point Calibration is enabled a Target Icon will be shown on the top left corner of the main menu display screen (Fig 4.6.3).
5. Perform target torque calibration refer to **Section 4.6.3 - Configuring Point Calibration**.



Figure 4.6.1



Figure 4.6.2



Figure 4.6.3

4.6.3 Configuring Point Calibration

Point Calibration is used to quickly adjust the tool calibration for a single Set Torque only, to match the final torque shut-off to a secondary verification system. The user will need a calibration stand to perform this procedure.

To configure point calibration:

1. Ensure Point Calibration is enabled. Refer to **Section 4.6.2 - Enabling/ Disabling Point Calibration** for more information.
2. Mount the tool system to a calibration system and ensure the calibration transducer display is configured in the same torque units as the tool.
3. Press the target torque value button from the main screen.
4. Enter the desired target torque via the keypad (Fig 4.6.4).
5. At the prompt **"Do Torque Cycle 1"** (Fig 4.6.5), operate the tool to complete the first torque cycle.
6. Enter the calibration transducer measured torque result via keypad.
7. At the prompt **"Do Torque Cycle 2"** (Fig 4.6.6), operate the tool to complete the second torque cycle.
8. Enter the calibration transducer measured torque result via the keypad.
9. The main screen will be displayed and the point calibration adjustment will be saved.

The tool torque will be adjusted by the point calibration, for the specific target torque, until a new target is entered, or the point calibration is disabled.

10. Lock the tool to ensure the target torque is not inadvertently changed for the point calibration modified. Refer to **Section 4.2.2 "Locking the Tool"**.
11. The tool can now be used for the intended application.



Figure 4.6.4



Figure 4.6.5



Figure 4.6.6

4.6.4 Tool Calibration

The tool calibration provides access to the calibration values over the full range of the tool and should only be modified by a qualified Calibration Technician.

WARNING!

Calibration must only be done by a qualified Calibration Technician. Improper use of this function and calibration can lead to tool and/or joint failure.

The calibration values represent the relationship between tool output power and torque in standard engineering torque units. The torque units can be modified, refer to **Section 4.5.2 - Changing Torque Units** for more information.

When the calibration is modified by the user, the date is stored. When the calibration is modified by NWT or an authorized NWT Distributor, the factory calibration date, and recommended calibration due date is stored. Refer to **Section 4.5.6 - Viewing Tool Information** for more information.

To calibrate the tool:

1. Press the "Menu" button on the main screen.
2. Select the "User Config" from the main menu (Fig 4.6.7).
3. Select "Calibration" from the menu (Fig 4.6.8). A Confirmation Window will appear asking to confirm the Calibration or cancel the Calibration (Fig 4.6.9).
4. Do several torque cycles at the target 7% tool capacity, and average the results measured by a certified strain gauge transducer.



Figure 4.6.7



Figure 4.6.8



Figure 4.6.9

5. Press the "Cal Value" button (Fig 4.6.10) and enter the averaged measured torque via
6. Repeat steps 4 and 5 for each target tool capacity (in percentage), until the maximum

WARNING!

Do not calibrate at targets that result in exceeding the maximum rated tool torque. Sever tool damage will occur.

7. Press "Exit", and at the prompt press "CLR" to discard changes and "ENT" to save them. (Fig 4.6.11)

Note: Any calibration target can be reviewed and modified by using the left and right arrow buttons on the bottom of the calibration screen.



Figure 4.6.10



Figure 4.6.11

4.6.5 Factory Configuration

Factory Configuration is used to adjust factory settings including minimum torque, maximum torque, angle mode, and gearbox ratio. This setting can only be used under the direction of NWT representative and with NWT provided codes.

Please contact New World Technologies Inc. for more information.

5.0 GENERAL OPERATING INSTRUCTIONS

RAD TOOLS ARE SAFE AND RELIABLE. NOT FOLLOWING PRECAUTIONS AND INSTRUCTIONS OUTLINED HERE CAN RESULT IN INJURY TO YOU AND YOUR FELLOW WORKERS.

NEW WORLD TECHNOLOGIES INCORPORATED IS NOT RESPONSIBLE FOR ANY SUCH INJURY.

WARNING!

Do not operate the tool before reading this user manual. If breakdown, malfunction, or damage occurs, **DO NOT** attempt to repair. Contact New World Technologies Inc. or your local distributor immediately.

WARNING!

Ensure the E-RAD controller and tool handle are properly Earth Grounded before turning on the power switch. **DO NOT** apply power without verifying the Earth Ground. Electrical Shock can cause serious or fatal injury.

WARNING!

Electrical Shock can cause serious or fatal injury. **DO NOT** touch any power device, electrical connection or remove the EP-RAD cover panel before first ensuring the AC mains power has been disconnected and no high voltage is present.

CAUTION!

When using a power plug adapter, make sure the Earth Ground pin is present and connected in the adapter. New World Technologies Inc. does not recommend replacing the supplied power cord. In the event the power cord is replaced, make sure the new power cord has an Earth Ground pin.

4.1 Safety Information

E-RAD Tools use high voltage and current to tighten and loosen threaded fasteners. For your safety and that of others, WARNING LABELS and ATTENTION LABELS are prominently attached to the tool and reaction accessories.

E-RAD Tools have been designed with safety in mind however as with all tools you MUST observe all general workshop safety practices and specifically the following;

- Before using your new tool, get familiar with all its accessories and how they work.
- **ALWAYS** wear safety goggles when the tool is in operation.
- Make sure the reaction arm is in contact with a solid contact point before you operate the tool.
- Keep your body parts clear of the reaction arm and the contact point.
- **ALWAYS** check the AC Mains Supply, EP-RAD controller, EP-RAD Tool Handle are properly Earth Grounded. **DO NOT** apply power to the tool if you are unsure.
- **NEVER** exceed the maximum tool rated torque. Failure to do this voids warranty.
- Make sure the reaction arm snap ring is securely in place to hold the reaction arm or blank in place.
- **ALWAYS** support the tool in use. The tool must be supported at all times in order to prevent unexpected release in the event of fastener or component failure.

When the tool is in operation the Reaction Arm rotates in the opposite direction to the Output Square Drive and must be allowed to rest squarely against a solid object or surface adjacent to the bolt to be tightened (See Fig 4.1).

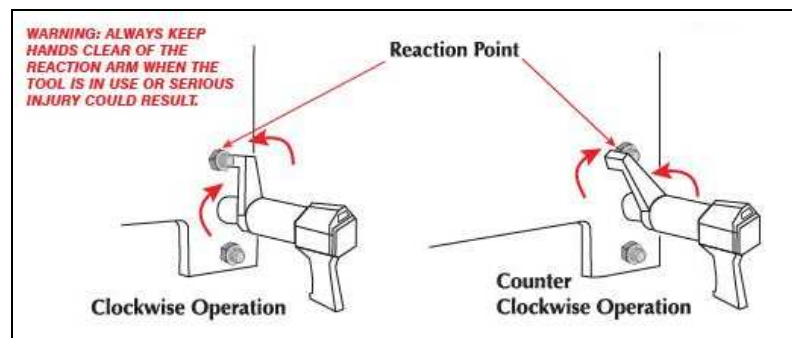


Figure 4.1 – Reaction Points

5.2 Torque Only Operation

This section describes the general operation of the E-RAD Torque Only mode.

WARNING!

Only qualified personnel with training in the safe operation of torque tooling and E-RAD tool system should operate the tool. Refer to **Section 4.1 - Safety Information** for more information.

To use Torque Only:

1. Adjust the Set Torque to the desired value using the Main screen (Fig 5.2.1). If the tool is locked refer to **Section 4.3.2 – Selecting a Preset**.
2. If Angle Mode is enabled, adjust the Set Angle to zero.
3. Place the tool on the joint system and switch the tool handle direction selector to forward.
4. Ensure the tool handle “**System Ready**” LED is illuminated.
5. Press and hold the tool handle trigger until the torque cycle has completed. To stop the tool at any time during the cycle, release the trigger.
6. When the torque cycle is completed or cancelled the measured peak torque will be displayed on the screen. Fig 5.2.2 shows the display screen when the bolt was successfully torque, Fig 5.2.3 when the bolt was unsuccessfully torqued. The result will remain displayed for ten seconds, until the tool is reversed or a new cycle started. Once the torque cycle is completed the tool will automatically reverse to release the tool from the joint. At this point the tool handle “**Pass**” LED will be illuminated.



Figure 5.2.1



Figure 5.2.2



Figure 5.2.3

Note: After the tool has finished moving forward, it will back off slightly to unload the reaction arm.

5.3 Angle Only Operation

This section describes the general operation of the E-RAD Angle Only mode.

WARNING!

Only qualified personnel with training in the safe operation of torque tooling and E-RAD tool system should operate the tool. Refer to **Section 4.1 "Safety Information"** for more information.

1. Set the Torque to '0' Ft.lb and the angle to the desired angle (Fig 5.3.1). If the tool is
2. If the tool is unlocked refer to **Section 4.4.2 "Changing the Set Torque"** and **Section 4.4.3 "Changing the Set Angle"** for more information on how to set the Torque and Angle to their desired values.
3. Ensure the tool handle "System Ready" LED is illuminated.
4. Hold the trigger down, the tool will begin the pretorque cycle, and the "Pass" or "Fail" will be indicated on completion of the pretorque. (Fig 5.3.2). Press and hold the trigger again to begin the angle cycle.

WARNING!

If the Angle Lock Feature is enabled, the trigger does not need to be held during the angle cycle. If the tool needs to be stopped for any reason switch tool direction to Reverse, which will cancel the cycle and stop the tool. Refer to **Section 4.5.3 "Enabling/Disabling Angle Display Mode"** for more information.

5. As the bolt is tightened the display will be updated with the current angle.
6. When the tool stops moving the result of the angle will be displayed on the screen. Figure 5.3.3 shows the display screen when the bolt was successfully torque in angle only operation. The result will remain displayed for 10 seconds, until the tool is reversed, or a new torque cycle starts.
7. Once "Pass" or "Fail" has been displayed the tool is ready to perform another torque cycle.



Figure 5.3.1



Figure 5.3.2



Figure 5.3.3

Note: After the tool has successfully finished the angle move, the tool will back off slightly to unload the reaction arm.

5.4 Torque and Angle Operation

This section describes the general operation of the E-RAD Angle and Angle mode.

WARNING!

Only qualified personnel with training in the safe operation of torque tooling and E-RAD tool system should operate the tool. Refer to **Section 4.1 "Safety Information"** for more information.

1. Adjust the Set Torque and Set Angle to the desired values using the Main screen (Fig 5.4.1). If the tool is locked, refer to **Section 4.3.2 "Selecting a Preset"**.

If the tool is unlocked refer to **Section 4.4.2 - Changing the Set Torque** and **Section 4.4.3 - Changing the Set Angle** for more information on how to set the Torque and Angle to their desired values.

2. Press and hold the trigger to do the pre-torque cycle. To stop the tool at any time during the pre-torque cycle, release the trigger. The "Pass" or "Fail" will be indicated on completion.
4. After the Pre-torque has been reached the tool will pause for a moment before continuing with the angle move. Press and hold the trigger again to begin the angle cycle.

WARNING!

If the Angle Lock Feature is enabled, the trigger does not need to be held during the angle cycle. If the tool needs to be stopped for any reason switch tool direction to Reverse, which will cancel the cycle and stop the tool. Refer to **Section 4.5.3 "Enabling/Disabling Angle Display Mode"** for more information.



Figure 5.4.1



Figure 5.4.2



Figure 5.4.3

5. As the bolt is tightened the display will be updated with the current angle.
6. When the tool stops moving the result of the angle will be displayed on the screen. **Figure 5.4.2** shows the display screen when the bolt was successfully torque in angle only operation. The result will remain displayed for 10 seconds, until the tool is reversed, or a new torque cycle starts.
7. Once "Pass" or "Fail" has been displayed the tool is ready to perform another torque cycle.

Note: After the tool has successfully completed the angle move, the tool will back off slightly to unload the reaction arm.

5.5 Reviewing the Last Result

Reviewing the last result allows the operator to view the last torque cycle that the E-RAD Touch performed. This operation can be used in tool locked or unlocked mode.

1. The result of the last bolt torqued is accessible by touching the "Last Result" text displayed above the set torque parameter (**Fig 5.5.1**).
2. Once touched, the last result is displayed for 10 seconds, until the tool is reversed, or a new torque cycle starts (**Fig 5.5.2**).



Figure 5.5.1



Figure 5.5.2

6.0 DATA LOG PC OPERATIONS

Using the E-RAD Data Logger the operator is able to connect an E-RAD Touch to a Personal Computer (PC or Laptop). Once in PC Mode the operator can perform the following actions:

- Setting the Clock on the E-RAD Touch
- Downloading all Data Logs off of the E-RAD Touch
- Deleting (close) Data Logs on the E-RAD Touch
- Export Data to another program

5.1 Software Installation & PC Requirements

Every E-RAD is shipped with software and hardware required for PC connection. The following equipment will be used in this section:

- E-RAD Software Package CD.
- E-RAD Serial Cable and Keyspan USB-Serial Adapter
- Keyspan USB-Serial Adapter CD

Please follow the *readme.txt* file on the CD for instructions on installing the E-RAD software on the PC. The CD includes the following Windows based software packages, compatible with Windows 7, Vista and XP operating systems;

- Workbench (**Warning! To Be Used only under NWT direction**)
- E-RAD Datalogger

Please follow the Keyspan CD instructions for installing the adapter drivers.

6.2 Connecting PC and E-RAD

To connect the E-RAD to the PC for data log access:

1. Ensure the E-RAD software and Keyspan software is installed.
2. Locate the E-RAD Serial Cable and Keyspan USB-Serial Adaptor (Fig 6.2.1).
3. Connect the E-RAD Serial Cable, RJ45 Connector to the Comms Port on the E-RAD Controller.
4. Connect the E-RAD Serial Cable, DB-9 Connector to the Keyspan USB-Serial Adapter.
5. Connect the Keyspan USB-Serial Adapter USB Connector to the PC.
6. On the E-RAD press the "Menu" button on the main screen.
7. Select "PC Interface" from the first page of the menu (Fig 6.2.2).
8. The "PC Mode" screen is now displayed. (Fig 6.2.3).



Figure 6.2.1



Figure 6.2.2

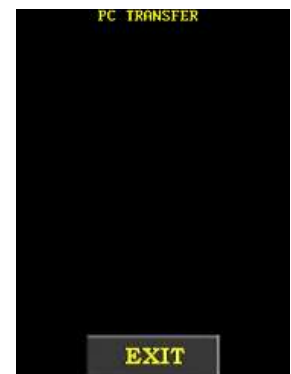


Figure 6.2.3

9. On the PC open the RAD Torque "E-RAD Data Logger" software. (Fig 6.2.4).
10. Select the correct Com Port for the connection (Fig 6.2.5) using the Options drop down menu.

Note: Please ensure you are using the correct Data Logger for the E-RAD Touch. Refer to Step 4 on the installation CD for further details.

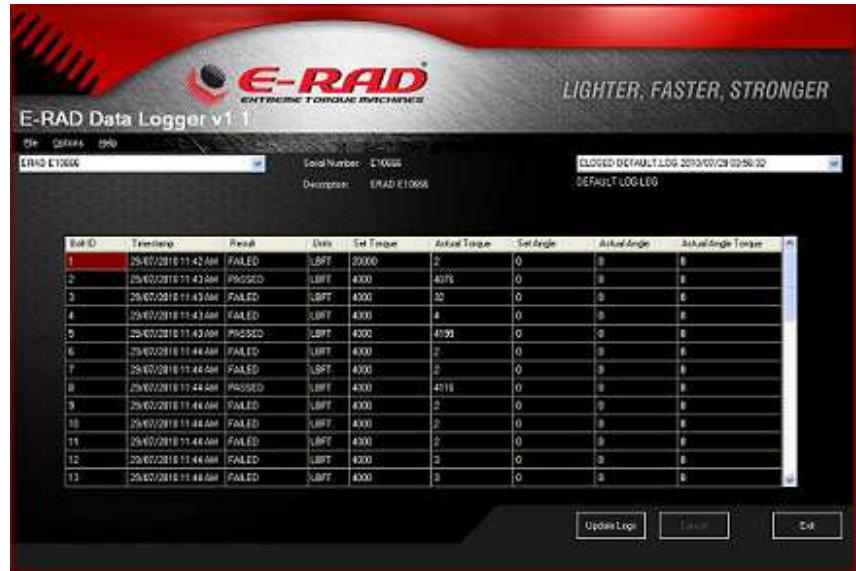


Figure 6.2.4

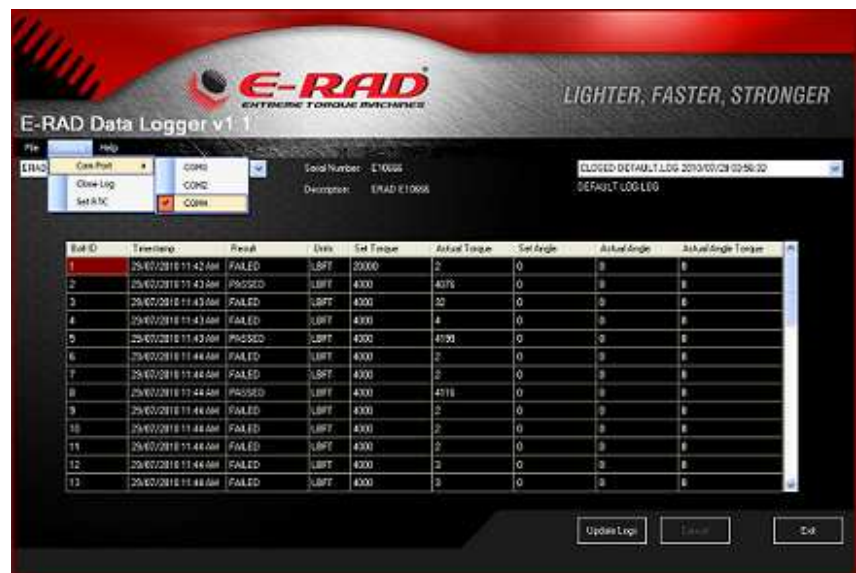


Figure 6.2.5

6.3 Setting the Clock

The E-RAD Data Logger is used to set the time on the E-RAD Touch Controller for data log timestamps.

1. To set the clock, first enter "**PC Mode**" see **Section 6.2 - Connecting PC and E-RAD** for more information.
2. On the PC open the RAD Torque "**E-RAD Data Logger**" software.
3. Under the options drop down menu located in the "**E-RAD Data Logger Software**" select "**Set RTC**" this will update the clock with the current time on the PC.

6.4 Downloading all Data Logs

Using the E-RAD Data Logging Software, the operator is able to download all Data logs from the E-RAD Touch to the PC.

1. To download all data logs, first enter "PC Mode" on the E-RAD see **Section 6.2 – Connecting PC and E-RAD** for more information.
2. On the PC open the RAD Torque "E-RAD Data Logger" software.
3. Press the "Update Logs" button on the mains screen (Fig 6.4.1).
4. The PC program will download all the logs from the tool.
5. Once the logs have been downloaded you may be prompted to add descriptions of the tool and the data logs. These descriptions can be anything to help identify the data.

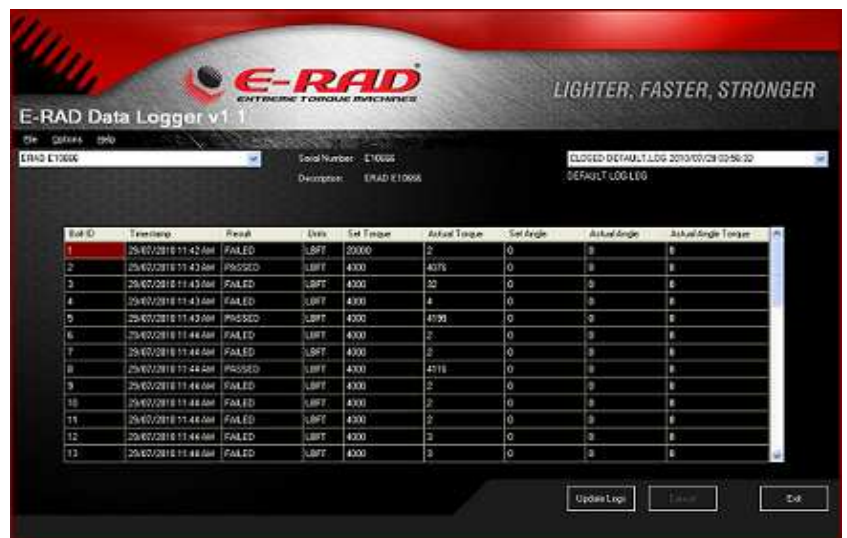


Figure 6.4.1

Note: All data is stored on a local database which may be queried to further manipulate the data.

6.5 Deleting (Closing) Data Logs

Closing Data Logs allows the operator to remove the logs from the E-RAD Touch. This information will remain on the PC. The title of the closed log will also be automatically modified to represent the date it was closed.

1. To delete a data log, first enter "PC Mode", see **Section 6.2 – Connecting PC and E-RAD** for more information.
2. On the PC open the RAD Torque "E-RAD Data Logger" software.
3. Select the log in you wish to close (Fig 6.5.1).

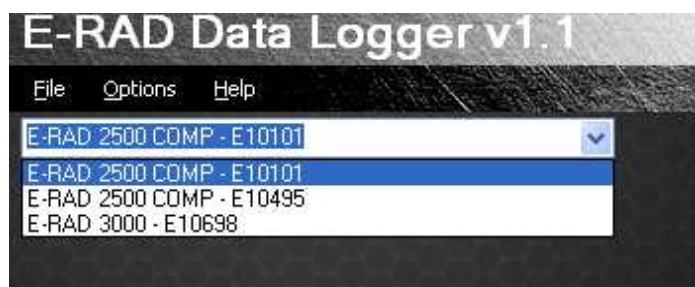


Figure 6.5.1

4. Under the options menu choose "Close Log" (Fig 6.5.2).



Figure 6.5.2

5. The selected log will be closed in the database and deleted from the tool.

6.6 Exporting Data

Using the Exporting Data feature the operator is able to transfer data to another program.

1. To transfer data to another program, first select the tool you wish to get the data from (Fig 6.6.1).

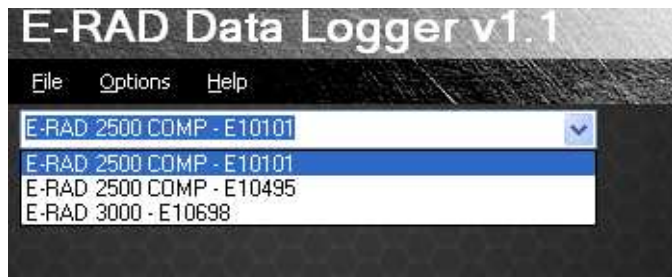


Figure 6.6.1

2. Select the log that you wish to retrieve the data from (Fig 6.6.2).



Figure 6.6.2

3. With the drag of the computer mouse select all the data you wish to export, press *Control + C* to copy it. Go to the other program such as Notepad, Word Pad, or Microsoft Word and press *Control + V* to paste the data into the other program. (Fig 6.6.3).



Figure 6.6.3

7.0 CONTACT US

New World Technologies Inc.

30580 Progressive Way
Abbotsford, BC V2T 6Z2
Canada



Toll Free: 1-800-983-0044

Fax: 604-852-0269

Email: wind@radtorque.com

Web: www.eradtorque.com

E-RAD Technical Support: 1-800-983-0044 (Ext. 227)

